

### Anti-GRIM19 antibody [6E1BH7] ab110240

KO 評価済

★★★★☆ 4 Abreviews 51 References 画像数 4

#### 製品の概要

製品名	Anti-GRIM19 antibody [6E1BH7]
製品の詳細	Mouse monoclonal [6E1BH7] to GRIM19
由来種	Mouse
アプリケーション	適用あり: WB, ICC/IF, Flow Cyt
種交差性	交差種: Mouse, Rat, Cow, Human
免疫原	Recombinant full length protein. This information is considered to be commercially sensitive.
ポジティブ・コントロール	WB: HeLa and Jurkat cell lysates; Human heart, Bovine heart, Rat heart, and Mouse heart isolated mitochondria. ICC/IF: Human fibroblasts. Flow Cyt: HeLa cells.
特記事項	<p>This antibody clone is manufactured by Abcam. If you require a custom buffer formulation or conjugation for your experiments, please contact <a href="mailto:orders@abcam.com">orders@abcam.com</a>.</p> <p>The Life Science industry has been in the grips of a reproducibility crisis for a number of years. Abcam is leading the way in addressing this with our range of recombinant monoclonal antibodies and knockout edited cell lines for gold-standard validation. Please check that this product meets your needs before purchasing.</p> <p>If you have any questions, special requirements or concerns, please send us an inquiry and/or contact our Support team ahead of purchase. Recommended alternatives for this product can be found below, along with publications, customer reviews and Q&amp;As</p> <p>Product was previously marketed under the MitoSciences sub-brand.</p>

#### 製品の特性

製品の状態	Liquid
保存方法	Shipped at 4°C. Store at +4°C. Do Not Freeze.
バッファー	<p>pH: 7.5</p> <p>Preservative: 0.02% Sodium azide</p> <p>Constituent: HEPES buffered saline</p>
特記事項 (精製)	ab110240 was produced in vitro using hybridomas grown in serum-free medium, and then purified by biochemical fractionation.

ポリ/モノ	モノクローナル
クローン名	6E1BH7
アイソタイプ	IgG2b
軽鎖の種類	kappa

## アプリケーション

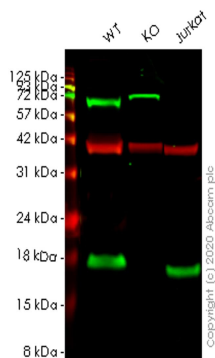
The Abpromise guarantee Abpromise保証は、次のテスト済みアプリケーションにおけるab110240の使用に適用されます  
 アプリケーションノートには、推奨の開始希釈率がありますが、適切な希釈率につきましてはご検討ください。

アプリケーション	Abreviews	特記事項
WB	★★★★★ (1)	Use a concentration of 1 µg/ml. Predicted molecular weight: 17 kDa.
ICC/IF	★★★★★ (1)	Use a concentration of 1 µg/ml.
Flow Cyt		Use a concentration of 1 µg/ml. <u>ab170192</u> - Mouse monoclonal IgG2b, is suitable for use as an isotype control with this antibody.

## ターゲット情報

機能	Accessory subunit of the mitochondrial membrane respiratory chain NADH dehydrogenase (Complex I), that is believed not to be involved in catalysis. Complex I functions in the transfer of electrons from NADH to the respiratory chain. The immediate electron acceptor for the enzyme is believed to be ubiquinone. Involved in the interferon/all-trans-retinoic acid (IFN/RA) induced cell death. This apoptotic activity is inhibited by interaction with viral IRF1. Prevents the transactivation of STAT3 target genes. May play a role in CARD15-mediated innate mucosal responses and serve to regulate intestinal epithelial cell responses to microbes.
組織特異性	Widely expressed, with highest expression in heart, skeletal muscle, liver, kidney and placenta. In intestinal mucosa, down-regulated in areas involved in Crohn disease and ulcerative colitis.
関連疾患	Defects in NDUFA13 may be a cause of susceptibility to Hurthle cell thyroid carcinoma (HCTC) [MIM:607464]. Hurthle cell thyroid carcinoma accounts for approximately 3% of all thyroid cancers. Although they are classified as variants of follicular neoplasms, they are more often multifocal and somewhat more aggressive and are less likely to take up iodine than are other follicular neoplasms.
配列類似性	Belongs to the complex I NDUFA13 subunit family.
発生段階	Expressed in numerous fetal tissues.
細胞内局在	Mitochondrion inner membrane. Nucleus. May be translocated into the nucleus upon IFN/RA treatment.

## 画像



Western blot - Anti-GRIM19 antibody [6E1BH7] (ab110240)

**All lanes** : Anti-GRIM19 antibody [6E1BH7] (ab110240) at 1/1000 dilution

**Lane 1** : Wild-type HeLa cell lysate

**Lane 2** : NDUFA13 knockout HeLa cell lysate

**Lane 3** : Jurkat cell lysate

Lysates/proteins at 20 µg per lane.

## Secondary

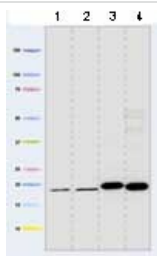
**All lanes** : Goat Anti-Rabbit IgG H&L (IRDye® 680RD) preadsorbed ([ab216777](#)) at 1/10000 dilution

**Predicted band size:** 17 kDa

**Observed band size:** 17 kDa

**Lanes 1-3:** Merged signal (red and green). Green - ab110240 observed at 17 kDa. Red - loading control [ab181602](#) observed at 36 kDa.

ab110240 GRIM19 antibody [6E1BH7] was shown to specifically react with GRIM19 in wild-type HeLa cells. Loss of signal was observed when knockout cell line [ab265863](#) (knockout cell lysate [ab257136](#)) was used. Wild-type and GRIM19 knockout samples were subjected to SDS-PAGE. ab110240 and Anti-GAPDH antibody[EPR16891] - Loading Control ([ab181602](#)) were incubated overnight at 4°C at 1 in 1000 dilution and 1 in 20000 dilution respectively. Blots were developed with Goat anti-Rabbit IgG H&L (IRDye® 680RD) preadsorbed ([ab216777](#)) and Goat anti-Mouse IgG H&L (IRDye® 800CW) preadsorbed ([ab216772](#)) secondary antibodies at 1 in 20000 dilution for 1 hour at room temperature before imaging.



Western blot - Anti-GRIM19 antibody [6E1BH7] (ab110240)

**All lanes :** Anti-GRIM19 antibody [6E1BH7] (ab110240) at 1 µg/ml

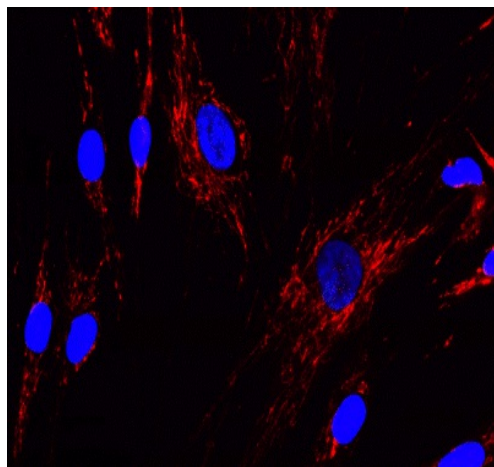
**Lane 1 :** Human heart mitochondria

**Lane 2 :** Bovine heart mitochondria

**Lane 3 :** Rat heart mitochondria

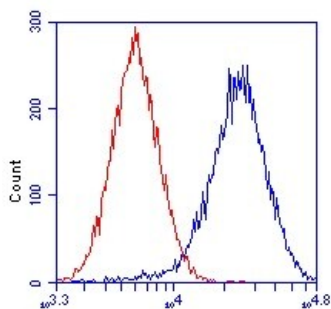
**Lane 4 :** Mouse heart mitochondria

**Predicted band size:** 17 kDa



Immunocytochemistry/ Immunofluorescence - Anti-GRIM19 antibody [6E1BH7] (ab110240)

Mitochondrial localization of GRIM19 visualized by immunocytochemistry using ab110240 at a concentration of 1 µg/mL. Cultured Human fibroblasts were fixed, permeabilized and then labeled with ab110240 followed by Alexa® 488 goat-anti-mouse IgG.



Flow Cytometry - Anti-GRIM19 antibody [6E1BH7] (ab110240)

HeLa cells were stained with 1 µg/mL ab110240 (blue) or an equal amount of an isotype control antibody (red) and analyzed by flow cytometry.

**Please note:** All products are "FOR RESEARCH USE ONLY. NOT FOR USE IN DIAGNOSTIC PROCEDURES"

### Our Abpromise to you: Quality guaranteed and expert technical support

- Replacement or refund for products not performing as stated on the datasheet
- Valid for 12 months from date of delivery
- Response to your inquiry within 24 hours

- We provide support in Chinese, English, French, German, Japanese and Spanish
- Extensive multi-media technical resources to help you
- We investigate all quality concerns to ensure our products perform to the highest standards

If the product does not perform as described on this datasheet, we will offer a refund or replacement. For full details of the Abpromise, please visit <https://www.abcam.co.jp/abpromise> or contact our technical team.

#### **Terms and conditions**

---

- Guarantee only valid for products bought direct from Abcam or one of our authorized distributors