

Anti-GRB2 antibody [Y237] ab32037

リコンビナント **RabMAb**

★★★★☆ **3 Abreviews** **22 References** 画像数 9

製品の概要

製品名	Anti-GRB2 antibody [Y237]
製品の詳細	Rabbit monoclonal [Y237] to GRB2
由来種	Rabbit
アプリケーション	適用あり: WB, Flow Cyt (Intra), IP, IHC-P, ICC/IF
種交差性	交差種: Mouse, Rat, Human
免疫原	Synthetic peptide within Human GRB2 aa 200 to the C-terminus (C terminal). The exact sequence is proprietary.
ポジティブ・コントロール	WB: HeLa, HL-60, Caco-2, HEK-293, PC-12 and NIH/3T3 cell lysates. IHC-P: Human ovarian carcinoma tissue. ICC/IF: HeLa cells. Flow Cyt (intra): HeLa cells.
特記事項	<p>This product is a recombinant monoclonal antibody, which offers several advantages including:</p> <ul style="list-style-type: none"> - High batch-to-batch consistency and reproducibility - Improved sensitivity and specificity - Long-term security of supply - Animal-free production <p>For more information see here.</p> <p>Our RabMAb[®] technology is a patented hybridoma-based technology for making rabbit monoclonal antibodies. For details on our patents, please refer to RabMAb[®] patents.</p>

製品の特性

製品の状態	Liquid
保存方法	Shipped at 4°C. Upon delivery aliquot and store at -20°C. Avoid freeze / thaw cycles.
バッファー	<p>pH: 7.20</p> <p>Preservative: 0.01% Sodium azide</p> <p>Constituents: 49% PBS, 50% Glycerol (glycerin, glycerine), 0.05% BSA</p>
精製度	Protein A purified
ポリ/モノ	モノクローナル
クローン名	Y237
アイソタイプ	IgG

アプリケーション

The Abpromise guarantee Abpromise保証は、次のテスト済みアプリケーションにおけるab32037の使用に適用されます

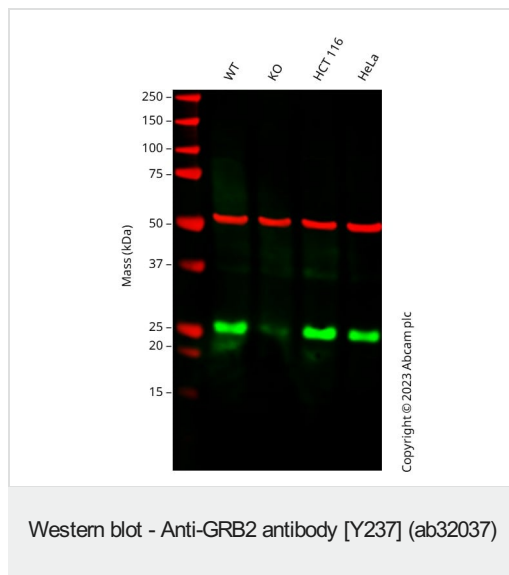
アプリケーションノートには、推奨の開始希釈率がありますが、適切な希釈率につきましてはご検討ください。

アプリケーション	Abreviews	特記事項
WB	★★★★★ (2)	1/5000 - 1/10000. Detects a band of approximately 25 kDa (predicted molecular weight: 25 kDa).
Flow Cyt (Intra)		1/20. ab172730 - Rabbit monoclonal IgG, is suitable for use as an isotype control with this antibody.
IP		Use at an assay dependent concentration.
IHC-P		1/100 - 1/250. Perform heat mediated antigen retrieval with citrate buffer pH 6 before commencing with IHC staining protocol.
ICC/IF	★★★★★ (1)	1/50 - 1/100.

ターゲット情報

機能	Adapter protein that provides a critical link between cell surface growth factor receptors and the Ras signaling pathway. Isoform GRB3-3 does not bind to phosphorylated epidermal growth factor receptor (EGFR) but inhibits EGF-induced transactivation of a RAS-responsive element. Isoform GRB3-3 acts as a dominant negative protein over GRB2 and by suppressing proliferative signals, may trigger active programmed cell death.
配列類似性	Belongs to the GRB2/sem-5/DRK family. Contains 1 SH2 domain. Contains 2 SH3 domains.
ドメイン	The SH3 domains mediate interaction with RALGPS1 and SHB.
細胞内局在	Golgi apparatus.

画像



All lanes : Anti-GRB2 antibody [Y237] (ab32037) at 1/5000 dilution

Lane 1 : Wild-type A431 cell lysate

Lane 2 : GRB2 knockout A431 cell lysate

Lane 3 : HCT 116 cell lysate

Lane 4 : HeLa cell lysate

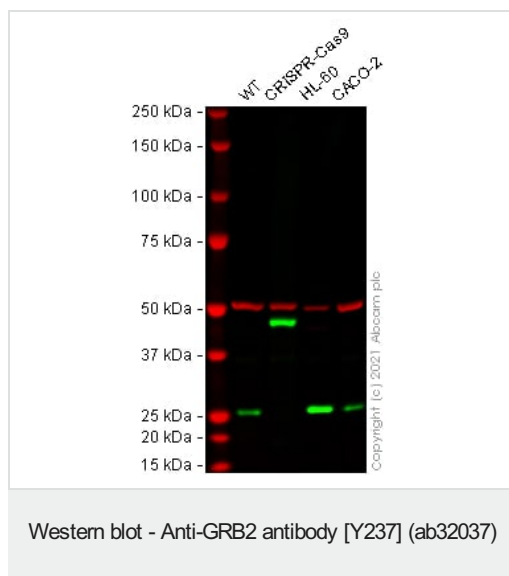
Lysates/proteins at 20 µg per lane.

Performed under reducing conditions.

Predicted band size: 25 kDa

Observed band size: 26 kDa

Anti-GRB2 antibody [Y237] (ab32037) staining at 1/5000 dilution, shown in green; Mouse anti-Alpha Tubulin [DM1A] ([ab7291](#)) loading control staining at 1/20000 dilution, shown in red. In Western blot, ab32037 was shown to bind specifically to GRB2. A band was observed at 26 kDa in wild-type A431 cell lysates with a reduction in signal observed at this size in GRB2 heterozygous knockout cell line. To generate this image, wild-type and GRB2 heterozygous knockout A431 cell lysates were analysed. First, samples were run on an SDS-PAGE gel then transferred onto a nitrocellulose membrane. Membranes were blocked in 3 % milk in TBS-0.1 % Tween[®] 20 (TBS-T) before incubation with primary antibodies overnight at 4 °C. Blots were washed four times in TBS-T, incubated with secondary antibodies for 1 h at room temperature, washed again four times then imaged. Secondary antibodies used were Goat anti-Rabbit IgG H&L 800CW and Goat anti-Mouse IgG H&L 680RD at 1/20000 dilution.



All lanes : Anti-GRB2 antibody [Y237] (ab32037) at 1/5000 dilution

Lane 1 : Wild-type HeLa (Human epithelial cell line from cervix adenocarcinoma) whole cell lysate

Lane 2 : GRB2 knockout HeLa (Human epithelial cell line from cervix adenocarcinoma) whole cell lysate

Lane 3 : HL-60 (Human promyelocytic leukemia cell line) whole cell lysate

Lane 4 : Caco-2 (Human colorectal adenocarcinoma cell line) whole cell lysate

Lysates/proteins at 20 µg per lane.

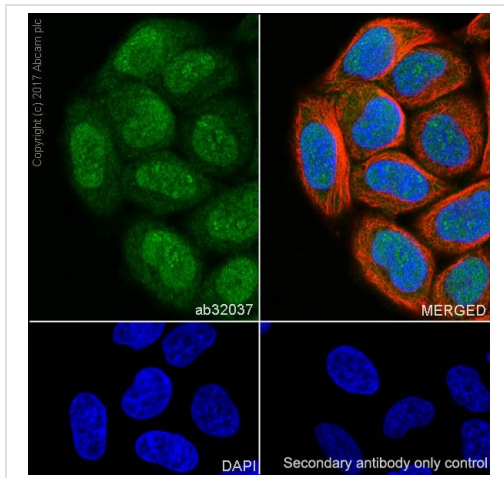
Performed under reducing conditions.

Predicted band size: 25 kDa

Observed band size: 25 kDa

Lanes 1 - 4: Merged signal (red and green). Green - ab32037 observed at 25 kDa. Red - loading control, **ab7291** (Mouse anti-Alpha Tubulin [DM1A]) observed at 55 kDa.

ab32037 was shown to react with GRB2 in western blot. The band observed in the CRISPR-Cas9 edited cell lysate lane above 25 kDa is likely to represent an insertion. This has not been investigated further and the functional properties of the gene product have not been determined. Cell lysates were subjected to SDS-PAGE. Membranes were blocked in 3 % milk in TBS-T (0.1 % Tween®) before incubation with ab32037 and **ab7291** (Mouse anti-Alpha Tubulin [DM1A]) overnight at 4 °C at a 1 in 5000 dilution and a 1 in 20000 dilution respectively. Blots were incubated with Goat anti-Rabbit IgG H&L (IRDye® 800CW) preabsorbed (**ab216773**) and Goat anti-Mouse IgG H&L (IRDye® 680RD) preabsorbed (**ab216776**) secondary antibodies at 1 in 20000 dilution for 1 h at room temperature before imaging.

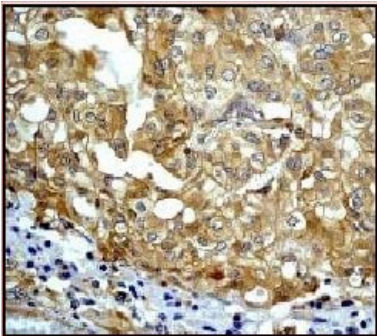


Immunocytochemistry/ Immunofluorescence - Anti-GRB2 antibody [Y237] (ab32037)

Immunocytochemistry/immunofluorescent analysis of 4% paraformaldehyde-fixed, 0.1% TritonX-100 permeabilised HeLa (Human cervix adenocarcinoma epithelial cell) cells staining GRB2 with ab32037 at 1/200 dilution (green), followed by AlexaFluor®488 Goat anti-Rabbit secondary antibody (**ab150077**) at 1/1000 dilution (blue). Confocal image showing nuclear and weak cytoplasmic staining in HeLa cell line. Anti-alpha Tubulin antibody [DM1A] - Microtubule Marker (Alexa Fluor® 594) (**ab195889**) was used as a counterstain at 1/200 dilution (red). DAPI was used as a nuclear counterstain.

Secondary antibody only control: Used PBS instead of primary antibody, secondary antibody is [secondary antibody name] **ab150077** at 1/1000 dilution.

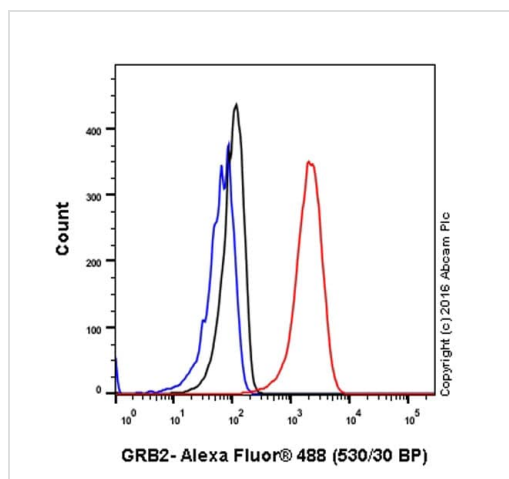
Perform heat mediated antigen retrieval with citrate buffer pH 6 before commencing with IHC staining protocol.



Immunohistochemistry (Formalin/PFA-fixed paraffin-embedded sections) - Anti-GRB2 antibody [Y237] (ab32037)

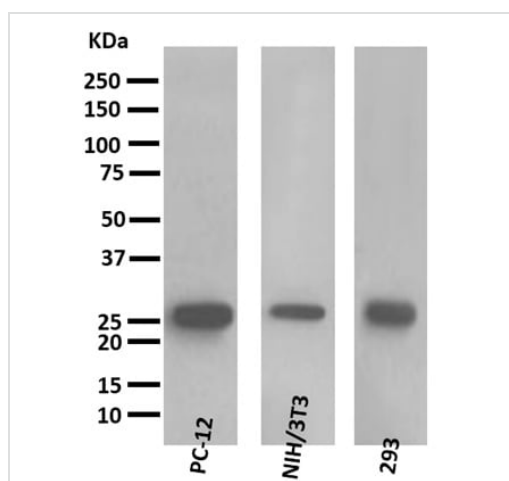
Immunohistochemical analysis of GRB2 expression in paraffin embedded human ovarian carcinoma, using 1/100 ab32037.

Perform heat mediated antigen retrieval with citrate buffer pH 6 before commencing with IHC staining protocol.



Flow Cytometry (Intracellular) - Anti-GRB2 antibody
[Y237] (ab32037)

Intracellular Flow Cytometry analysis of HeLa (Human cervix adenocarcinoma epithelial cell) cells labeling GRB2 (red) with ab32037 at a 1/20 dilution. Cells were fixed with 4% paraformaldehyde and permeabilized with 90% methanol. A goat anti-rabbit IgG (Alexa Fluor® 488) (**ab150077**) was used as the secondary antibody at a 1/2000 dilution. Black - Rabbit monoclonal IgG (Black) (**ab172730**). Blue (unlabeled control) - Cell without incubation with primary antibody and secondary antibody (Blue).



Western blot - Anti-GRB2 antibody [Y237] (ab32037)

All lanes : Anti-GRB2 antibody [Y237] (ab32037) at 1/10000 dilution

Lane 1 : PC-12 (rat adrenal gland pheochromocytoma) cell lysate

Lane 2 : NIH/3T3 (mouse embryonic fibroblast) cell lysate

Lane 3 : HEK293 (human epithelial cell line from embryonic kidney) cell lysate

Lysates/proteins at 10 µg per lane.

Secondary

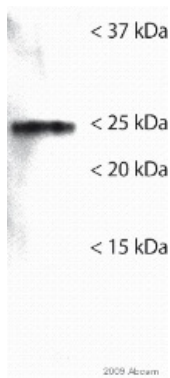
All lanes : Goat Anti-Rabbit IgG, (H+L), Peroxidase conjugated at 1/2000 dilution

Predicted band size: 25 kDa

Observed band size: 25 kDa

Blocking/Dilution buffer : 5% NFDM/TBST

Exposure time : 3 minutes



Western blot - Anti-GRB2 antibody [Y237] (ab32037)

This image is a courtesy of Anonymous Abreview

Anti-GRB2 antibody [Y237] (ab32037) at 1/5000 dilution + Lysate prepared from human Mesothelial cell line MeT-5A at 4 µg

Secondary

Goat Anti-Rabbit IgG H&L (HRP) ([ab6721](#)) at 1/2000 dilution

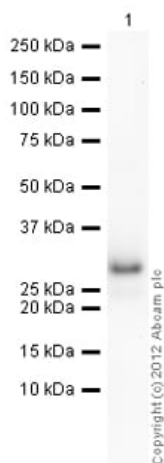
Developed using the ECL technique.

Performed under reducing conditions.

Predicted band size: 25 kDa

Observed band size: 24 kDa

Exposure time: 1 minute



Western blot - Anti-GRB2 antibody [Y237] (ab32037)

Anti-GRB2 antibody [Y237] (ab32037) at 1/5000 dilution + Recombinant Human GRB2 protein ([ab85917](#)) at 0.01 µg

Secondary

Goat Anti-Rabbit IgG H&L (HRP) preadsorbed ([ab97080](#)) at 1/5000 dilution

Developed using the ECL technique.

Performed under reducing conditions.

Predicted band size: 25 kDa

Exposure time: 2 minutes

Why choose a recombinant antibody?



Research with confidence
Consistent and reproducible results



Long-term and scalable supply
Recombinant technology



Success from the first experiment
Confirmed specificity



Ethical standards compliant
Animal-free production

Anti-GRB2 antibody [Y237] (ab32037)

Please note: All products are "FOR RESEARCH USE ONLY. NOT FOR USE IN DIAGNOSTIC PROCEDURES"

Our Abpromise to you: Quality guaranteed and expert technical support

- Replacement or refund for products not performing as stated on the datasheet
- Valid for 12 months from date of delivery
- Response to your inquiry within 24 hours
- We provide support in Chinese, English, French, German, Japanese and Spanish
- Extensive multi-media technical resources to help you
- We investigate all quality concerns to ensure our products perform to the highest standards

If the product does not perform as described on this datasheet, we will offer a refund or replacement. For full details of the Abpromise, please visit <https://www.abcam.co.jp/abpromise> or contact our technical team.

Terms and conditions

- Guarantee only valid for products bought direct from Abcam or one of our authorized distributors