


# Anti-GRB2 antibody [M331] ab86713

**1 References** [画像数 1](#)

### 製品の概要

---

|              |   |
|--------------|---|
| 製品名          | Anti-GRB2 antibody [M331]   |
| 製品の詳細        | Mouse monoclonal [M331] to GRB2   |
| 由来種          | Mouse   |
| アプリケーション     | <b>適用あり:</b> WB   |
| 種交差性         | <b>交差種:</b> Rat<br><b>交差が予測される動物種:</b> Mouse   |
| 免疫原          | Recombinant full length Rat protein   |
| ポジティブ・コントロール | PC12 cell lysate.   |
| 特記事項         | <p>The Life Science industry has been in the grips of a reproducibility crisis for a number of years. Abcam is leading the way in addressing this with our range of recombinant monoclonal antibodies and knockout edited cell lines for gold-standard validation. Please check that this product meets your needs before purchasing.</p> <p>If you have any questions, special requirements or concerns, please send us an inquiry and/or contact our Support team ahead of purchase. Recommended alternatives for this product can be found below, along with publications, customer reviews and Q&amp;As</p> |

### 製品の特性

---

|        |   |
|--------|---|
| 製品の状態  | Liquid  |
| 保存方法   | Shipped at 4°C. Store at -20°C. Stable for 12 months at -20°C.                |
| バッファー  | Preservative: 0.05% Sodium azide<br>Constituents: 0.1% BSA, 50% Glycerol, PBS |
| 精製度    | Protein A purified  |
| ポリ/モノ  | モノクローナル   |
| クローン名  | M331  |
| アイソタイプ | IgG1  |

### アプリケーション

---

## The Abpromise guarantee

**Abpromise保証は、次のテスト済みアプリケーションにおけるab86713の使用に適用されず**

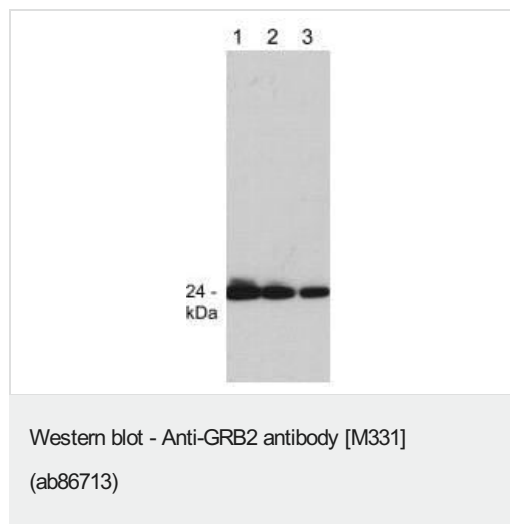
アプリケーションノートには、推奨の開始希釈率がありますが、適切な希釈率につきましてはご検討ください。

| アプリケーション | Abreviews | 特記事項  |
|----------|-----------|---|
| WB       |           | 1/1000. Detects a band of approximately 24 kDa. |

## ターゲット情報

|              |  |
|--------------|--|
| <b>機能</b>    | Adapter protein that provides a critical link between cell surface growth factor receptors and the Ras signaling pathway.<br>Isoform GRB3-3 does not bind to phosphorylated epidermal growth factor receptor (EGFR) but inhibits EGF-induced transactivation of a RAS-responsive element. Isoform GRB3-3 acts as a dominant negative protein over GRB2 and by suppressing proliferative signals, may trigger active programmed cell death. |
| <b>配列類似性</b> | Belongs to the GRB2/sem-5/DRK family.<br>Contains 1 SH2 domain.<br>Contains 2 SH3 domains.   |
| <b>ドメイン</b>  | The SH3 domains mediate interaction with RALGPS1 and SHB.  |
| <b>細胞内局在</b> | Golgi apparatus.   |

## 画像



**Lane 1 :** Anti-GRB2 antibody [M331] (ab86713) at 1/250 dilution  
**Lane 2 :** Anti-GRB2 antibody [M331] (ab86713) at 1/500 dilution  
**Lane 3 :** Anti-GRB2 antibody [M331] (ab86713) at 1/1000 dilution

**All lanes :** PC12 cell lysate

**Observed band size:** 24 kDa

**Please note:** All products are "FOR RESEARCH USE ONLY. NOT FOR USE IN DIAGNOSTIC PROCEDURES"

## Our Abpromise to you: Quality guaranteed and expert technical support

- Replacement or refund for products not performing as stated on the datasheet
- Valid for 12 months from date of delivery
- Response to your inquiry within 24 hours

- We provide support in Chinese, English, French, German, Japanese and Spanish
- Extensive multi-media technical resources to help you
- We investigate all quality concerns to ensure our products perform to the highest standards

If the product does not perform as described on this datasheet, we will offer a refund or replacement. For full details of the Abpromise, please visit <https://www.abcam.co.jp/abpromise> or contact our technical team.

### **Terms and conditions**

---

- Guarantee only valid for products bought direct from Abcam or one of our authorized distributors