

### Anti-Granzyme B antibody ab53097

★★★★★ [5 Abreviews](#) [8 References](#) [画像数 2](#)

#### 製品の概要

製品名	Anti-Granzyme B antibody
製品の詳細	Rabbit polyclonal to Granzyme B
由来種	Rabbit
特異性	Detects endogenous levels of total Granzyme B protein. Due to sequence homology this antibody is predicted to cross-react with granzyme H.
アプリケーション	<b>適用あり:</b> WB, IHC-P
種交差性	<b>交差種:</b> Mouse, Human
免疫原	Synthetic peptide (Human)
特記事項	<p>The Life Science industry has been in the grips of a reproducibility crisis for a number of years. Abcam is leading the way in addressing this with our range of recombinant monoclonal antibodies and knockout edited cell lines for gold-standard validation. Please check that this product meets your needs before purchasing.</p> <p>If you have any questions, special requirements or concerns, please send us an inquiry and/or contact our Support team ahead of purchase. Recommended alternatives for this product can be found below, along with publications, customer reviews and Q&amp;As</p>

#### 製品の特性

製品の状態	Liquid
保存方法	Shipped at 4°C. Store at -20°C. Stable for 12 months at -20°C.
バッファー	<p>pH: 7.40</p> <p>Preservative: 0.02% Sodium azide</p> <p>Constituents: 50% Glycerol (glycerin, glycerine), 0.87% Sodium chloride, PBS</p>
精製度	Without Mg+2 and Ca+2
ポリ/モノ	Immunogen affinity purified
アイソタイプ	ポリクローナル
	IgG

#### アプリケーション

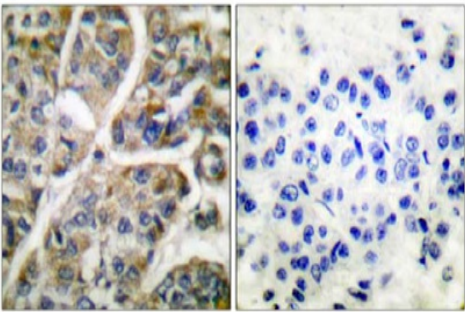
**The Abpromise guarantee**      **Abpromise保証は、**次のテスト済みアプリケーションにおけるab53097の使用に適用されます  
アプリケーションノートには、推奨の開始希釈率がありますが、適切な希釈率につきましてはご検討ください。

アプリケーション	Abreviews	特記事項
WB		1/300 - 1/1000. Detects a band of approximately 28 kDa (predicted molecular weight: 28 kDa).
IHC-P	★★★★★ (3)	Use a concentration of 50 - 100 µg/ml.

ターゲット情報

機能	This enzyme is necessary for target cell lysis in cell-mediated immune responses. It cleaves after Asp. Seems to be linked to an activation cascade of caspases (aspartate-specific cysteine proteases) responsible for apoptosis execution. Cleaves caspase-3, -7, -9 and 10 to give rise to active enzymes mediating apoptosis.
配列類似性	Belongs to the peptidase S1 family. Granzyme subfamily. Contains 1 peptidase S1 domain.
細胞内局在	Cytoplasmic granule. Cytoplasmic granules of cytolytic T-lymphocytes and natural killer cells.

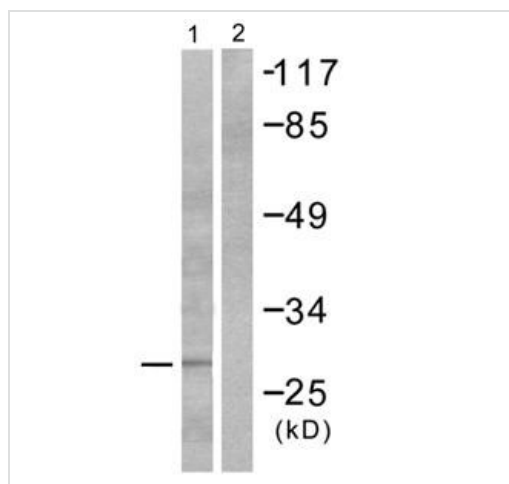
画像



Peptide                      -                      +

Immunohistochemistry (Formalin/PFA-fixed paraffin-embedded sections) - Anti-Granzyme B antibody (ab53097)

ab53097 (1/50) staining Granzyme B in paraffin-embedded human breast carcinoma tissue. Right-hand panel represents a negative control for which ab53097 was pre-incubated with the immunizing peptide.



Western blot - Anti-Granzyme B antibody (ab53097)

**All lanes :** Anti-Granzyme B antibody (ab53097) at 1/300 dilution

**Lane 1 :** NIH/3T3 cell extract

**Lane 2 :** NIH/3T3 cell extract with immunizing peptide

**Predicted band size:** 28 kDa

**Observed band size:** 28 kDa

**Please note:** All products are "FOR RESEARCH USE ONLY. NOT FOR USE IN DIAGNOSTIC PROCEDURES"

### Our Abpromise to you: Quality guaranteed and expert technical support

- Replacement or refund for products not performing as stated on the datasheet
- Valid for 12 months from date of delivery
- Response to your inquiry within 24 hours
- We provide support in Chinese, English, French, German, Japanese and Spanish
- Extensive multi-media technical resources to help you
- We investigate all quality concerns to ensure our products perform to the highest standards

If the product does not perform as described on this datasheet, we will offer a refund or replacement. For full details of the Abpromise, please visit <https://www.abcam.co.jp/abpromise> or contact our technical team.

### Terms and conditions

- Guarantee only valid for products bought direct from Abcam or one of our authorized distributors