


Anti-Granuphilin antibody ab110519

[2 References](#) [画像数 1](#)

製品の概要

製品名	Anti-Granuphilin antibody
製品の詳細	Rabbit polyclonal to Granuphilin
由来種	Rabbit
アプリケーション	適用あり: WB
種交差性	交差種: Mouse 交差が予測される動物種: Rat, Human 
免疫原	Synthetic peptide derived from internal sequence of Human SYTL4.
ポジティブ・コントロール	Extracts from NIH-3T3 cells
特記事項	<p>The Life Science industry has been in the grips of a reproducibility crisis for a number of years. Abcam is leading the way in addressing this with our range of recombinant monoclonal antibodies and knockout edited cell lines for gold-standard validation. Please check that this product meets your needs before purchasing.</p> <p>If you have any questions, special requirements or concerns, please send us an inquiry and/or contact our Support team ahead of purchase. Recommended alternatives for this product can be found below, along with publications, customer reviews and Q&As</p>

製品の特性

製品の状態	Liquid
保存方法	Shipped at 4°C. Store at -20°C. Stable for 12 months at -20°C.
バッファー	pH: 7.40 Preservative: 0.02% Sodium azide Constituents: PBS, 0.88% Sodium chloride, 50% Glycerol (glycerin, glycerine)
精製度	Immunogen affinity purified
ポリモノ	ポリクローナル
アイソタイプ	IgG

アプリケーション

The Abpromise guarantee

Abpromise保証は、次のテスト済みアプリケーションにおけるab110519の使用に適用されます

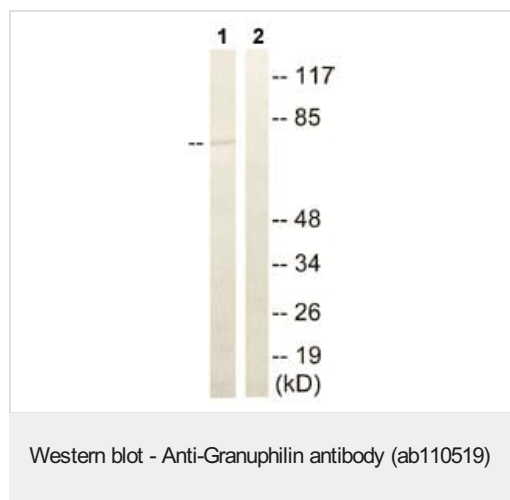
アプリケーションノートには、推奨の開始希釈率がありますが、適切な希釈率につきましてはご確認ください。

アプリケーション	Abreviews	特記事項
WB		1/500 - 1/1000. Predicted molecular weight: 76 kDa.

ターゲット情報

機能	Modulates exocytosis of dense-core granules and secretion of hormones in the pancreas and the pituitary. Interacts with vesicles containing negatively charged phospholipids in a Ca(2+)-independent manner.
配列類似性	Contains 2 C2 domains. Contains 1 FYVE-type zinc finger. Contains 1 RabBD (Rab-binding) domain.
細胞内局在	Membrane. Cell membrane. Cytoplasmic vesicle > secretory vesicle membrane. Detected close to the plasma membrane and on secretory granules. In pancreas, interacts with insulin-containing vesicles.

画像



All lanes : Anti-Granuphilin antibody (ab110519)

Lane 1 : Extracts from NIH-3T3 cells

Lane 2 : Extracts from NIH-3T3 cells with immunising peptide at 10 µg

Lysates/proteins at 30 µg per lane.

Predicted band size: 76 kDa

Please note: All products are "FOR RESEARCH USE ONLY. NOT FOR USE IN DIAGNOSTIC PROCEDURES"

Our Abpromise to you: Quality guaranteed and expert technical support

- Replacement or refund for products not performing as stated on the datasheet
- Valid for 12 months from date of delivery
- Response to your inquiry within 24 hours
- We provide support in Chinese, English, French, German, Japanese and Spanish
- Extensive multi-media technical resources to help you
- We investigate all quality concerns to ensure our products perform to the highest standards

If the product does not perform as described on this datasheet, we will offer a refund or replacement. For full details of the Abpromise, please visit <https://www.abcam.co.jp/abpromise> or contact our technical team.

Terms and conditions

- Guarantee only valid for products bought direct from Abcam or one of our authorized distributors