

Anti-Granulocytes antibody [SPM250] ab75701

1 References [画像数 1](#)

製品の概要

製品名	Anti-Granulocytes antibody [SPM250]
製品の詳細	Mouse monoclonal [SPM250] to Granulocytes
由来種	Mouse
特異性	ab75701 reacts with early precursor and mature forms of human myeloid cells. We have data to indicate that this antibody may not cross react with Rat. However, this has not been conclusively tested and expression levels may vary in certain cell lines/tissues.
アプリケーション	適用あり: IHC-P
種交差性	交差種: Human
免疫原	Tissue, cells or virus corresponding to Human Granulocytes. Nuclei from pokeweed mitogen stimulated peripheral blood lymphocytes.
ポジティブ・コントロール	Human tonsil or lymph node tissue
特記事項	<p>ab75701 can be useful for the detection of myeloid leukemias and granulocytic sarcomas and also can be used as a marker of granulocytes in normal tissues or inflammatory processes.</p> <p>The Life Science industry has been in the grips of a reproducibility crisis for a number of years. Abcam is leading the way in addressing this with our range of recombinant monoclonal antibodies and knockout edited cell lines for gold-standard validation. Please check that this product meets your needs before purchasing.</p> <p>If you have any questions, special requirements or concerns, please send us an inquiry and/or contact our Support team ahead of purchase. Recommended alternatives for this product can be found below, along with publications, customer reviews and Q&As</p>

製品の特性

製品の状態	Liquid
保存方法	Shipped at 4°C. Upon delivery aliquot and store at -20°C. Avoid freeze / thaw cycles.
バッファー	<p>pH: 7.2</p> <p>Preservative: 0.09% Sodium azide</p> <p>Constituents: BSA, 0.0268% PBS</p>
精製度	Protein G purified

一次抗体 備考	ab75701 can be useful for the detection of myeloid leukemias and granulocytic sarcomas and also can be used as a marker of granulocytes in normal tissues or inflammatory processes.
ポリ/モノ	モノクローナル
クローン名	SPM250
アイソタイプ	IgG1
軽鎖の種類	kappa

アプリケーション

The Abpromise guarantee **Abpromise保証は、** 次のテスト済みアプリケーションにおけるab75701の使用に適用されます
アプリケーションノートには、推奨の開始希釈率がありますが、適切な希釈率につきましてはご検討ください。

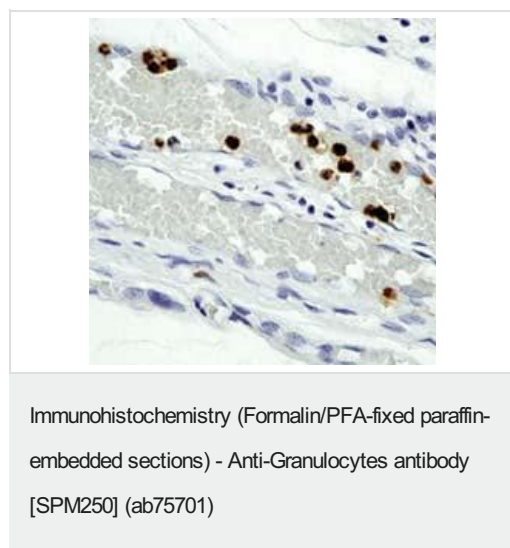
アプリケーション	Abreviews	特記事項
IHC-P		1/50.

ターゲット情報

関連性

Granulocytes are a type of white blood cell filled with microscopic granules that are little sacs containing enzymes, compounds that digest microorganisms. They are part of the innate immune system and have somewhat nonspecific, broad-based activity. They do not respond exclusively to specific antigens, as do B-cells and T-cells. Neutrophils, eosinophils and basophils are all types of granulocytes. They are named by the staining features of their granules in the laboratory: Neutrophils have "neutral" subtle granules; Eosinophils have prominent granules that stain readily with the acid dye eosin; and Basophils have prominent granules that stain readily basic (non acidic) dyes.

画像



ab75701, at a 1/50 dilution, staining Granulocytes in human tonsil tissue by Immunohistochemistry.

Please note: All products are "FOR RESEARCH USE ONLY. NOT FOR USE IN DIAGNOSTIC PROCEDURES"

Our Abpromise to you: Quality guaranteed and expert technical support

- Replacement or refund for products not performing as stated on the datasheet
- Valid for 12 months from date of delivery
- Response to your inquiry within 24 hours

- We provide support in Chinese, English, French, German, Japanese and Spanish
- Extensive multi-media technical resources to help you
- We investigate all quality concerns to ensure our products perform to the highest standards

If the product does not perform as described on this datasheet, we will offer a refund or replacement. For full details of the Abpromise, please visit <https://www.abcam.co.jp/abpromise> or contact our technical team.

Terms and conditions

- Guarantee only valid for products bought direct from Abcam or one of our authorized distributors