

### Anti-GRAMD1C antibody ab121365

画像数 3

#### 製品の概要

製品名	Anti-GRAMD1C antibody
製品の詳細	Rabbit polyclonal to GRAMD1C
由来種	Rabbit
アプリケーション	<b>適用あり:</b> ICC/IF, IHC-P, WB
種交差性	<b>交差種:</b> Human <b>交差が予測される動物種:</b> Orangutan 
免疫原	Recombinant fragment, corresponding to amino acids 452-541 of Human GRAMD1C (Q8IYS0).
ポジティブ・コントロール	Human smooth muscle tissue; RT4, U251 MG, Human liver and tonsil lysates.
特記事項	<p>The Life Science industry has been in the grips of a reproducibility crisis for a number of years. Abcam is leading the way in addressing this with our range of recombinant monoclonal antibodies and knockout edited cell lines for gold-standard validation. Please check that this product meets your needs before purchasing.</p> <p>If you have any questions, special requirements or concerns, please send us an inquiry and/or contact our Support team ahead of purchase. Recommended alternatives for this product can be found below, along with publications, customer reviews and Q&amp;As</p>

#### 製品の特性

製品の状態	Liquid
保存方法	Shipped at 4°C. Upon delivery aliquot and store at -20°C. Avoid repeated freeze / thaw cycles.
バッファー	pH: 7.20 Preservative: 0.02% Sodium azide Constituents: 40% Glycerol (glycerin, glycerine), 59% PBS
精製度	Immunogen affinity purified
ポリ/モノ	ポリクローナル
アイソタイプ	IgG

#### アプリケーション

The Abpromise guarantee

**Abpromise保証は、次のテスト済みアプリケーションにおけるab121365の使用に適用されます**

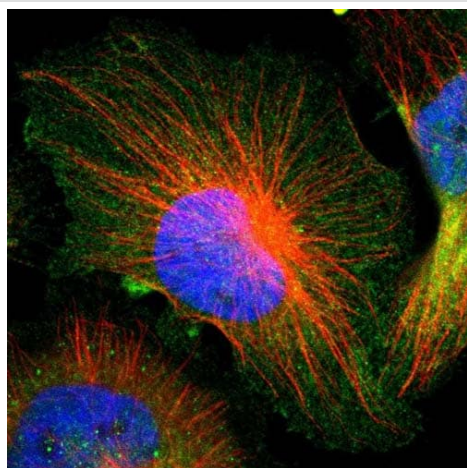
アプリケーションノートには、推奨の開始希釈率がありますが、適切な希釈率につきましてはご確認ください。

アプリケーション	Abreviews	特記事項
ICC/IF		Use a concentration of 1 - 4 µg/ml. Recommend PFA Fixation and Triton X-100 treatment
IHC-P		1/200 - 1/500. Perform heat mediated antigen retrieval with citrate buffer pH 6 before commencing with IHC staining protocol.
WB		Use a concentration of 0.04 - 0.4 µg/ml.

## ターゲット情報

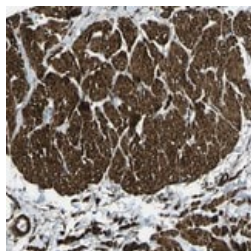
配列類似性	Contains 1 GRAM domain.
細胞内局在	Membrane.

## 画像



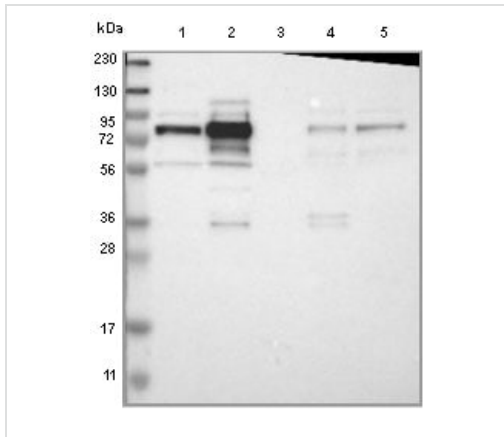
Immunocytochemistry/ Immunofluorescence - Anti-GRAMD1C antibody (ab121365)

Immunofluorescent staining of Human cell line U-251MG shows positivity in plasma membrane and cytoplasm. Recommended concentration of ab121365 1-4 µg/ml. Cells treated with PFA/Triton X-100.



Immunohistochemistry (Formalin/PFA-fixed paraffin-embedded sections) - Anti-GRAMD1C antibody (ab121365)

ab121365 at 1/500 dilution staining GRAMD1C in Paraffin-embedded Human Smooth muscle tissue by Immunohistochemistry.



Western blot - Anti-GRAMD1C antibody (ab121365)

**All lanes** : Anti-GRAMD1C antibody (ab121365) at 1/250 dilution

**Lane 1** : RT4 lysate

**Lane 2** : U251 MG lysate

**Lane 3** : Human plasma

**Lane 4** : Human liver lysate

**Lane 5** : Human tonsil lysate

Developed using the ECL technique.

**Please note:** All products are "FOR RESEARCH USE ONLY. NOT FOR USE IN DIAGNOSTIC PROCEDURES"

### Our Abpromise to you: Quality guaranteed and expert technical support

- Replacement or refund for products not performing as stated on the datasheet
- Valid for 12 months from date of delivery
- Response to your inquiry within 24 hours
- We provide support in Chinese, English, French, German, Japanese and Spanish
- Extensive multi-media technical resources to help you
- We investigate all quality concerns to ensure our products perform to the highest standards

If the product does not perform as described on this datasheet, we will offer a refund or replacement. For full details of the Abpromise, please visit <https://www.abcam.co.jp/abpromise> or contact our technical team.

### Terms and conditions

- Guarantee only valid for products bought direct from Abcam or one of our authorized distributors