

# Anti-Grainyhead-like protein 1 homolog antibody ab111582

面格新?

医薬用外劇物

### 製品の概要

製品名	Anti-Grainyhead-like protein 1 homolog antibody
製品の詳細	Rabbit polyclonal to Grainyhead-like protein 1 homolog
由来種	Rabbit
アプリケーション	<b>適用あり:</b> WB, ICC/IF
種交差性	<b>交差種:</b> Human
免疫原	Recombinant fragment, corresponding to a region within amino acids 1-208 of Human Grainyhead-like protein 1 homolog.
ポジティブ・コントロール	NT2D1, U-87 MG and MCF7 cells and whole cell lysates.
特記事項	<p>The Life Science industry has been in the grips of a reproducibility crisis for a number of years. Abcam is leading the way in addressing this with our range of recombinant monoclonal antibodies and knockout edited cell lines for gold-standard validation. Please check that this product meets your needs before purchasing.</p> <p>If you have any questions, special requirements or concerns, please send us an inquiry and/or contact our Support team ahead of purchase. Recommended alternatives for this product can be found below, along with publications, customer reviews and Q&amp;As</p>

### 製品の特性

製品の状態	Liquid
保存方法	Shipped at 4°C. Upon delivery aliquot and store at -20°C or -80°C. Avoid repeated freeze / thaw cycles.
バッファー	<p>pH: 7.00</p> <p>Preservative: 0.01% Thimerosal (merthiolate)</p> <p>Constituents: 78.99% PBS, 1% BSA, 20% Glycerol (glycerin, glycerine)</p>
精製度	Immunogen affinity purified
特記事項(精製)	ab111582 is purified by antigen affinity chromatography.
ポリ/モノ	ポリクローナル
アイソタイプ	IgG

## アプリケーション

### The Abpromise guarantee

**Abpromise保証は、**次のテスト済みアプリケーションにおけるab111582の使用に適用されます

アプリケーションノートには、推奨の開始希釈率がありますが、適切な希釈率につきましてはご確認ください。

アプリケーション	Abreviews	特記事項
WB		1/500 - 1/3000. Predicted molecular weight: 70 kDa.
ICC/IF		1/100 - 1/500.

## ターゲット情報

### 機能

Transcription factor. Isoform 1 may function as an activator and isoform 2 as a repressor in tissues where both forms are expressed. May play a role in development. May be involved in epidermal differentiation (By similarity). Binds and transactivates the EN1 promoter.

### 組織特異性

Isoform 1 is highly expressed in brain, pancreas, tonsil, placenta and kidney. Isoform 2 is highly expressed in brain and liver. Highly expressed in placental JEG-3 cells and at very low levels in non-steroidogenic cells. No expression detected in adrenal NCI-H295A cells.

### 配列類似性

Belongs to the grh/CP2 family. Grainyhead subfamily.

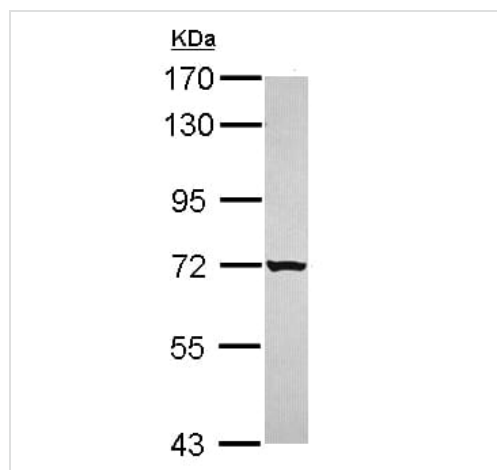
### 発生段階

Expressed in fetal liver and brain.

### 細胞内局在

Nucleus.

## 画像

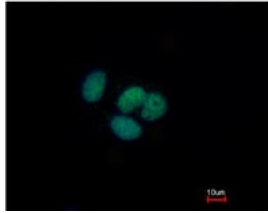
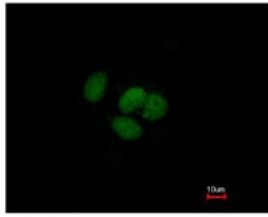


Western blot - Anti-Grainyhead-like protein 1 homolog antibody (ab111582)

Anti-Grainyhead-like protein 1 homolog antibody (ab111582) at 1/1000 dilution + NT2D1 whole cell lysate at 30 µg

**Predicted band size:** 70 kDa

7.5% SDS-PAGE.



ab111582 at 1/500 dilution staining Grainyhead-like protein 1 homolog in Paraformaldehyde-fixed MCF7 cells by Immunofluorescence. Lower image shows cells co-stained with Hoechst 33342.

Immunocytochemistry/ Immunofluorescence - Anti-Grainyhead-like protein 1 homolog antibody (ab111582)

**Please note:** All products are "FOR RESEARCH USE ONLY. NOT FOR USE IN DIAGNOSTIC PROCEDURES"

### Our Abpromise to you: Quality guaranteed and expert technical support

- Replacement or refund for products not performing as stated on the datasheet
- Valid for 12 months from date of delivery
- Response to your inquiry within 24 hours
- We provide support in Chinese, English, French, German, Japanese and Spanish
- Extensive multi-media technical resources to help you
- We investigate all quality concerns to ensure our products perform to the highest standards

If the product does not perform as described on this datasheet, we will offer a refund or replacement. For full details of the Abpromise, please visit <https://www.abcam.co.jp/abpromise> or contact our technical team.

### Terms and conditions

- Guarantee only valid for products bought direct from Abcam or one of our authorized distributors