




### Anti-GPCR TAS1R2 antibody ab77346

★★★★★ [1 Abreviews](#) [1 References](#) [画像数 1](#)

#### 製品の概要

製品名	Anti-GPCR TAS1R2 antibody
製品の詳細	Goat polyclonal to GPCR TAS1R2
由来種	Goat
アプリケーション	<b>適用あり:</b> WB
種交差性	<b>交差種:</b> Human <b>交差が予測される動物種:</b> Non human primates 
免疫原	Synthetic peptide: CSKRCQSGQKKKP , corresponding to internal sequence amino acids 495-507 of Human GPCR TAS1R2 (NP_689418.2) <div>  <a href="#">Run BLAST with</a>  <a href="#">Run BLAST with</a> </div>
ポジティブ・コントロール	Human Pancreas lysate.
特記事項	<p>The Life Science industry has been in the grips of a reproducibility crisis for a number of years. Abcam is leading the way in addressing this with our range of recombinant monoclonal antibodies and knockout edited cell lines for gold-standard validation. Please check that this product meets your needs before purchasing.</p> <p>If you have any questions, special requirements or concerns, please send us an inquiry and/or contact our Support team ahead of purchase. Recommended alternatives for this product can be found below, along with publications, customer reviews and Q&amp;As</p>

#### 製品の特性

製品の状態	Liquid
保存方法	Shipped at 4°C. Upon delivery aliquot and store at -20°C. Avoid repeated freeze / thaw cycles.
バッファー	pH: 7.30 Preservative: 0.02% Sodium azide Constituents: 0.5% BSA, 0.5% Tris buffered saline
精製度	Immunogen affinity purified
特記事項(精製)	ab77346 is purified from goat serum by ammonium sulphate precipitation followed by antigen affinity chromatography using the immunising peptide.

ポリ/モノ  
アイソタイプ

ポリクローナル  
IgG

## アプリケーション

**The Abpromise guarantee**      **Abpromise保証は、** 次のテスト済みアプリケーションにおけるab77346の使用に適用されます  
アプリケーションノートには、推奨の開始希釈率がありますが、適切な希釈率につきましてはご検討ください。

アプリケーション	Abreviews	特記事項
WB		

## 追加情報

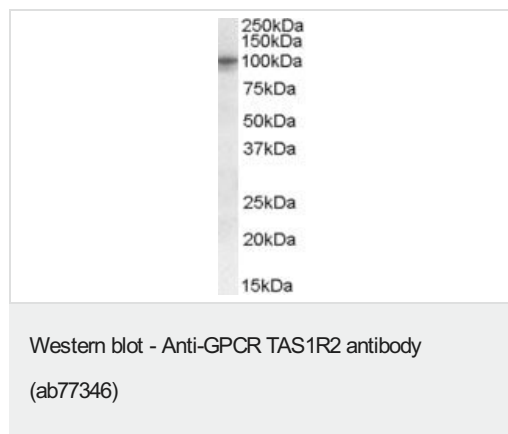
Peptide ELISA: Antibody detection limit dilution: 1/32000.  
WB: Use at a concentration of 1 - 3 µg/ml. Detects a band of approximately 100 kDa (predicted molecular weight: 95 kDa).

Not yet tested in other applications.  
Optimal dilutions/concentrations should be determined by the end user.

## ターゲット情報

**機能** Putative taste receptor. TAS1R2/TAS1R3 recognizes diverse natural and synthetic sweeteners.  
**配列類似性** Belongs to the G-protein coupled receptor 3 family. TAS1R subfamily.  
**細胞内局在** Cell membrane.

## 画像



Anti-GPCR TAS1R2 antibody (ab77346) at 0.3 µg/ml + Human pancreas lysate in RIPA buffer at 35 µg

**Predicted band size:** 95 kDa  
**Observed band size:** 100 kDa

Primary incubation was 1 hour. Detected by chemiluminescence.

**Please note:** All products are "FOR RESEARCH USE ONLY. NOT FOR USE IN DIAGNOSTIC PROCEDURES"

## Our Abpromise to you: Quality guaranteed and expert technical support

- Replacement or refund for products not performing as stated on the datasheet

- Valid for 12 months from date of delivery
- Response to your inquiry within 24 hours
- We provide support in Chinese, English, French, German, Japanese and Spanish
- Extensive multi-media technical resources to help you
- We investigate all quality concerns to ensure our products perform to the highest standards

If the product does not perform as described on this datasheet, we will offer a refund or replacement. For full details of the Abpromise, please visit <https://www.abcam.co.jp/abpromise> or contact our technical team.

#### **Terms and conditions**

---

- Guarantee only valid for products bought direct from Abcam or one of our authorized distributors