


# Anti-GPCR RDC1/CXCR-7 antibody ab72100

★★★★★ [1 Abreviews](#) [37 References](#) [画像数 5](#)

### 製品の概要

製品名	Anti-GPCR RDC1/CXCR-7 antibody
製品の詳細	Rabbit polyclonal to GPCR RDC1/CXCR-7
由来種	Rabbit
アプリケーション	<b>適用あり:</b> WB, IHC-P
種交差性	<b>交差種:</b> Mouse, Human <b>交差が予測される動物種:</b> Chicken, Xenopus laevis 
免疫原	Synthetic peptide corresponding to Human GPCR RDC1/CXCR-7 aa 106-117. Sequence: QHNQWPMGELTC

 [Run BLAST with](#)

 [Run BLAST with](#)

### 特記事項

The Life Science industry has been in the grips of a reproducibility crisis for a number of years. Abcam is leading the way in addressing this with our range of recombinant monoclonal antibodies and knockout edited cell lines for gold-standard validation. Please check that this product meets your needs before purchasing.

If you have any questions, special requirements or concerns, please send us an inquiry and/or contact our Support team ahead of purchase. Recommended alternatives for this product can be found below, along with publications, customer reviews and Q&As

### 製品の特性

製品の状態	Liquid
保存方法	Shipped at 4°C. Upon delivery aliquot and store at -20°C. Avoid freeze / thaw cycles.
バッファー	pH: 7.40 Preservative: 0.05% Sodium azide Constituents: 0.05% BSA, PBS
精製度	Protein G purified
ポリ/モノ	ポリクローナル
アイソタイプ	IgG

### アプリケーション

## The Abpromise guarantee

**Abpromise保証は、次のテスト済みアプリケーションにおけるab72100の使用に適用されます**

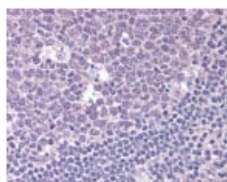
アプリケーションノートには、推奨の開始希釈率がありますが、適切な希釈率につきましてはご検討ください。

アプリケーション	Abreviews	特記事項
WB		Use a concentration of 4 - 6 µg/ml. Detects a band of approximately 42 kDa (predicted molecular weight: 42 kDa).
IHC-P		Use a concentration of 10 µg/ml.

## ターゲット情報

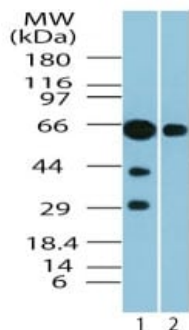
機能	Receptor for CXCL12/SDF1. Acts as coreceptor with CXCR4 for a restricted number of HIV isolates.
組織特異性	Expressed in monocytes, basophils, and B-cells. Lower expression in CD4+ T-lymphocytes and natural killer cells.
配列類似性	Belongs to the G-protein coupled receptor 1 family.
細胞内局在	Cell membrane.

## 画像



Immunohistochemistry (Formalin/PFA-fixed paraffin-embedded sections) - Anti-GPCR RDC1/CXCR-7 antibody (ab72100)

Immunohistochemical analysis of GPCR RDC1/CXCR-7 in paraffin-embedded formalin-fixed human tonsil tissue using ab72100 at 10 ug/ml



Western blot - Anti-GPCR RDC1/CXCR-7 antibody (ab72100)

**All lanes :** Anti-GPCR RDC1/CXCR-7 antibody (ab72100) at 5 µg/ml

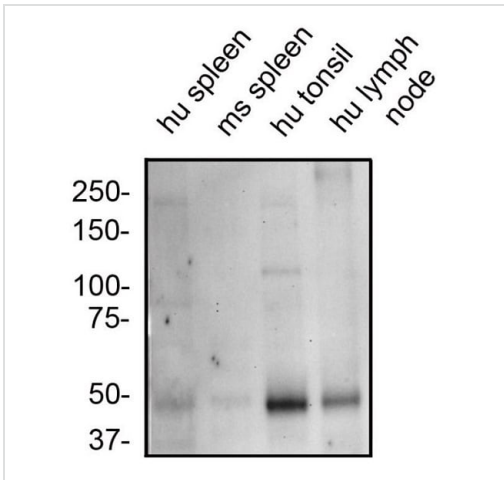
**Lane 1 :** Jurkat cell lysate

**Lane 2 :** Jurkat cell lysate with immunizing peptide

**Predicted band size:** 42 kDa

**Observed band size:** 42 kDa

**Additional bands at:** 29 kDa, 65 kDa. We are unsure as to the identity of these extra bands.



Western blot - Anti-GPCR RDC1/CXCR-7 antibody (ab72100)

**All lanes** : Anti-GPCR RDC1/CXCR-7 antibody (ab72100) at 2 µg/ml

**Lane 1** : Human spleen

**Lane 2** : Mouse spleen

**Lane 3** : Human tonsil

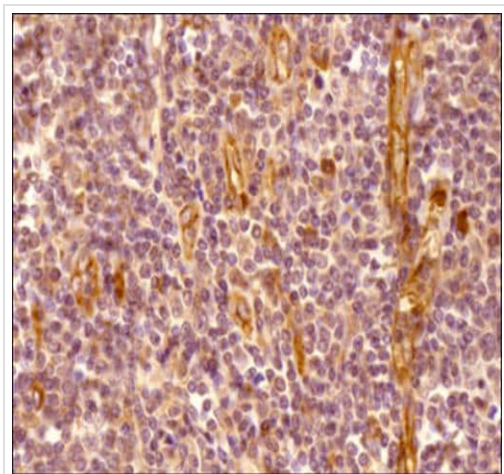
**Lane 4** : Human lymph node

**Secondary**

**All lanes** : anti-rabbit HRP

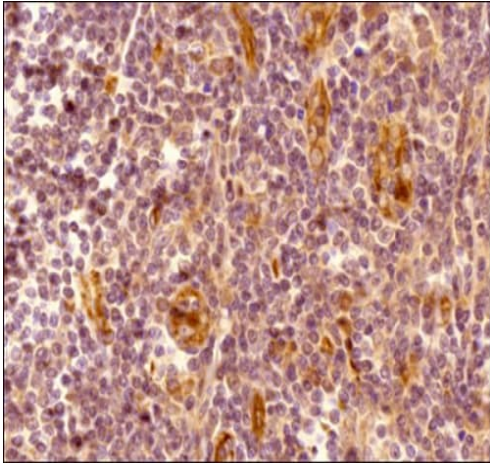
**Predicted band size:** 42 kDa

Blocking buffer: 5% non-fat milk in TBST.



Immunohistochemistry (Formalin/PFA-fixed paraffin-embedded sections) - Anti-GPCR RDC1/CXCR-7 antibody (ab72100)

Immunohistochemistry (Formalin/PFA-fixed paraffin-embedded sections) of human tonsil staining GPCR RDC1/CXCR-7 with ab72100 (5ug/ml). The staining was developed using HRP labeled anti-rabbit secondary antibody and DAB reagent, and nuclei of cells were counter-stained with hematoxylin.



Immunohistochemistry (Formalin/PFA-fixed paraffin-embedded sections) - Anti-GPCR RDC1/CXCR-7 antibody (ab72100)

IHC analysis of a formalin fixed paraffin embedded tissue section of human tonsil using 5ug/ml concentration of ab72100. The staining was developed using HRP labeled anti-rabbit secondary antibody and DAB reagent, and nuclei of cells were counter-stained with hematoxylin.

**Please note:** All products are "FOR RESEARCH USE ONLY. NOT FOR USE IN DIAGNOSTIC PROCEDURES"

### **Our Abpromise to you: Quality guaranteed and expert technical support**

---

- Replacement or refund for products not performing as stated on the datasheet
- Valid for 12 months from date of delivery
- Response to your inquiry within 24 hours
- We provide support in Chinese, English, French, German, Japanese and Spanish
- Extensive multi-media technical resources to help you
- We investigate all quality concerns to ensure our products perform to the highest standards

If the product does not perform as described on this datasheet, we will offer a refund or replacement. For full details of the Abpromise, please visit <https://www.abcam.co.jp/abpromise> or contact our technical team.

### **Terms and conditions**

---

- Guarantee only valid for products bought direct from Abcam or one of our authorized distributors