


### Anti-GPCR RDC1/CXCR-7 antibody ab38089

★★★★★ **3 Abreviews** **25 References** 画像数 1

#### 製品の概要

製品名	Anti-GPCR RDC1/CXCR-7 antibody
製品の詳細	Rabbit polyclonal to GPCR RDC1/CXCR-7
由来種	Rabbit
アプリケーション	適用あり: WB
種交差性	交差種: Human 交差が予測される動物種: Mouse 
免疫原	Synthetic peptide corresponding to Human GPCR RDC1/CXCR-7 aa 1-100 conjugated to keyhole limpet haemocyanin. (Peptide available as <b>ab38088</b> )
特記事項	<p>The Life Science industry has been in the grips of a reproducibility crisis for a number of years. Abcam is leading the way in addressing this with our range of recombinant monoclonal antibodies and knockout edited cell lines for gold-standard validation. Please check that this product meets your needs before purchasing.</p> <p>If you have any questions, special requirements or concerns, please send us an inquiry and/or contact our Support team ahead of purchase. Recommended alternatives for this product can be found below, along with publications, customer reviews and Q&amp;As</p>

#### 製品の特性

製品の状態	Liquid
保存方法	Shipped at 4°C. Store at +4°C short term (1-2 weeks). Upon delivery aliquot. Store at -20°C or -80°C. Avoid freeze / thaw cycle.
バッファー	<p>pH: 7.40</p> <p>Preservative: 0.02% Sodium azide</p> <p>Constituent: PBS</p> <p>Batches of this product that have a concentration &lt; 1mg/ml may have BSA added as a stabilising agent. If you would like information about the formulation of a specific lot, please contact our scientific support team who will be happy to help.</p>
精製度	Immunogen affinity purified
ポリ/モノ	ポリクローナル

アイソタイプ

IgG

## アプリケーション

### The Abpromise guarantee

**Abpromise保証は、次のテスト済みアプリケーションにおけるab38089の使用に適用されます**

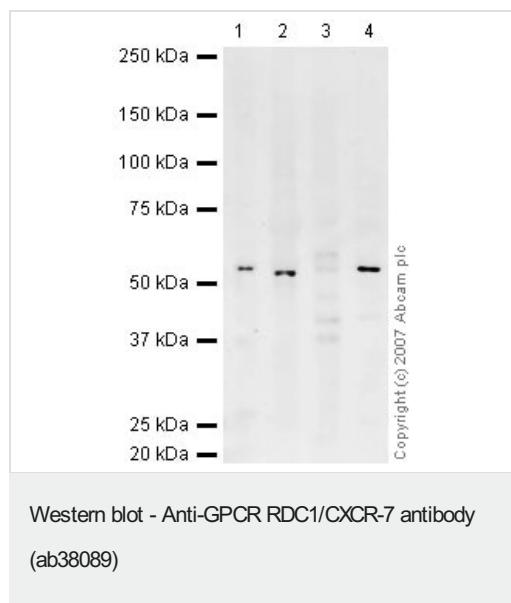
アプリケーションノートには、推奨の開始希釈率がありますが、適切な希釈率につきましてはご検討ください。

アプリケーション	Abreviews	特記事項
WB	★★★★☆ (2)	1/250. Detects a band of approximately 52 kDa (predicted molecular weight: 42 kDa). Can be blocked with <b>Human GPCR RDC1/CXCR-7 peptide (ab38088)</b> . GPCR RCD1 is glycosylated so it is not unexpected that it runs higher than predicted (based on primary structure) in SDS PAGE.

## ターゲット情報

機能	Receptor for CXCL12/SDF1. Acts as coreceptor with CXCR4 for a restricted number of HIV isolates.
組織特異性	Expressed in monocytes, basophils, and B-cells. Lower expression in CD4+ T-lymphocytes and natural killer cells.
配列類似性	Belongs to the G-protein coupled receptor 1 family.
細胞内局在	Cell membrane.

## 画像



**All lanes :** Anti-GPCR RDC1/CXCR-7 antibody (ab38089) at 1/250 dilution

**Lane 1 :** Human Brain Tissue Lysate

**Lane 2 :** Human Testis Tissue Lysate

**Lane 3 :** Human Liver Tissue Lysate

**Lane 4 :** Human Heart Tissue Lysate

Lysates/proteins at 10 µg per lane.

### Secondary

**All lanes :** IRDye 680 Conjugated Goat Anti-Rabbit IgG (H+L) at 1/10000 dilution

Performed under reducing conditions.

**Predicted band size:** 42 kDa

**Observed band size:** 52 kDa

GPCR RCD1 is glycosylated so it is not unexpected that it runs higher than predicted (based on primary structure) in SDS PAGE.

**Please note:** All products are "FOR RESEARCH USE ONLY. NOT FOR USE IN DIAGNOSTIC PROCEDURES"

### **Our Abpromise to you: Quality guaranteed and expert technical support**

---

- Replacement or refund for products not performing as stated on the datasheet
- Valid for 12 months from date of delivery
- Response to your inquiry within 24 hours
- We provide support in Chinese, English, French, German, Japanese and Spanish
- Extensive multi-media technical resources to help you
- We investigate all quality concerns to ensure our products perform to the highest standards

If the product does not perform as described on this datasheet, we will offer a refund or replacement. For full details of the Abpromise, please visit <https://www.abcam.co.jp/abpromise> or contact our technical team.

### **Terms and conditions**

---

- Guarantee only valid for products bought direct from Abcam or one of our authorized distributors