





Anti-GPCR RDC1/CXCR-7 antibody ab117836

5 References [画像数 4](#)

製品の概要

製品名	Anti-GPCR RDC1/CXCR-7 antibody
製品の詳細	Rabbit polyclonal to GPCR RDC1/CXCR-7
由来種	Rabbit
アプリケーション	適用あり: WB, ICC/IF
種交差性	交差種: Mouse, Rat, Human 交差が予測される動物種: Chicken, Cow, Dog 
免疫原	Synthetic peptide corresponding to Mouse GPCR RDC1/CXCR-7 aa 300-400 (C terminal) conjugated to keyhole limpet haemocyanin.  Run BLAST with  Run BLAST with 
ポジティブ・コントロール	ICC/IF: HEK293 cells, HeLa cells. WB: Mouse brain lysate, Rat brain lysate.
特記事項	<p>The Life Science industry has been in the grips of a reproducibility crisis for a number of years. Abcam is leading the way in addressing this with our range of recombinant monoclonal antibodies and knockout edited cell lines for gold-standard validation. Please check that this product meets your needs before purchasing.</p> <p>If you have any questions, special requirements or concerns, please send us an inquiry and/or contact our Support team ahead of purchase. Recommended alternatives for this product can be found below, along with publications, customer reviews and Q&As</p>

製品の特性

製品の状態	Liquid
保存方法	Shipped at 4°C. Upon delivery aliquot and store at -20°C. Avoid freeze / thaw cycles.
バッファー	Preservative: 0.02% Sodium azide Constituent: 99% Whole serum
精製度	Whole antiserum
ポリ/モノ	ポリクローナル
アイソタイプ	IgG

アプリケーション

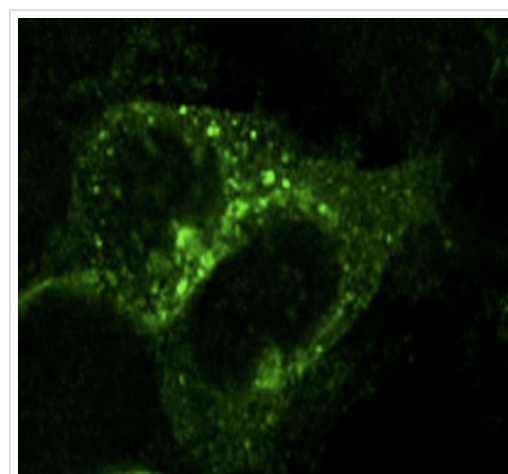
The Abpromise guarantee Abpromise保証は、 次のテスト済みアプリケーションにおけるab117836の使用に適用されます
アプリケーションノートには、推奨の開始希釈率がありますが、適切な希釈率につきましてはご確認ください。

アプリケーション	Abreviews	特記事項
WB		1/5000. Predicted molecular weight: 41 kDa.
ICC/IF		1/5000.

ターゲット情報

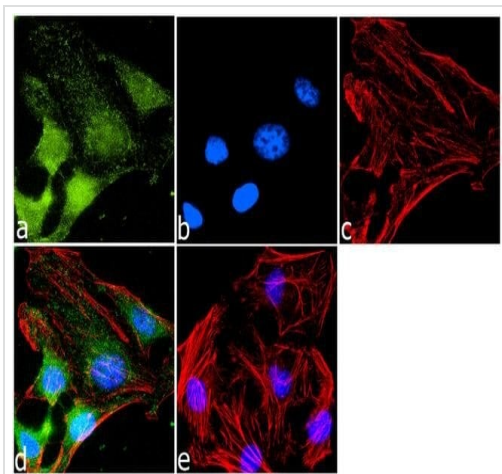
機能	Receptor for CXCL12/SDF1. Acts as coreceptor with CXCR4 for a restricted number of HIV isolates.
組織特異性	Expressed in monocytes, basophils, and B-cells. Lower expression in CD4+ T-lymphocytes and natural killer cells.
配列類似性	Belongs to the G-protein coupled receptor 1 family.
細胞内局在	Cell membrane.

画像



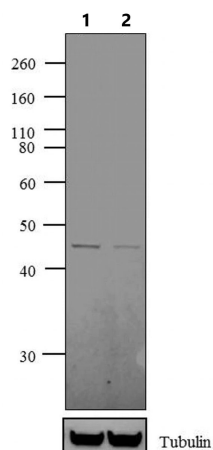
Immunocytochemistry analysis of HEK293 cells using 1/5000 ab117836.

Immunocytochemistry/ Immunofluorescence - Anti-GPCR RDC1/CXCR-7 antibody (ab117836)



Immunocytochemistry/ Immunofluorescence - Anti-GPCR RDC1/CXCR-7 antibody (ab117836)

Immunofluorescence analysis of CXCR7 was done on 70% confluent log phase HeLa cells. The cells were fixed with 4% paraformaldehyde for 10 minutes, permeabilized with 0.1% Triton™ X-100 for 10 minutes, and blocked with 1% BSA for 1 hour at room temperature. The cells were labeled with CXCR7 Rabbit Polyclonal Antibody (ab117836) at 1/1000 dilution in 0.1% BSA and incubated for 3 hours at room temperature and then labeled with Goat anti-Rabbit IgG (H+L) Supercloonal™ Secondary Antibody, Alexa Fluor® 488 conjugate at a dilution of 1/2000 for 45 minutes at room temperature (Panel a: green). Nuclei (Panel b: blue) were stained with SlowFade® Gold Antifade Mountant with DAPI. F-actin (Panel c: red) was stained with Rhodamine Phalloidin (1/300). Panel d is a merged image showing Cytoplasmic localization. Panel e is a no primary antibody control. The images were captured at 60X magnification.



Western blot - Anti-GPCR RDC1/CXCR-7 antibody (ab117836)

All lanes :

Lane 1 : Mouse brain whole cell lysate

Lane 2 : Rat brain whole cell lysate

Lysates/proteins at 20 µg per lane.

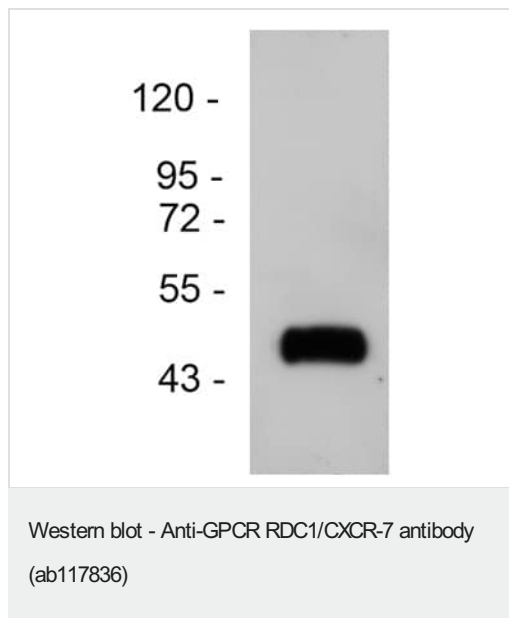
Predicted band size: 41 kDa

Observed band size: 41 kDa

The blots were probed with Anti-CXCR7 Rabbit Polyclonal Antibody (ab117836, 1/4000-1/6000 dilution) and detected by chemiluminescence using Goat anti-Rabbit IgG (H+L) Supercloonal™ Secondary Antibody, HRP conjugate (0.4 µg/mL, 1/2500 dilution).

Known quantity of protein samples were electrophoresed using Novex® NuPAGE® 12 % Bis-Tris gel, XCell SureLock™

Electrophoresis System and Novex® Sharp Pre-Stained Protein Standard. Resolved proteins were then transferred onto a nitrocellulose membrane with iBlot® 2 Dry Blotting System. The membrane was probed with the relevant primary and secondary Antibody following blocking with 5 % skimmed milk. Chemiluminescent detection was performed using Pierce™ ECL Western Blotting Substrate.



Anti-GPCR RDC1/CXCR-7 antibody (ab117836) at 1/5000 dilution
+ Mouse brain lysate

Predicted band size: 41 kDa

Please note: All products are "FOR RESEARCH USE ONLY. NOT FOR USE IN DIAGNOSTIC PROCEDURES"

Our Abpromise to you: Quality guaranteed and expert technical support

- Replacement or refund for products not performing as stated on the datasheet
- Valid for 12 months from date of delivery
- Response to your inquiry within 24 hours
- We provide support in Chinese, English, French, German, Japanese and Spanish
- Extensive multi-media technical resources to help you
- We investigate all quality concerns to ensure our products perform to the highest standards

If the product does not perform as described on this datasheet, we will offer a refund or replacement. For full details of the Abpromise, please visit <https://www.abcam.co.jp/abpromise> or contact our technical team.

Terms and conditions

- Guarantee only valid for products bought direct from Abcam or one of our authorized distributors