

Anti-GPCR GPR87 antibody ab77517

4 References [画像数 2](#)

製品の概要

製品名	Anti-GPCR GPR87 antibody
製品の詳細	Rabbit polyclonal to GPCR GPR87
由来種	Rabbit
アプリケーション	適用あり: ELISA, WB, ICC/IF
種交差性	交差種: Human 交差が予測される動物種: Mouse 
免疫原	Synthetic peptide derived from internal sequence of human GPCR GPR87.
ポジティブ・コントロール	Extracts from HUVEC cells and HT-29 cells. HUVEC cells.
特記事項	<p>The Life Science industry has been in the grips of a reproducibility crisis for a number of years. Abcam is leading the way in addressing this with our range of recombinant monoclonal antibodies and knockout edited cell lines for gold-standard validation. Please check that this product meets your needs before purchasing.</p> <p>If you have any questions, special requirements or concerns, please send us an inquiry and/or contact our Support team ahead of purchase. Recommended alternatives for this product can be found below, along with publications, customer reviews and Q&As</p>

製品の特性

製品の状態	Liquid
保存方法	Shipped at 4°C. Store at -20°C. Stable for 12 months at -20°C.
バッファー	<p>pH: 7.40</p> <p>Preservative: 0.02% Sodium azide</p> <p>Constituents: 50% Glycerol, 0.87% Sodium chloride, PBS</p>
精製度	Without Mg ²⁺ and Ca ²⁺
ポリ/モノ	ポリクローナル
アイソタイプ	IgG

アプリケーション

The Abpromise guarantee

Abpromise保証は、次のテスト済みアプリケーションにおけるab77517の使用に適用されます

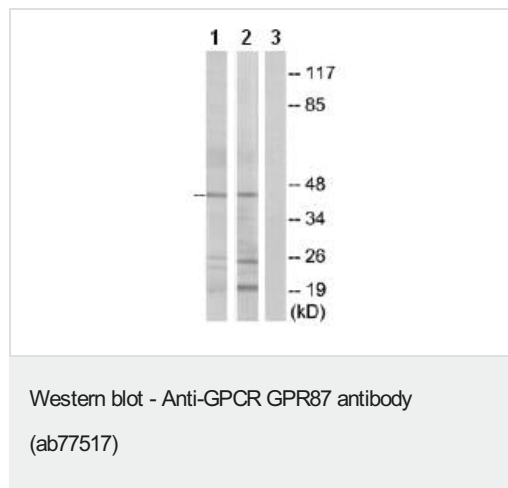
アプリケーションノートには、推奨の開始希釈率がありますが、適切な希釈率につきましてはご検討ください。

アプリケーション	Abreviews	特記事項
ELISA		Use at an assay dependent concentration.
WB		1/500 - 1/1000. Predicted molecular weight: 41 kDa.
ICC/IF		1/500 - 1/1000.

ターゲット情報

機能	Receptor for lysophosphatidic acid (LPA). Necessary for p53/TP53-dependent survival in response to DNA damage.
組織特異性	Expressed in placenta and prostate. Weaker expression in thymus. Not expressed in thalamus, hippocampus, pons or cerebellum. Overexpressed in squamous cell carcinoma of the lung.
配列類似性	Belongs to the G-protein coupled receptor 1 family.
細胞内局在	Cell membrane.

画像



All lanes : Anti-GPCR GPR87 antibody (ab77517) at 1/500 dilution

Lane 1 : Extracts from HUVEC cells

Lane 2 : Extracts from HT-29 cells

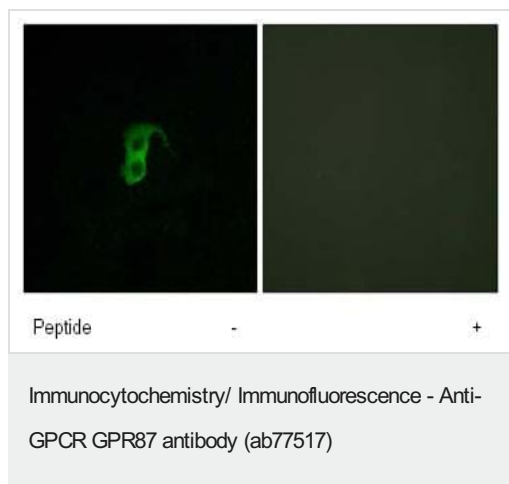
Lane 3 : Extracts from HUVEC cells with immunising peptide at 5 µg

Lysates/proteins at 5 µg per lane.

Predicted band size: 41 kDa

Observed band size: 44 kDa

Additional bands at: 20 kDa, 25 kDa. We are unsure as to the identity of these extra bands.



Immunofluorescence analysis of GPCR GPR87 in HUVEC cells using ab77517, at 1/500 dilution, in the absence or presence of immunising peptide.

Please note: All products are "FOR RESEARCH USE ONLY. NOT FOR USE IN DIAGNOSTIC PROCEDURES"

Our Abpromise to you: Quality guaranteed and expert technical support

- Replacement or refund for products not performing as stated on the datasheet
- Valid for 12 months from date of delivery
- Response to your inquiry within 24 hours
- We provide support in Chinese, English, French, German, Japanese and Spanish
- Extensive multi-media technical resources to help you
- We investigate all quality concerns to ensure our products perform to the highest standards

If the product does not perform as described on this datasheet, we will offer a refund or replacement. For full details of the Abpromise, please visit <https://www.abcam.co.jp/abpromise> or contact our technical team.

Terms and conditions

- Guarantee only valid for products bought direct from Abcam or one of our authorized distributors