

Anti-GPCR GPR48/LGR4 antibody ab75501

★★★★★ [1 Abreviews](#) [1 References](#) [画像数 1](#)

製品の概要

製品名	Anti-GPCR GPR48/LGR4 antibody
製品の詳細	Rabbit polyclonal to GPCR GPR48/LGR4
由来種	Rabbit
アプリケーション	適用あり: WB
種交差性	交差種: Human
免疫原	Synthetic peptide. This information is proprietary to Abcam and/or its suppliers.
ポジティブ・コントロール	Jurkat cell extract
特記事項	<p>The Life Science industry has been in the grips of a reproducibility crisis for a number of years. Abcam is leading the way in addressing this with our range of recombinant monoclonal antibodies and knockout edited cell lines for gold-standard validation. Please check that this product meets your needs before purchasing.</p> <p>If you have any questions, special requirements or concerns, please send us an inquiry and/or contact our Support team ahead of purchase. Recommended alternatives for this product can be found below, along with publications, customer reviews and Q&As</p>

製品の特性

製品の状態	Liquid
保存方法	Shipped at 4°C. Upon delivery aliquot and store at -20°C. Avoid freeze / thaw cycles.
バッファー	<p>pH: 7.40</p> <p>Preservative: 0.02% Sodium azide</p> <p>Constituents: 50% Glycerol (glycerin, glycerine), 0.87% Sodium chloride, PBS</p> <p>Without Mg2+ and Ca2+</p>
精製度	Immunogen affinity purified
特記事項 (精製)	Affinity-purified from rabbit antiserum by affinity-chromatography using epitope-specific immunogen.
ポリ/モノ	ポリクローナル
アイソタイプ	IgG

アプリケーション

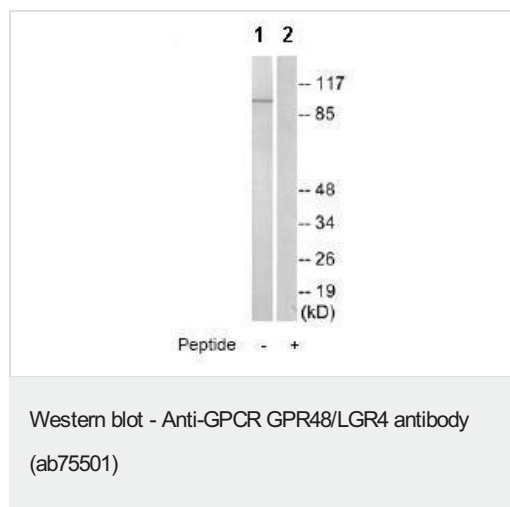
The Abpromise guarantee Abpromise保証は、 次のテスト済みアプリケーションにおけるab75501の使用に適用されます
アプリケーションノートには、推奨の開始希釈率がありますが、適切な希釈率につきましてはご確認ください。

アプリケーション	Abreviews	特記事項
WB		1/500 - 1/1000. Detects a band of approximately 104 kDa (predicted molecular weight: 104 kDa).

ターゲット情報

機能	Orphan receptor.
組織特異性	Expressed in multiple steroidogenic tissues: placenta, ovary, testis and adrenal. Expressed also in spinal cord, thyroid, stomach, trachea, heart, pancreas, kidney, prostate and spleen.
配列類似性	Belongs to the G-protein coupled receptor 1 family. Contains 15 LRR (leucine-rich) repeats. Contains 1 LRRNT domain.
細胞内局在	Cell membrane.

画像



All lanes : Anti-PCR GPR48/LGR4 antibody (ab75501) at 1/500 dilution

Lane 1 : Jurkat cell extract

Lane 2 : Jurkat cell extract with immunising peptide at 10 µg

Lysates/proteins at 30 µg per lane.

Predicted band size: 104 kDa

Observed band size: 104 kDa

Please note: All products are "FOR RESEARCH USE ONLY. NOT FOR USE IN DIAGNOSTIC PROCEDURES"

Our Abpromise to you: Quality guaranteed and expert technical support

- Replacement or refund for products not performing as stated on the datasheet
- Valid for 12 months from date of delivery
- Response to your inquiry within 24 hours
- We provide support in Chinese, English, French, German, Japanese and Spanish
- Extensive multi-media technical resources to help you

- We investigate all quality concerns to ensure our products perform to the highest standards

If the product does not perform as described on this datasheet, we will offer a refund or replacement. For full details of the Abpromise, please visit <https://www.abcam.co.jp/abpromise> or contact our technical team.

Terms and conditions

- Guarantee only valid for products bought direct from Abcam or one of our authorized distributors