

Anti-GPCR GPR124 antibody ab67279

画像数 2

製品の概要

製品名	Anti-GPCR GPR124 antibody
製品の詳細	Rabbit polyclonal to GPCR GPR124
由来種	Rabbit
アプリケーション	適用あり: WB, IHC-P
種交差性	交差種: Human
免疫原	Synthetic peptide (Human) of 15 amino acids in length, near the C terminus
ポジティブ・コントロール	Human Bladder Tissue Lysate
特記事項	<p>The Life Science industry has been in the grips of a reproducibility crisis for a number of years. Abcam is leading the way in addressing this with our range of recombinant monoclonal antibodies and knockout edited cell lines for gold-standard validation. Please check that this product meets your needs before purchasing.</p> <p>If you have any questions, special requirements or concerns, please send us an inquiry and/or contact our Support team ahead of purchase. Recommended alternatives for this product can be found below, along with publications, customer reviews and Q&As</p>

製品の特性

製品の状態	Liquid
保存方法	Shipped at 4°C. Store at +4°C.
バッファー	pH: 7.2 Preservative: 0.02% Sodium azide Constituent: PBS
精製度	Immunogen affinity purified
ポリ/モノ	ポリクローナル
アイソタイプ	IgG

アプリケーション

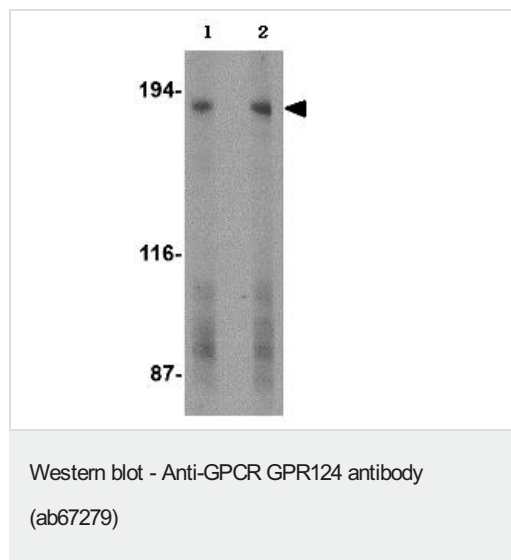
The Abpromise guarantee **Abpromise保証は、**次のテスト済みアプリケーションにおけるab67279の使用に適用されます
アプリケーションノートには、推奨の開始希釈率がありますが、適切な希釈率につきましてはご検討ください。

アプリケーション	Abreviews	特記事項
WB		Use a concentration of 1 - 4 µg/ml. Detects a band of approximately 180 kDa (predicted molecular weight: 142 kDa).
IHC-P		Use a concentration of 2.5 µg/ml.

ターゲット情報

機能	Endothelial receptor that acts as an essential regulator of CNS angiogenesis. Required for normal endothelial cell sprouting and migration in the forebrain and neural tube.
組織特異性	Expressed in endothelial cells (at protein level). Abundantly expressed in tumor vessels, heart, placenta, ovary, small intestine, and colon.
配列類似性	<p>Belongs to the G-protein coupled receptor 2 family. LN-TM7 subfamily.</p> <p>Contains 1 GPS domain.</p> <p>Contains 1 Ig-like (immunoglobulin-like) domain.</p> <p>Contains 4 LRR (leucine-rich) repeats.</p> <p>Contains 1 LRRCT domain.</p> <p>Contains 1 LRRNT domain.</p>
ドメイン	Binds to DLG1 through its PDZ-binding motif.
細胞内局在	Cell membrane.

画像



Lane 1 : Anti-GPCR GPR124 antibody (ab67279) at 2 µg/ml

Lane 2 : Anti-GPCR GPR124 antibody (ab67279) at 4 µg/ml

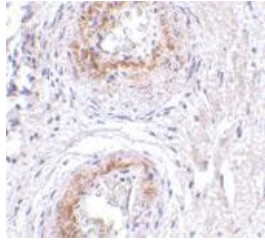
All lanes : Human bladder tissue lysate

Lysates/proteins at 15 µg per lane.

Predicted band size: 142 kDa

Observed band size: 180 kDa

Additional bands at: 95 kDa. We are unsure as to the identity of these extra bands.



ab67279 at 2.5µg/ml staining of GPCR GPR124 in human bladder tissue using IHC-P.

Immunohistochemistry (Formalin/PFA-fixed paraffin-embedded sections) - Anti-GPCR GPR124 antibody (ab67279)

Please note: All products are "FOR RESEARCH USE ONLY. NOT FOR USE IN DIAGNOSTIC PROCEDURES"

Our Abpromise to you: Quality guaranteed and expert technical support

- Replacement or refund for products not performing as stated on the datasheet
- Valid for 12 months from date of delivery
- Response to your inquiry within 24 hours
- We provide support in Chinese, English, French, German, Japanese and Spanish
- Extensive multi-media technical resources to help you
- We investigate all quality concerns to ensure our products perform to the highest standards

If the product does not perform as described on this datasheet, we will offer a refund or replacement. For full details of the Abpromise, please visit <https://www.abcam.co.jp/abpromise> or contact our technical team.

Terms and conditions

- Guarantee only valid for products bought direct from Abcam or one of our authorized distributors