



Anti-GPCR GPR119 antibody ab75312

★★★★★ [2 Abreviews](#) [2 References](#) [画像数 2](#)

製品の概要

製品名	Anti-GPCR GPR119 antibody
製品の詳細	Rabbit polyclonal to GPCR GPR119
由来種	Rabbit
アプリケーション	適用あり: ELISA, IHC-Fr, IHC-P, WB, ICC/IF
種交差性	交差種: Mouse, Human
免疫原	Synthetic peptide: KMEHAGAMAGGYRSPRTPSDFKALRTVSVL , corresponding to internal sequence amino acids 201-230 of Human GPCR GPR119  Run BLAST with  Run BLAST with

特記事項

The Life Science industry has been in the grips of a reproducibility crisis for a number of years. Abcam is leading the way in addressing this with our range of recombinant monoclonal antibodies and knockout edited cell lines for gold-standard validation. Please check that this product meets your needs before purchasing.

If you have any questions, special requirements or concerns, please send us an inquiry and/or contact our Support team ahead of purchase. Recommended alternatives for this product can be found below, along with publications, customer reviews and Q&As

製品の特性

製品の状態	Liquid
保存方法	Shipped at 4°C. Upon delivery aliquot and store at -20°C. Avoid freeze / thaw cycles.
バッファー	pH: 7.40 Preservative: 0.02% Sodium azide Constituents: 50% Glycerol, 0.87% Sodium chloride, PBS
精製度	Immunogen affinity purified
ポリモノ	ポリクローナル
アイソタイプ	IgG

アプリケーション

The Abpromise guarantee

Abpromise保証は、次のテスト済みアプリケーションにおけるab75312の使用に適用されます

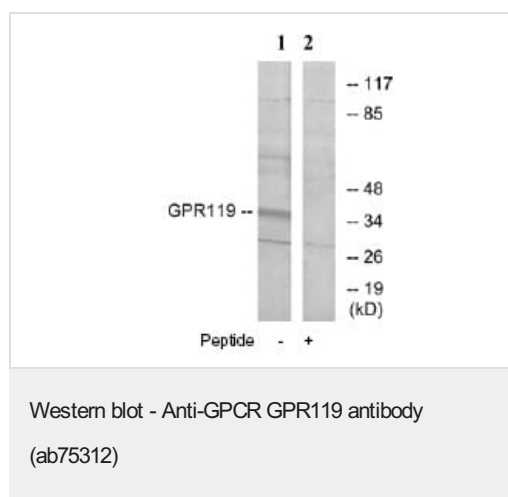
アプリケーションノートには、推奨の開始希釈率がありますが、適切な希釈率につきましてはご確認ください。

アプリケーション	Abreviews	特記事項
ELISA		Use at an assay dependent concentration.
IHC-Fr	★★★★★ (1)	Use at an assay dependent concentration.
IHC-P	★★★★★ (1)	Use at an assay dependent concentration.
WB		1/500 - 1/1000. Predicted molecular weight: 37 kDa.
ICC/IF		1/500 - 1/1000.

ターゲット情報

機能	Receptor for the endogenous fatty-acid ethanolamide oleoylethanolamide (OEA) and lysophosphatidylcholine (LPC). Functions as a glucose-dependent insulinotropic receptor. The activity of this receptor is mediated by G proteins which activate adenylate cyclase. Seems to act through a G(s) mediated pathway.
組織特異性	Predominantly expressed in the pancreas, especially in the islets.
配列類似性	Belongs to the G-protein coupled receptor 1 family.
細胞内局在	Cell membrane.

画像



All lanes : Anti-GPCR GPR119 antibody (ab75312) at 1/500 dilution

Lane 1 : extracts from K562 cells

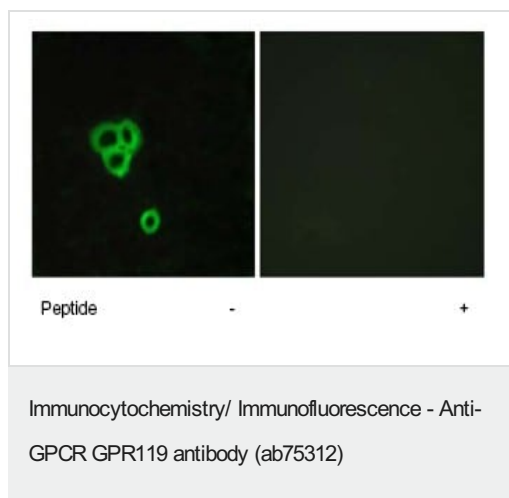
Lane 2 : extracts from K562 cells with immunising peptide at 10 µg

Lysates/proteins at 30 µg per lane.

Predicted band size: 37 kDa

Observed band size: 37 kDa

Additional bands at: 28 kDa, 60 kDa. We are unsure as to the identity of these extra bands.



Left panel: immunofluorescence analysis of MCF-7 cells, using 1/500 ab75312. Right panel: same, after pre-incubation with the immunizing peptide.

Please note: All products are "FOR RESEARCH USE ONLY. NOT FOR USE IN DIAGNOSTIC PROCEDURES"

Our Abpromise to you: Quality guaranteed and expert technical support

- Replacement or refund for products not performing as stated on the datasheet
- Valid for 12 months from date of delivery
- Response to your inquiry within 24 hours
- We provide support in Chinese, English, French, German, Japanese and Spanish
- Extensive multi-media technical resources to help you
- We investigate all quality concerns to ensure our products perform to the highest standards

If the product does not perform as described on this datasheet, we will offer a refund or replacement. For full details of the Abpromise, please visit <https://www.abcam.co.jp/abpromise> or contact our technical team.

Terms and conditions

- Guarantee only valid for products bought direct from Abcam or one of our authorized distributors