

Anti-gp78 antibody ab101284

★★★★★ [1 Abreviews](#) [1 References](#) [画像数 2](#)

製品の概要

製品名	Anti-gp78 antibody
製品の詳細	Rabbit polyclonal to gp78
由来種	Rabbit
アプリケーション	適用あり: WB, IP
種交差性	交差種: Human 交差が予測される動物種: Chimpanzee, Rhesus monkey, Orangutan 
免疫原	Synthetic peptide corresponding to Human gp78 aa 500-550. Database link: NP_001135.3
ポジティブ・コントロール	HeLa and 293T whole cell lysates
特記事項	<p>The Life Science industry has been in the grips of a reproducibility crisis for a number of years. Abcam is leading the way in addressing this with our range of recombinant monoclonal antibodies and knockout edited cell lines for gold-standard validation. Please check that this product meets your needs before purchasing.</p> <p>If you have any questions, special requirements or concerns, please send us an inquiry and/or contact our Support team ahead of purchase. Recommended alternatives for this product can be found below, along with publications, customer reviews and Q&As</p>

製品の特性

製品の状態	Liquid
保存方法	Shipped at 4°C. Upon delivery aliquot and store at -20°C. Avoid freeze / thaw cycles.
バッファー	pH: 7 Preservative: 0.09% Sodium azide Constituent: Tris citrate/phosphate
精製度	Immunogen affinity purified
ポリ/モノ	ポリクローナル
アイソタイプ	IgG

アプリケーション

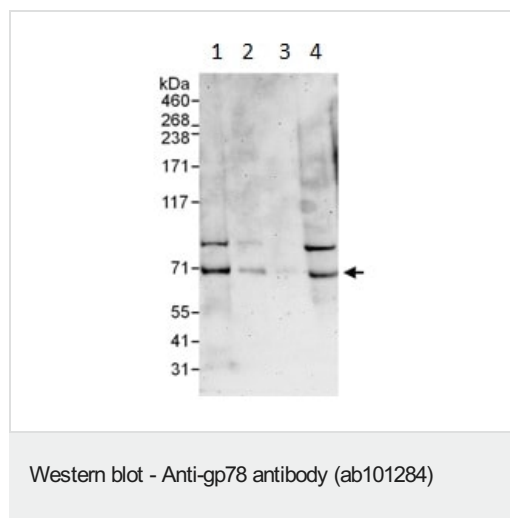
The Abpromise guarantee Abpromise保証は、 次のテスト済みアプリケーションにおけるab101284の使用に適用されます
 アプリケーションノートには、推奨の開始希釈率がありますが、適切な希釈率につきましてはご検討ください。

アプリケーション	Abreviews	特記事項
WB	★★★★★ (1)	1/2000 - 1/10000. Predicted molecular weight: 73 kDa.
IP		Use at 2-5 µg/mg of lysate.

ターゲット情報

機能	E3 ubiquitin-protein ligase which can target both itself and other proteins including CD3D and APOB for proteasomal degradation. Mediates polyubiquitination of CYP3A4. Specific receptor for the autocrine motility factor. Mediates tumor invasion and metastasis. Component of a complex required to couple deglycosylation and proteasome-mediated degradation of misfolded proteins in the endoplasmic reticulum that are retrotranslocated in the cytosol. Promotes ubiquitination of misfolded proteins such as mutant CFTR; proposed to mediate sequential ubiquitination by recognizing already ubiquitin-conjugated substrates and to cooperate with E3 ubiquitin-protein ligase RNF5.
パスウェイ	Protein modification; protein ubiquitination.
配列類似性	Contains 1 CUE domain. Contains 1 RING-type zinc finger.
細胞内局在	Endoplasmic reticulum membrane.

画像



All lanes : Anti-gp78 antibody (ab101284) at 0.1 µg/ml

Lane 1 : HeLa whole cell lysate at 50 µg

Lane 2 : HeLa whole cell lysate at 15 µg

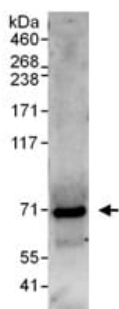
Lane 3 : HeLa whole cell lysate at 5 µg

Lane 4 : 293T whole cell lysate at 50 µg

Developed using the ECL technique.

Predicted band size: 73 kDa

Exposure time: 3 minutes



Immunoprecipitation - Anti-gp78 antibody (ab101284)

Detection of Human gp78 in immunoprecipitates of HeLa whole cell lysates (1 mg for IP, 20% of IP loaded) using ab101284 at 3 µg/mg lysate for immunoprecipitation and at 1 µg/ml for subsequent Western blotting.

Detection by chemiluminescence with an exposure time of 30 seconds.

Please note: All products are "FOR RESEARCH USE ONLY. NOT FOR USE IN DIAGNOSTIC PROCEDURES"

Our Abpromise to you: Quality guaranteed and expert technical support

- Replacement or refund for products not performing as stated on the datasheet
- Valid for 12 months from date of delivery
- Response to your inquiry within 24 hours
- We provide support in Chinese, English, French, German, Japanese and Spanish
- Extensive multi-media technical resources to help you
- We investigate all quality concerns to ensure our products perform to the highest standards

If the product does not perform as described on this datasheet, we will offer a refund or replacement. For full details of the Abpromise, please visit <https://www.abcam.co.jp/abpromise> or contact our technical team.

Terms and conditions

- Guarantee only valid for products bought direct from Abcam or one of our authorized distributors