

Anti-GOSR1/GS28 antibody [EP1768Y] ab53288

リコンビナント **RabMAb**

★★★★★ **1 Abreviews** **1 References** 画像数 8

製品の概要

製品名	Anti-GOSR1/GS28 antibody [EP1768Y]
製品の詳細	Rabbit monoclonal [EP1768Y] to GOSR1/GS28
由来種	Rabbit
特異性	The mouse and rat recommendation is based on the WB results. We do not guarantee IHC-P for mouse and rat.
アプリケーション	適用あり: Flow Cyt (Intra), ICC/IF, WB, IHC-P 適用なし: IP
種交差性	交差種: Mouse, Rat, Human
免疫原	Synthetic peptide within Human GOSR1/GS28 (N terminal). The exact sequence is proprietary.
ポジティブ・コントロール	SKBR-3 cell lysate 3T3 cell lysate HeLa cells Human stomach carcinoma
特記事項	This product is a recombinant monoclonal antibody, which offers several advantages including: <ul style="list-style-type: none"> - High batch-to-batch consistency and reproducibility - Improved sensitivity and specificity - Long-term security of supply - Animal-free production For more information see here . Our RabMAb [®] technology is a patented hybridoma-based technology for making rabbit monoclonal antibodies. For details on our patents, please refer to RabMAb[®] patents .

製品の特性

製品の状態	Liquid
保存方法	Shipped at 4°C. Store at +4°C short term (1-2 weeks). Upon delivery aliquot. Store at -20°C. Avoid freeze / thaw cycle. Stable for 12 months at -20°C.
バッファー	pH: 7.20 Preservative: 0.01% Sodium azide Constituents: 59% PBS, 40% Glycerol (glycerin, glycerine), 0.05% BSA
精製度	Protein A purified
ポリ/モノ	モノクローナル

クローン名	EP1768Y
アイソタイプ	IgG

アプリケーション

The Abpromise guarantee **Abpromise保証は、** 次のテスト済みアプリケーションにおけるab53288の使用に適用されます
アプリケーションノートには、推奨の開始希釈率がありますが、適切な希釈率につきましてはご検討ください。

アプリケーション	Abreviews	特記事項
Flow Cyt (Intra)		1/120. ab172730 - Rabbit monoclonal IgG, is suitable for use as an isotype control with this antibody. For unpurified use at 1/30.
ICC/IF		1/150. For unpurified use at 1/50 - 1/100.
WB	★★★★★ (1)	1/1000. Detects a band of approximately 29 kDa (predicted molecular weight: 29 kDa). For unpurified use at 1/250 - 1/500.
IHC-P		1/100. Perform heat mediated antigen retrieval with Tris/EDTA buffer pH 9.0 before commencing with IHC staining protocol. The mouse and rat recommendation is based on the WB results. We do not guarantee IHC-P for mouse and rat.

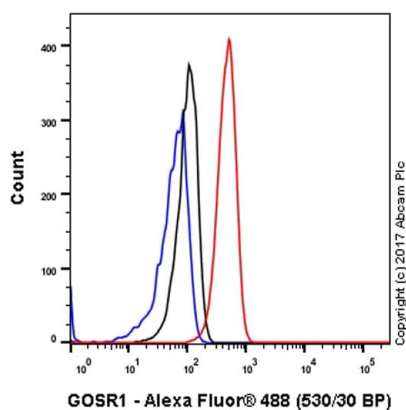
追加情報 Is unsuitable for IP.

ターゲット情報

関連性 GOSR1/GS28 is a trafficking membrane protein which transports proteins among the endoplasmic reticulum and the Golgi and between Golgi compartments; it is considered an essential component of the Golgi SNAP receptor (SNARE) complex.

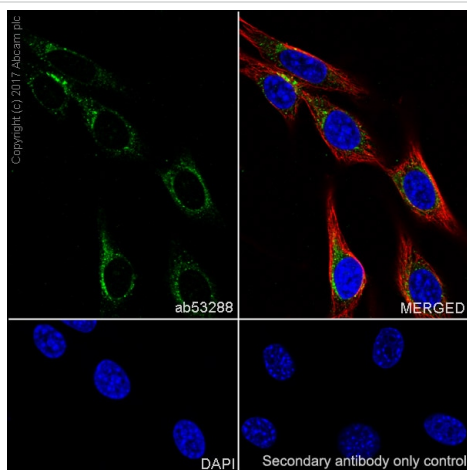
細胞内局在 Cell Membrane, Endoplasmic reticulum and Golgi Apparatus

画像



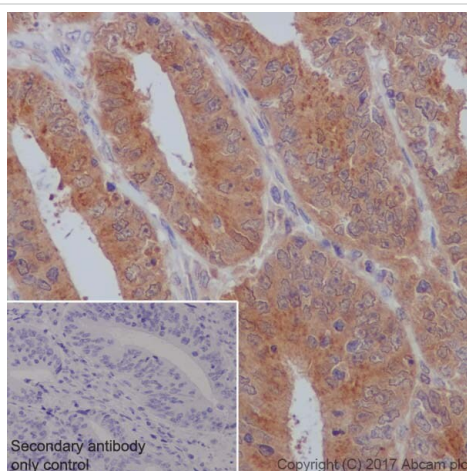
Flow Cytometry (Intracellular) - Anti-GOSR1/GS28 antibody [EP1768Y] (ab53288)

Intracellular Flow Cytometry analysis of HeLa (Human cervix adenocarcinoma epithelial cell) cells labeling GOSR1/GS28 with purified ab53288 at 1/120 dilution (10µg/ml) (red). Cells were fixed with 4% Paraformaldehyde and permeabilised with 90% methanol. A Goat anti rabbit IgG (Alexa Fluor® 488) secondary antibody was used at 1/2000 dilution. Isotype control - Rabbit monoclonal IgG (Black). Unlabeled control - Cell without incubation with primary antibody and secondary antibody (Blue).



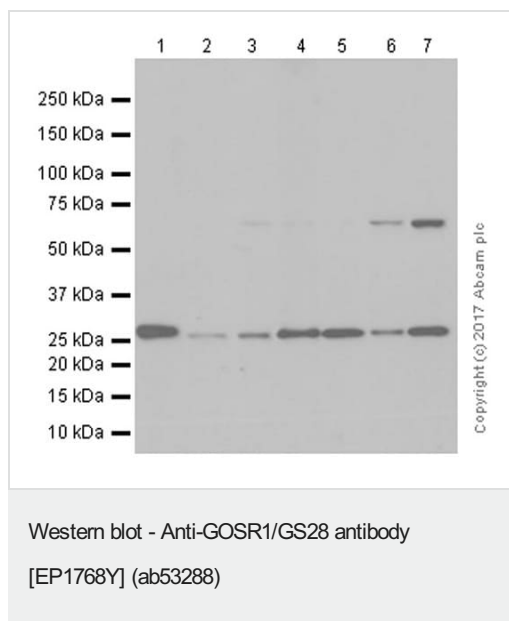
Immunocytochemistry/ Immunofluorescence - Anti-GOSR1/GS28 antibody [EP1768Y] (ab53288)

Immunocytochemistry/ Immunofluorescence analysis of NIH/3T3 (Mouse embryonic fibroblast) cells labeling GOSR1/GS28 with Purified ab53288 at 1:150 dilution. Cells were fixed in 100% Methanol. Cells were counterstained with None. **ab150077** Goat anti rabbit IgG(Alexa Fluor® 488) was used as the secondary antibody at 1:1000 dilution. DAPI nuclear counterstain. PBS instead of the primary antibody was used as the secondary antibody only control.



Immunohistochemistry (Formalin/PFA-fixed paraffin-embedded sections) - Anti-GOSR1/GS28 antibody [EP1768Y] (ab53288)

Immunohistochemistry (Formalin/PFA-fixed paraffin-embedded sections) analysis of Human colon carcinoma tissue sections labeling GOSR1/GS28 with Purified ab53288 at 1:100 dilution (12.3 µg/ml). Heat mediated antigen retrieval was performed using **ab93684** (Tris/EDTA buffer, pH 9.0). Tissue was counterstained with Hematoxylin. ImmunoHistoProbe one step HRP Polymer (ready to use) secondary antibody was used at 1:0 dilution. PBS instead of the primary antibody was used as the negative control.



All lanes : Anti-GOSR1/GS28 antibody [EP1768Y] (ab53288) at 1/1000 dilution (purified)

Lane 1 : SK-BR-3 (Human breast adenocarcinoma epithelial cell) whole cell lysates

Lane 2 : NIH/3T3 (Mouse embryonic fibroblast) whole cell lysates

Lane 3 : Neuro-2a (Mouse neuroblastoma neuroblast) whole cell lysates

Lane 4 : PC-12 (Rat adrenal gland pheochromocytoma) whole cell lysates

Lane 5 : C6 (Rat glial tumor glial cell) whole cell lysates

Lane 6 : SH-SY5Y (Human neuroblastoma epithelial cell) whole cell lysates

Lane 7 : HeLa (Human cervix adenocarcinoma epithelial cell) whole cell lysates

Lysates/proteins at 20 µg per lane.

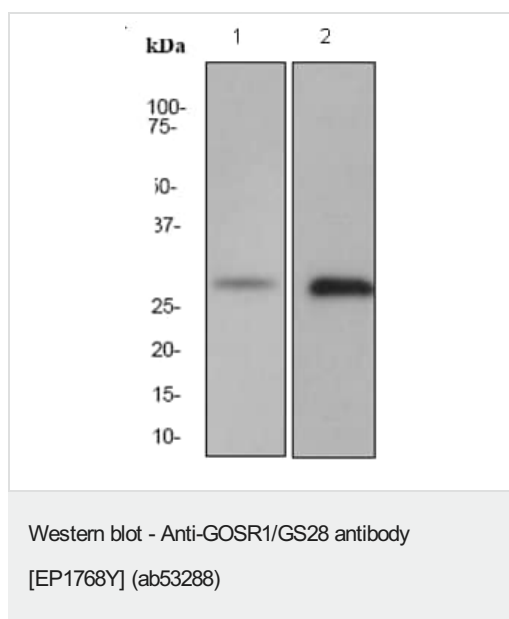
Secondary

All lanes : Goat Anti-Rabbit IgG H&L (HRP) (**ab97051**) at 1/20000 dilution

Predicted band size: 29 kDa

Observed band size: 29 kDa

Blocking and diluting buffer: 5% NFDM/TBST



All lanes : Anti-GOSR1/GS28 antibody [EP1768Y] (ab53288) at 1/500 dilution (unpurified)

Lane 1 : SKBR-3 cell lysate

Lane 2 : 3T3 cell lysate

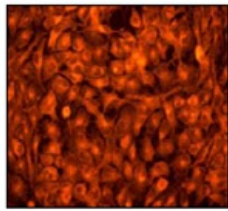
Lysates/proteins at 10 µg per lane.

Secondary

All lanes : Goat anti-rabbit HRP at 1/2000 dilution

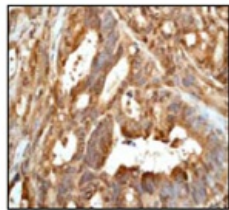
Predicted band size: 29 kDa

Observed band size: 29 kDa



HeLa cells stained with unpurified ab53288 at 1/50 - 1/100 dilution

Immunocytochemistry/ Immunofluorescence - Anti-GOSR1/GS28 antibody [EP1768Y] (ab53288)



Human stomach carcinoma staining with unpurified ab53288 at 1/100 - 1/250 dilution

Immunohistochemistry (Formalin/PFA-fixed paraffin-embedded sections) - Anti-GOSR1/GS28 antibody [EP1768Y] (ab53288)

Why choose a recombinant antibody?



Research with confidence
Consistent and reproducible results



Long-term and scalable supply
Recombinant technology



Success from the first experiment
Confirmed specificity



Ethical standards compliant
Animal-free production

Anti-GOSR1/GS28 antibody [EP1768Y] (ab53288)

Please note: All products are "FOR RESEARCH USE ONLY. NOT FOR USE IN DIAGNOSTIC PROCEDURES"

Our Abpromise to you: Quality guaranteed and expert technical support

- Replacement or refund for products not performing as stated on the datasheet
- Valid for 12 months from date of delivery
- Response to your inquiry within 24 hours
- We provide support in Chinese, English, French, German, Japanese and Spanish

- Extensive multi-media technical resources to help you
- We investigate all quality concerns to ensure our products perform to the highest standards

If the product does not perform as described on this datasheet, we will offer a refund or replacement. For full details of the Abpromise, please visit <https://www.abcam.co.jp/abpromise> or contact our technical team.

Terms and conditions

- Guarantee only valid for products bought direct from Abcam or one of our authorized distributors