

Anti-GOSR1/GS28 antibody ab88462

1 References [画像数 4](#)

製品の概要

製品名	Anti-GOSR1/GS28 antibody
製品の詳細	Mouse polyclonal to GOSR1/GS28
由来種	Mouse
アプリケーション	適用あり: WB, ICC/IF
種交差性	交差種: Human
免疫原	Recombinant full length protein within Human GOSR1/GS28 aa 1-250. The exact immunogen sequence used to generate this antibody is proprietary information. If additional detail on the immunogen is needed to determine the suitability of the antibody for your needs, please contact our Scientific Support team to discuss your requirements. Database link: NP_004862.1
ポジティブ・コントロール	Human liver membrane lysate A-431 membrane lysate Transfected 293T membrane lysate HeLa cells
特記事項	<p>The Life Science industry has been in the grips of a reproducibility crisis for a number of years. Abcam is leading the way in addressing this with our range of recombinant monoclonal antibodies and knockout edited cell lines for gold-standard validation. Please check that this product meets your needs before purchasing.</p> <p>If you have any questions, special requirements or concerns, please send us an inquiry and/or contact our Support team ahead of purchase. Recommended alternatives for this product can be found below, along with publications, customer reviews and Q&As</p>

製品の特性

製品の状態	Liquid
保存方法	Shipped at 4°C. Upon delivery aliquot and store at -20°C or -80°C. Avoid repeated freeze / thaw cycles.
バッファー	pH: 7.40 Constituent: 100% PBS
精製度	Protein A purified
ポリ/モノ	ポリクローナル
アイソタイプ	IgG

アプリケーション

The Abpromise guarantee Abpromise保証は、次のテスト済みアプリケーションにおけるab88462の使用に適用されます
アプリケーションノートには、推奨の開始希釈率がありますが、適切な希釈率につきましてはご確認ください。

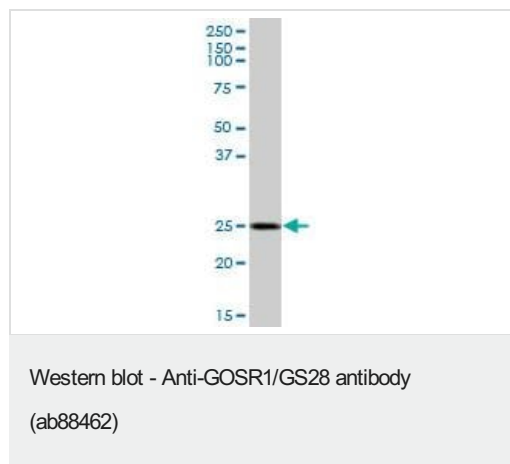
アプリケーション	Abreviews	特記事項
WB		Use a concentration of 1 - 5 µg/ml. Predicted molecular weight: 29 kDa.
ICC/IF		Use a concentration of 10 µg/ml.

ターゲット情報

関連性 GOSR1/GS28 is a trafficking membrane protein which transports proteins among the endoplasmic reticulum and the Golgi and between Golgi compartments; it is considered an essential component of the Golgi SNAP receptor (SNARE) complex.

細胞内局在 Cell Membrane, Endoplasmic reticulum and Golgi Apparatus

画像



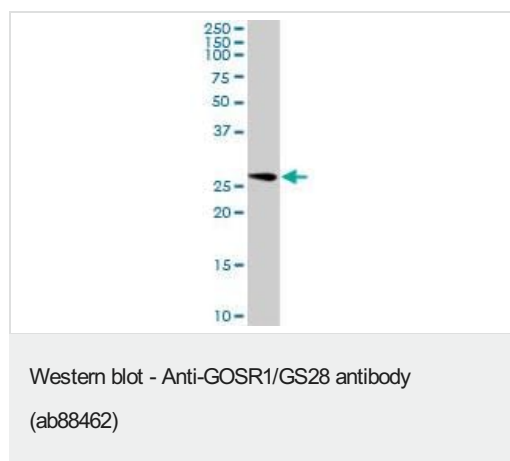
Anti-GOSR1/GS28 antibody (ab88462) at 5 µg/ml + Human liver lysate at 25 µg

Secondary

Goat Anti-Mouse IgG at 1/2500 dilution

Predicted band size: 29 kDa

Observed band size: 25 kDa



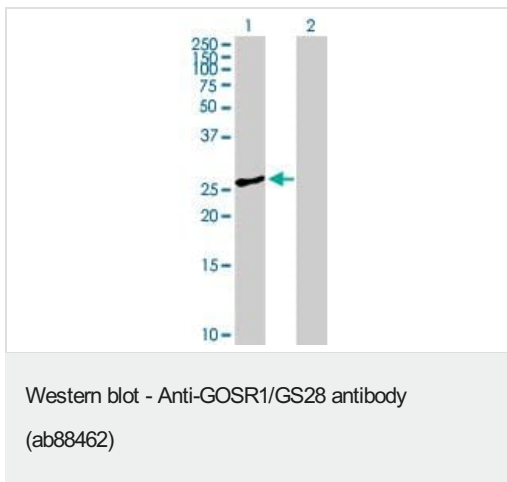
Anti-GOSR1/GS28 antibody (ab88462) at 5 µg/ml + A-431 cell lysate at 25 µg

Secondary

Goat Anti-Mouse IgG at 1/2500 dilution

Predicted band size: 29 kDa

Observed band size: 29 kDa



All lanes : Anti-GOSR1/GS28 antibody (ab88462) at 5 µg/ml

Lane 1 : Transfected 293T cell line

Lane 2 : Non-transfected cell line

Lysates/proteins at 25 µg per lane.

Secondary

All lanes : Goat Anti-Mouse IgG at 1/2500 dilution

Predicted band size: 29 kDa

Observed band size: 27 kDa



Immunofluorescence of ab88462 (used at 10µg/ml) to GOSR1/GS28 on HeLa cells.

Please note: All products are "FOR RESEARCH USE ONLY. NOT FOR USE IN DIAGNOSTIC PROCEDURES"

Our Abpromise to you: Quality guaranteed and expert technical support

- Replacement or refund for products not performing as stated on the datasheet
- Valid for 12 months from date of delivery
- Response to your inquiry within 24 hours
- We provide support in Chinese, English, French, German, Japanese and Spanish
- Extensive multi-media technical resources to help you
- We investigate all quality concerns to ensure our products perform to the highest standards

If the product does not perform as described on this datasheet, we will offer a refund or replacement. For full details of the Abpromise, please visit <https://www.abcam.co.jp/abpromise> or contact our technical team.

Terms and conditions

- Guarantee only valid for products bought direct from Abcam or one of our authorized distributors