

Anti-GOLPH2 antibody [OTI6C9] ab119800

KO 評価済

画像数 11

製品の概要

製品名	Anti-GOLPH2 antibody [OTI6C9]
製品の詳細	Mouse monoclonal [OTI6C9] to GOLPH2
由来種	Mouse
アプリケーション	適用あり: WB, IHC-P, ICC/IF, Flow Cyt (Intra)
種交差性	交差種: Human, African green monkey
免疫原	Recombinant full length protein corresponding to Human GOLPH2 aa 1 to the C-terminus. Produced in HEK-293T cells (NP_808800). Database link: Q8NBJ4
ポジティブ・コントロール	WB: HEK-293T cell lysate transfected with pCMV-ENTRY GOLPH2 cDNA; HeLa, A549 and COS-7 cell extracts. IHC-P: Human ovary adenocarcinoma, thyroid carcinoma, endometrium, endometrium adenocarcinoma, prostate and bladder carcinoma tissues. ICC/IF: COS-7 cells transiently transfected by pCMV6-ENTRY GOLPH2. Flow Cyt (Intra): HeLa cells.
特記事項	<p>The clone number has been updated from 6C9 to OTI6C9, both clone numbers name the same clone.</p> <p>The Life Science industry has been in the grips of a reproducibility crisis for a number of years. Abcam is leading the way in addressing this with our range of recombinant monoclonal antibodies and knockout edited cell lines for gold-standard validation. Please check that this product meets your needs before purchasing.</p> <p>If you have any questions, special requirements or concerns, please send us an inquiry and/or contact our Support team ahead of purchase. Recommended alternatives for this product can be found below, along with publications, customer reviews and Q&As</p>
製品の特性	
製品の状態	Liquid
保存方法	Shipped at 4°C. Store at +4°C short term (1-2 weeks). Upon delivery aliquot. Store at -20°C. Avoid freeze / thaw cycle.
バッファー	pH: 7.30 Preservative: 0.02% Sodium azide

 [Run BLAST with](#)

 [Run BLAST with](#)

	Constituents: PBS, 1% BSA, 50% Glycerol
精製度	Affinity purified
特記事項(精製)	Purified from cell culture supernatant by affinity chromatography.
ポリ/モノ	モノクローナル
クローン名	OT16C9
アイソタイプ	IgG1

アプリケーション

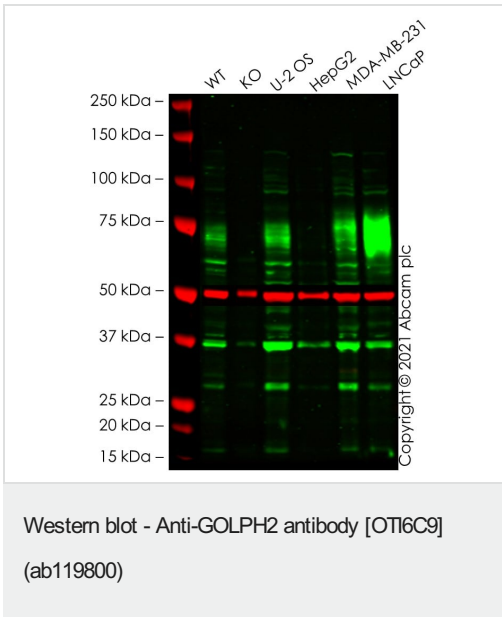
The Abpromise guarantee **Abpromise保証は、次のテスト済みアプリケーションにおけるab119800の使用に適用されず**
 アプリケーションノートには、推奨の開始希釈率がありますが、適切な希釈率につきましてはご検討ください。

アプリケーション	Abreviews	特記事項
WB		1/500 - 1/2000. Predicted molecular weight: 45 kDa.
IHC-P		1/150.
ICC/IF		1/100.
Flow Cyt (Intra)		Use 1µg for 10 ⁶ cells. ab170190 - Mouse monoclonal IgG1, is suitable for use as an isotype control with this antibody.

ターゲット情報

機能	Unknown. Cellular response protein to viral infection.
組織特異性	Widely expressed. Highly expressed in colon, prostate, trachea and stomach. Expressed at lower level in testis, muscle, lymphoid tissues, white blood cells and spleen. Predominantly expressed by cells of the epithelial lineage. Expressed at low level in normal liver. Expression significantly increases in virus (HBV, HCV) infected liver. Expression does not increase in liver disease due to non-viral causes (alcohol-induced liver disease, autoimmune hepatitis). Increased expression in hepatocytes appears to be a general feature of advanced liver disease. In liver tissue from patients with adult giant-cell hepatitis (GCH), it is strongly expressed in hepatocyte-derived syncytial giant cells. Constitutively expressed by biliary epithelial cells but not by hepatocytes.
配列類似性	Belongs to the GOLM1/CASC4 family.
翻訳後修飾	Glycosylated. Phosphorylation sites are present in the extracellular medium.
細胞内局在	Golgi apparatus > cis-Golgi network membrane. Early Golgi. Cycles via the cell surface and endosomes upon luminal pH disruption.

画像



All lanes : Anti-GOLPH2 antibody [OTI6C9] (ab119800) at 1/500 dilution

Lane 1 : Wild-type HEK-293T cell lysate at 10 µg

Lane 2 : GOLM1 knockout HEK-293T cell lysate at 10 µg

Lane 3 : U-2 OS cell lysate at 20 µg

Lane 4 : HepG2 cell lysate at 20 µg

Lane 5 : MDA-MB-231 cell lysate at 20 µg

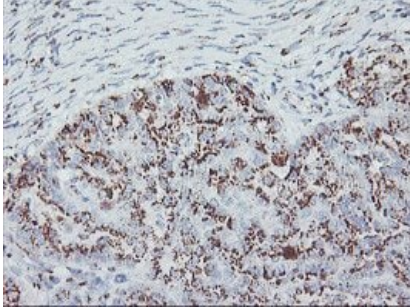
Lane 6 : LNCaP cell lysate at 20 µg

Performed under reducing conditions.

Predicted band size: 45 kDa

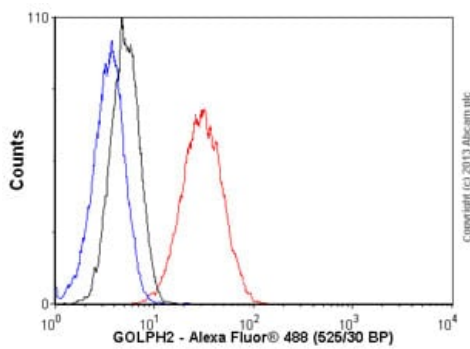
Observed band size: 70-75 kDa

False colour image of Western blot: Anti-GOLPH2 antibody [OTI6C9] staining at 1/500 dilution, shown in green; Rabbit anti-alpha Tubulin antibody [EP1332Y] ([ab52866](#)) loading control staining at 1/20000 dilution, shown in red. In Western blot, ab119800 was shown to bind specifically to GOLPH2. A band was observed at 70-75 kDa in wild-type HEK-293T cell lysates with no signal observed at this size in GOLM1 knockout cell line [ab266505](#) (knockout cell lysate [ab257976](#)). To generate this image, wild-type and GOLM1 knockout HEK-293T cell lysates were analysed. First, samples were run on an SDS-PAGE gel then transferred onto a nitrocellulose membrane. Membranes were blocked in 5% milk in TBS-0.1 % Tween[®] 20 (TBS-T) before incubation with primary antibodies overnight at 4°C. Blots were washed four times in TBS-T, incubated with secondary antibodies for 1 h at room temperature, washed again four times then imaged. Secondary antibodies used were Goat anti-Mouse IgG H&L (IRDye[®] 800CW) preabsorbed ([ab216772](#)) and Goat anti-Rabbit IgG H&L (IRDye[®] 680RD) preabsorbed ([ab216777](#)) at 1/20000 dilution.



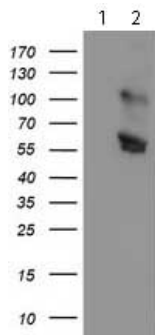
Immunohistochemistry (Formalin/PFA-fixed paraffin-embedded sections) - Anti-GOLPH2 antibody [OTI6C9] (ab119800)

Paraffin-embedded human ovary adenocarcinoma tissue stained for GOLPH2 using ab119800 at 1/150 dilution in immunohistochemical analysis.



Flow Cytometry (Intracellular) - Anti-GOLPH2 antibody [OTI6C9] (ab119800)

Overlay histogram showing HeLa cells stained with ab119800 (red line). The cells were fixed with 80% methanol (5 min) and then permeabilized with 0.1% PBS-Tween for 20 min. The cells were then incubated in 1x PBS / 10% normal goat serum / 0.3M glycine to block non-specific protein-protein interactions followed by the antibody (ab119800, 1µg/1x10⁶ cells) for 30 min at 22°C. The secondary antibody used was Alexa Fluor® 488 goat anti-mouse IgG (H&L) ([ab150113](#)) at 1/2000 dilution for 30 min at 22°C. Isotype control antibody (black line) was mouse IgG1 [ICIGG1] ([ab91353](#), 1µg/1x10⁶ cells) used under the same conditions. Unlabelled sample (blue line) was also used as a control. Acquisition of >5,000 events were collected using a 20mW Argon ion laser (488nm) and 525/30 bandpass filter.



Western blot - Anti-GOLPH2 antibody [OTI6C9] (ab119800)

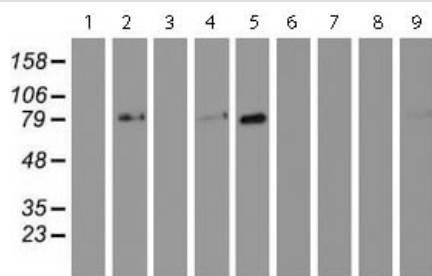
All lanes : Anti-GOLPH2 antibody [OTI6C9] (ab119800) at 1/500 dilution

Lane 1 : HEK293T cell lysate transfected with pCMV6-ENTRY control

Lane 2 : HEK293T cell lysate transfected with pCMV6-ENTRY GOLPH2

Lysates/proteins at 5 µg per lane.

Predicted band size: 45 kDa



Western blot - Anti-GOLPH2 antibody [OTI6C9] (ab119800)

All lanes : Anti-GOLPH2 antibody [OTI6C9] (ab119800) at 1/500 dilution

Lane 1 : HepG2 (human liver hepatocellular carcinoma cell line) cell extract

Lane 2 : HeLa (human epithelial cell line from cervix adenocarcinoma) cell extract

Lane 3 : SVT2 cell extract

Lane 4 : A549 (human lung carcinoma cell line) cell extract

Lane 5 : COS-7 (african green monkey kidney fibroblast-like cell line) cell extract

Lane 6 : Jurkat (human T cell leukemia cell line from peripheral blood) cell extract

Lane 7 : MDCK (canine kidney cell line) cell extract

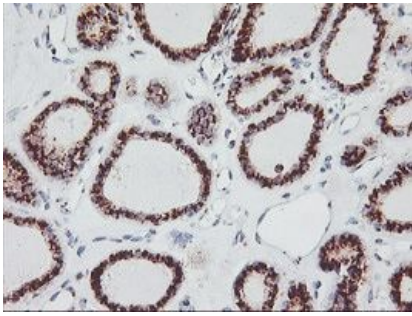
Lane 8 : PC-12 (rat adrenal gland pheochromocytoma cell line) cell extract

Lane 9 : MCF7 (human breast adenocarcinoma cell line) cell extract

Lysates/proteins at 35 µg per lane.

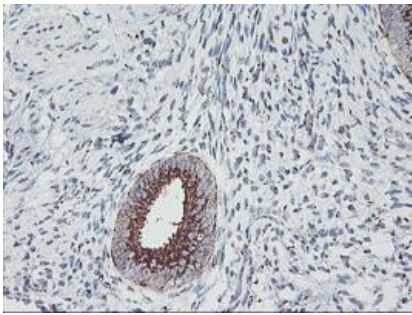
Predicted band size: 45 kDa

HEK293T cell lysates were generated from transient transfection of the cDNA clone (RC200086)



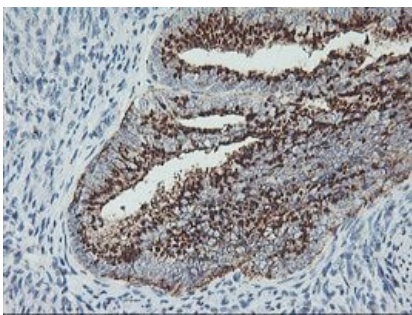
Immunohistochemistry (Formalin/PFA-fixed paraffin-embedded sections) - Anti-GOLPH2 antibody [OTI6C9] (ab119800)

Paraffin-embedded human thyroid carcinoma tissue stained for GOLPH2 using ab119800 at 1/150 dilution in immunohistochemical analysis.



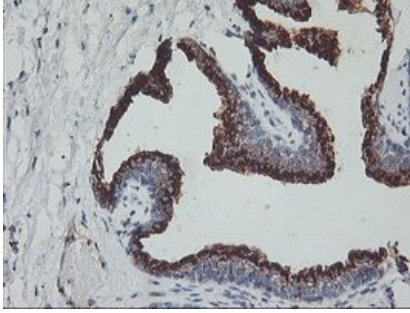
Immunohistochemistry (Formalin/PFA-fixed paraffin-embedded sections) - Anti-GOLPH2 antibody [OTI6C9] (ab119800)

Paraffin-embedded human endometrium tissue stained for GOLPH2 using ab119800 at 1/150 dilution in immunohistochemical analysis.



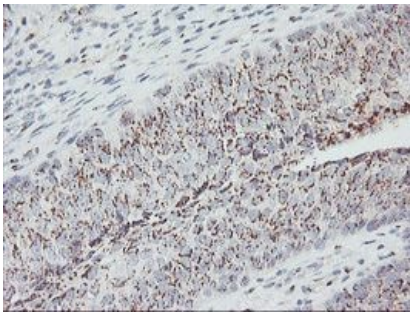
Immunohistochemistry (Formalin/PFA-fixed paraffin-embedded sections) - Anti-GOLPH2 antibody [OTI6C9] (ab119800)

Paraffin-embedded human endometrium adenocarcinoma tissue stained for GOLPH2 using ab119800 at 1/150 dilution in immunohistochemical analysis.



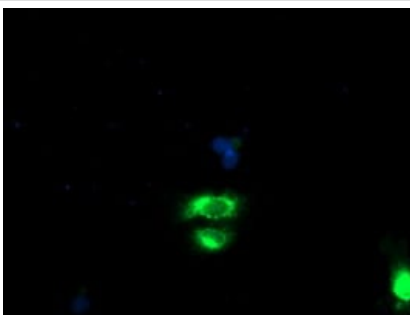
Paraffin-embedded human prostate tissue stained for GOLPH2 using ab119800 at 1/150 dilution in immunohistochemical analysis.

Immunohistochemistry (Formalin/PFA-fixed paraffin-embedded sections) - Anti-GOLPH2 antibody [OTI6C9] (ab119800)



Paraffin-embedded human bladder carcinoma tissue stained for GOLPH2 using ab119800 at 1/150 dilution in immunohistochemical analysis.

Immunohistochemistry (Formalin/PFA-fixed paraffin-embedded sections) - Anti-GOLPH2 antibody [OTI6C9] (ab119800)



COS-7 (african green monkey kidney fibroblast-like cell line) cells transiently transfected by pCMV6-ENTRY GOLPH2 stained for GOLPH2 (green) using ab119800 at 1/100 dilution in ICC/IF.

Immunocytochemistry/ Immunofluorescence - Anti-GOLPH2 antibody [OTI6C9] (ab119800)

Please note: All products are "FOR RESEARCH USE ONLY. NOT FOR USE IN DIAGNOSTIC PROCEDURES"

Our Abpromise to you: Quality guaranteed and expert technical support

- Replacement or refund for products not performing as stated on the datasheet
- Valid for 12 months from date of delivery
- Response to your inquiry within 24 hours

- We provide support in Chinese, English, French, German, Japanese and Spanish
- Extensive multi-media technical resources to help you
- We investigate all quality concerns to ensure our products perform to the highest standards

If the product does not perform as described on this datasheet, we will offer a refund or replacement. For full details of the Abpromise, please visit <https://www.abcam.co.jp/abpromise> or contact our technical team.

Terms and conditions

- Guarantee only valid for products bought direct from Abcam or one of our authorized distributors