

### Anti-GNAT1 antibody ab74059

★★★★★ [1 Abreviews](#) [10 References](#) [画像数 1](#)

#### 製品の概要

製品名	Anti-GNAT1 antibody
製品の詳細	Rabbit polyclonal to GNAT1
由来種	Rabbit
アプリケーション	<b>適用あり:</b> WB
種交差性	<b>交差種:</b> Human
免疫原	Synthesized peptide derived from the internal of human Transducin alpha
特記事項	<p>The Life Science industry has been in the grips of a reproducibility crisis for a number of years. Abcam is leading the way in addressing this with our range of recombinant monoclonal antibodies and knockout edited cell lines for gold-standard validation. Please check that this product meets your needs before purchasing.</p> <p>If you have any questions, special requirements or concerns, please send us an inquiry and/or contact our Support team ahead of purchase. Recommended alternatives for this product can be found below, along with publications, customer reviews and Q&amp;As</p>

#### 製品の特性

製品の状態	Liquid
保存方法	Shipped at 4°C. Upon delivery aliquot and store at -20°C. Avoid freeze / thaw cycles.
バッファー	<p>pH: 7.40</p> <p>Preservative: 0.02% Sodium azide</p> <p>Constituents: 50% Glycerol, 0.87% Sodium chloride, PBS</p>
精製度	Immunogen affinity purified
ポリ/モノ	ポリクローナル
アイソタイプ	IgG

#### アプリケーション

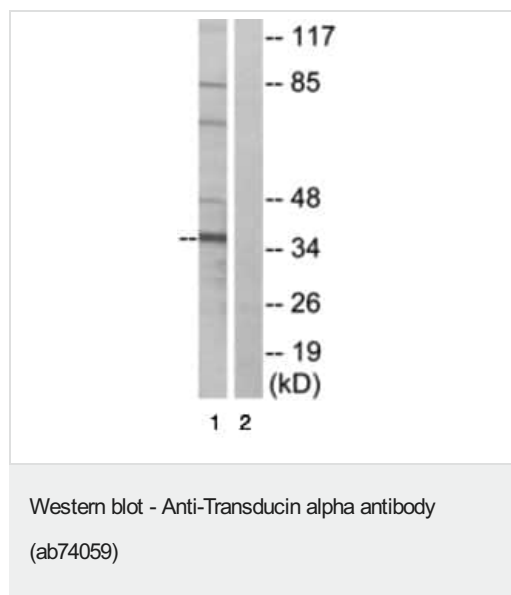
**The Abpromise guarantee**      **Abpromise保証は、次のテスト済みアプリケーションにおけるab74059の使用に適用されます**  
 アプリケーションノートには、推奨の開始希釈率がありますが、適切な希釈率につきましてはご検討ください。

アプリケーション	Abreviews	特記事項
WB		1/500 - 1/1000. Predicted molecular weight: 40 kDa.

## ターゲット情報

機能	Guanine nucleotide-binding proteins (G proteins) are involved as modulators or transducers in various transmembrane signaling systems. Transducin is an amplifier and one of the transducers of a visual impulse that performs the coupling between rhodopsin and cGMP-phosphodiesterase.
組織特異性	Rod. Predominantly expressed in the retina followed by the ciliary body, iris and retinal pigment epithelium.
関連疾患	Night blindness, congenital stationary, autosomal dominant 3 Night blindness, congenital stationary, 1C
配列類似性	Belongs to the G-alpha family. G(i/o/t/z) subfamily.
発生段階	Expressed at approximately postnatal day 7.

## 画像



**All lanes :** Anti-GNAT1 antibody (ab74059) at 1/500 dilution

**Lane 1 :** extracts from COLO cells

**Lane 2 :** extracts from COLO cells with immunizing peptide at 10 µg

Lysates/proteins at 30 µg per lane.

**Predicted band size:** 40 kDa

**Observed band size:** 40 kDa

**Additional bands at:** 48 kDa, 70 kDa, 85 kDa. We are unsure as to the identity of these extra bands.

**Please note:** All products are "FOR RESEARCH USE ONLY. NOT FOR USE IN DIAGNOSTIC PROCEDURES"

## Our Abpromise to you: Quality guaranteed and expert technical support

- Replacement or refund for products not performing as stated on the datasheet
- Valid for 12 months from date of delivery
- Response to your inquiry within 24 hours
- We provide support in Chinese, English, French, German, Japanese and Spanish
- Extensive multi-media technical resources to help you

- We investigate all quality concerns to ensure our products perform to the highest standards

If the product does not perform as described on this datasheet, we will offer a refund or replacement. For full details of the Abpromise, please visit <https://www.abcam.co.jp/abpromise> or contact our technical team.

### **Terms and conditions**

---

- Guarantee only valid for products bought direct from Abcam or one of our authorized distributors