

Anti-Glypican 4 antibody ab118911

★★★★★ **3 Abreviews** [画像数 3](#)

製品の概要

製品名	Anti-Glypican 4 antibody
製品の詳細	Rabbit polyclonal to Glypican 4
由来種	Rabbit
アプリケーション	適用あり: IHC-P
種交差性	交差種: Human
免疫原	Synthetic peptide conjugated to KLH, corresponding to the C-terminal domain of Human Glypican 4.
ポジティブ・コントロール	Human Liver and Human Pancreas tissues.
特記事項	<p>The Life Science industry has been in the grips of a reproducibility crisis for a number of years. Abcam is leading the way in addressing this with our range of recombinant monoclonal antibodies and knockout edited cell lines for gold-standard validation. Please check that this product meets your needs before purchasing.</p> <p>If you have any questions, special requirements or concerns, please send us an inquiry and/or contact our Support team ahead of purchase. Recommended alternatives for this product can be found below, along with publications, customer reviews and Q&As</p>

製品の特性

製品の状態	Liquid
保存方法	Shipped at 4°C. Upon delivery aliquot and store at -20°C. Avoid freeze / thaw cycles.
バッファー	pH: 7.4 Preservative: 0.1% Sodium azide Constituent: 99% PBS
精製度	Protein A purified
ポリ/モノ	ポリクローナル
アイソタイプ	IgG

アプリケーション

The Abpromise guarantee

Abpromise保証は、 次のテスト済みアプリケーションにおけるab118911の使用に適用されます

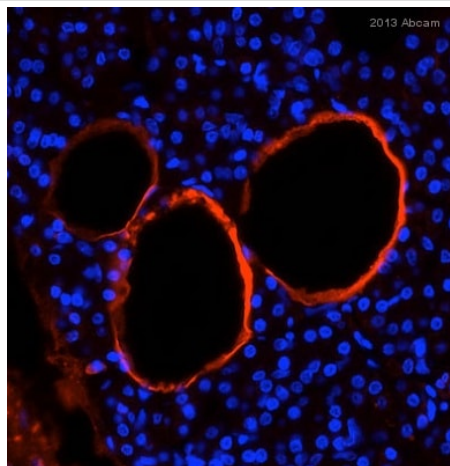
アプリケーションノートには、推奨の開始希釈率がありますが、適切な希釈率につきましてはご確認ください。

アプリケーション	Abreviews	特記事項
IHC-P	★★★★★ (3)	Use a concentration of 15 - 20 µg/ml.

ターゲット情報

機能	Cell surface proteoglycan that bears heparan sulfate. May be involved in the development of kidney tubules and of the central nervous system.
配列類似性	Belongs to the glypican family.
細胞内局在	Cell membrane and Secreted > extracellular space.

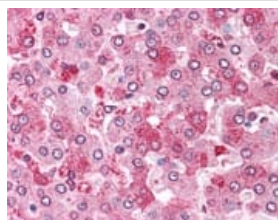
画像



Immunohistochemistry (Formalin/PFA-fixed paraffin-embedded sections) - Anti-Glypican 4 antibody (ab118911)

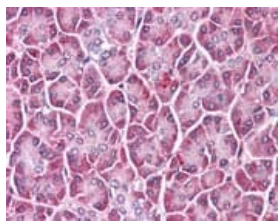
This image is courtesy of an Abreview submitted by Steffen Rickelt

ab118911 staining Glypican in Mouse pancreas tissue sections by Immunohistochemistry (IHC-P - paraformaldehyde-fixed, paraffin-embedded sections). Tissue was fixed with formaldehyde and blocked with 5% milk for 30 minutes at room temperature; antigen retrieval was by heat mediation in Tris pH 9.0. Samples were incubated with primary antibody (1/100 in PBS) for 16 hours at 4°C. An Alexa Fluor® 594-conjugated Goat anti-rabbit IgG polyclonal (1/500) was used as the secondary antibody. Blue - nuclei (DAPI)



Immunohistochemistry (Formalin/PFA-fixed paraffin-embedded sections) - Anti-Glypican 4 antibody (ab118911)

ab118911, at 20 µg/ml, staining Glypican 4 in Formalin-fixed, Paraffin-embedded Human Liver tissue by Immunohistochemistry.



ab118911, at 20 µg/ml, staining Glypican 4 in Formalin-fixed, Paraffin-embedded Human Pancreas tissue by Immunohistochemistry.

Immunohistochemistry (Formalin/PFA-fixed paraffin-embedded sections) - Anti-Glypican 4 antibody (ab118911)

Please note: All products are "FOR RESEARCH USE ONLY. NOT FOR USE IN DIAGNOSTIC PROCEDURES"

Our Abpromise to you: Quality guaranteed and expert technical support

- Replacement or refund for products not performing as stated on the datasheet
- Valid for 12 months from date of delivery
- Response to your inquiry within 24 hours
- We provide support in Chinese, English, French, German, Japanese and Spanish
- Extensive multi-media technical resources to help you
- We investigate all quality concerns to ensure our products perform to the highest standards

If the product does not perform as described on this datasheet, we will offer a refund or replacement. For full details of the Abpromise, please visit <https://www.abcam.co.jp/abpromise> or contact our technical team.

Terms and conditions

- Guarantee only valid for products bought direct from Abcam or one of our authorized distributors