

### Anti-Glypican 3 antibody [SP86] ab95363

KO 評価済 リコンビナント RabMAb

6 References 画像数 10

#### 製品の概要

製品名	Anti-Glypican 3 antibody [SP86]
製品の詳細	Rabbit monoclonal [SP86] to Glypican 3
由来種	Rabbit
アプリケーション	適用あり: ICC/IF, Flow Cyt, WB, IHC-P
種交差性	交差種: Human
免疫原	Synthetic peptide within Human Glypican 3 aa 500 to the C-terminus (C terminal). The exact sequence is proprietary. Database link: <a href="#">P51654</a>
ポジティブ・コントロール	Human liver cancer tissueThis antibody gave a positive result when used in the following formaldehyde fixed cell lines: HepG2. ICC/IF: HepG2 Flow Cyt: HepG2, Hap1 cells
特記事項	<p>This product is a recombinant monoclonal antibody, which offers several advantages including:</p> <ul style="list-style-type: none"> <li>- High batch-to-batch consistency and reproducibility</li> <li>- Improved sensitivity and specificity</li> <li>- Long-term security of supply</li> <li>- Animal-free production</li> </ul> <p>For more information <a href="#">see here</a>.</p> <p>Our RabMAb<sup>®</sup> technology is a patented hybridoma-based technology for making rabbit monoclonal antibodies. For details on our patents, please refer to <a href="#">RabMAb<sup>®</sup> patents</a>.</p> <p><b>This product is FOR RESEARCH USE ONLY. For commercial use, please contact <a href="mailto:partnerships@abcam.com">partnerships@abcam.com</a>.</b></p>

#### 製品の特性

製品の状態	Liquid
保存方法	Shipped at 4°C. Upon delivery aliquot and store at -20°C. Avoid freeze / thaw cycles.
バッファー	pH: 7.20 Preservative: 0.1% Sodium azide Constituents: 1% BSA, PBS
精製度	Protein A purified

ポリ/モノ	モノクローナル
クローン名	SP86
アイソタイプ	IgG

## アプリケーション

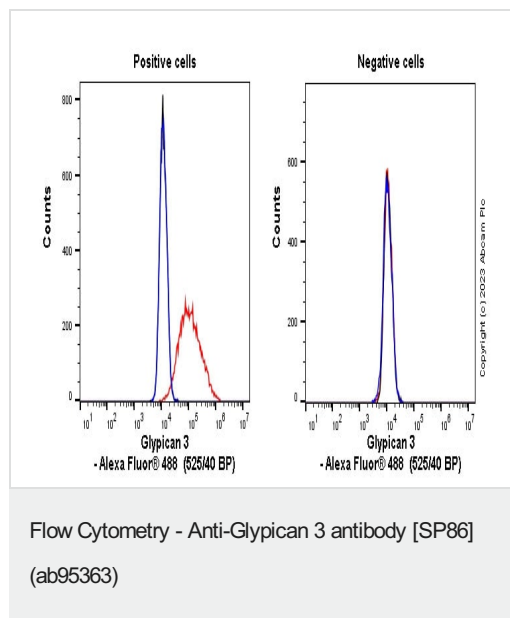
**The Abpromise guarantee** Abpromise保証は、次のテスト済みアプリケーションにおけるab95363の使用に適用されます  
 アプリケーションノートには、推奨の開始希釈率がありますが、適切な希釈率につきましてはご検討ください。

アプリケーション	Abreviews	特記事項
ICC/IF		1/200.
Flow Cyt		1/80. <b>ab172730</b> - Rabbit monoclonal IgG, is suitable for use as an isotype control with this antibody.
WB		Use at an assay dependent concentration. Predicted molecular weight: 66 kDa.
IHC-P		1/100. Perform heat mediated antigen retrieval (boil tissue section in 10mM citrate buffer, pH 6.0 for 10 min followed by cooling at RT for 20 min).

## ターゲット情報

機能	Cell surface proteoglycan that bears heparan sulfate. Inhibits the dipeptidyl peptidase activity of DPP4. May be involved in the suppression/modulation of growth in the predominantly mesodermal tissues and organs. May play a role in the modulation of IGF2 interactions with its receptor and thereby modulate its function. May regulate growth and tumor predisposition.
組織特異性	Highly expressed in lung, liver and kidney.
関連疾患	Defects in GPC3 are the cause of Simpson-Golabi-Behmel syndrome type 1 (SGBS1) [MIM:312870]; also known as Simpson dysmorphia syndrome (SDYS). SGBS is a condition characterized by pre- and postnatal overgrowth (gigantism) with visceral and skeletal anomalies.
配列類似性	Belongs to the glypican family.
細胞内局在	Cell membrane and Secreted > extracellular space.

## 画像

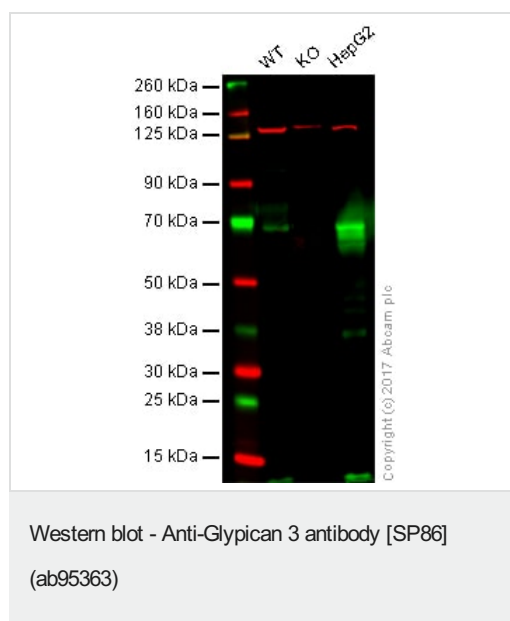


Flow cytometry overlay histogram showing left wild-type Hap1 positive cells and right negative GPC3 knockout Hap1 stained with ab95363 (red line). The cells were incubated in 1x PBS containing 10% normal goat serum to block non-specific protein-protein interaction followed by the antibody (ab95363) ( $1 \times 10^6$  in 100 $\mu$ l at 5.0  $\mu$ g/ml (1/396)) for 30min on ice.

The secondary antibody Goat Anti-Rabbit IgG H&L (Alexa Fluor® 488) preadsorbed was incubated at 1/4000 for 30min on ice

Isotype control antibody Recombinant Rabbit IgG, monoclonal [EPR25A] - Isotype Control (black line) was used at the same concentration and conditions as the primary antibody. Unlabelled sample was also used as a control (blue line).

Acquisition of >5000 events were collected using a 50 mW Blue laser (488nm) and 525/40 bandpass filter.



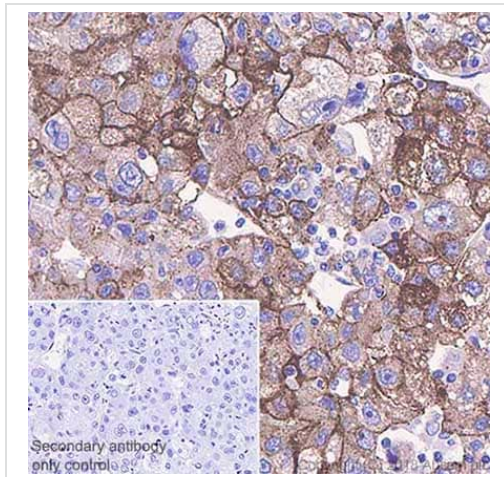
**Lane 1:** Wild-type HAP1 whole cell lysate (20  $\mu$ g)

**Lane 2:** GPC3 knockout HAP1 whole cell lysate (20  $\mu$ g)

**Lane 3:** HepG2 whole cell lysate (20  $\mu$ g)

**Lanes 1 - 3:** Merged signal (red and green). Green - ab95363 observed at 70 kDa. Red - loading control, **ab130007**, observed at 125kDa.

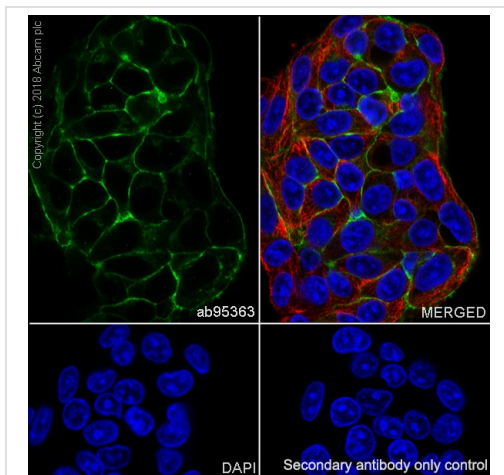
ab95363 was shown to specifically react with Glypican 3 in wild-type HAP1 cells as signal was lost in GPC3 knockout cells. Wild-type and GPC3 knockout samples were subjected to SDS-PAGE. ab95363 and **ab130007** (Mouse anti-vinculin loading control) were incubated overnight at 4°C at 1/1000 and 1/20000 dilution respectively. Blots were developed with Goat anti-Rabbit IgG H&L (IRDye® 800CW) preabsorbed **ab216773** and Goat anti-Mouse IgG H&L (IRDye® 680RD) preabsorbed **ab216776** secondary antibodies at 1/10000 dilution for 1 hour at room temperature before imaging.



Immunohistochemistry (Formalin/PFA-fixed paraffin-embedded sections) - Anti-Glypican 3 antibody [SP86] (ab95363)

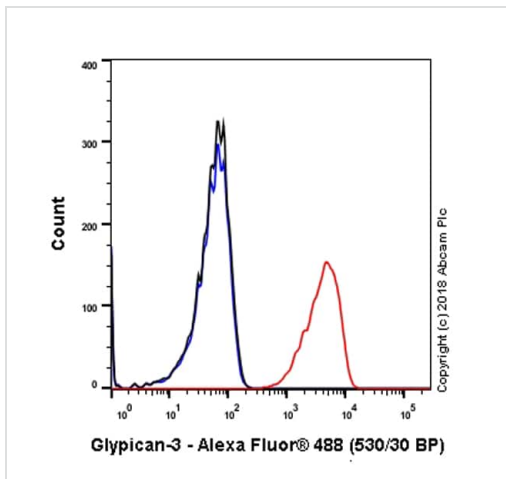
Immunohistochemistry (Formalin/PFA-fixed paraffin-embedded sections) analysis of Human hepatocellular carcinoma tissue sections labeling Glypican 3 with ab95363 at 1:100 dilution (4.66 µg/ml). Heat mediated antigen retrieval with sodium citrate buffer (pH 6.0, epitope retrieval solution 1) for 10mins. Rabbit specific IHC polymer detection kit HRP/DAB (**ab209101**) was used as the secondary antibody. Hematoxylin was used as a counterstain. Positive staining on human hepatocellular carcinoma, performed on a Leica Biosystems BOND<sup>TM</sup> RX instrument.

The section was incubated with ab95363 for 30 mins at room temperature.



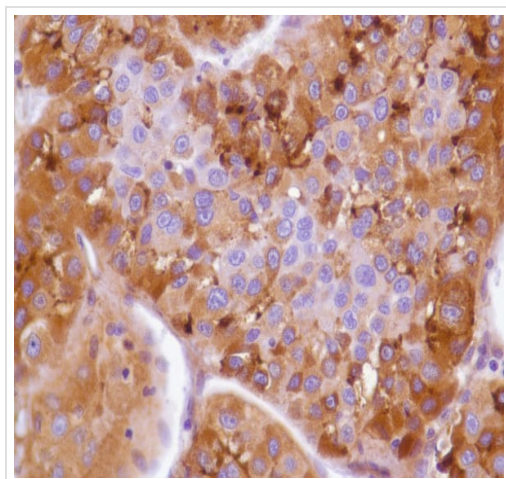
Immunocytochemistry/ Immunofluorescence - Anti-Glypican 3 antibody [SP86] (ab95363)

Immunocytochemistry/ Immunofluorescence analysis of HepG2 (human hepatocellular carcinoma epithelial cell) cells labeling Glypican 3 with purified ab95363 at 1/200 (2.3 µg/ml). Cells were fixed in 100% Methanol and permeabilized with None. Cells were counterstained with Ab195889 Anti-alpha Tubulin antibody [DM1A] - Microtubule Marker (Alexa Fluor<sup>®</sup> 594) 1/200 (2.5 µg/ml). Goat anti rabbit IgG (Alexa Fluor<sup>®</sup> 488, **ab150077**) was used as the secondary antibody at 1/1000 (2 µg/ml) dilution. DAPI was used as nuclear counterstain. PBS instead of the primary antibody was used as the secondary antibody only control.



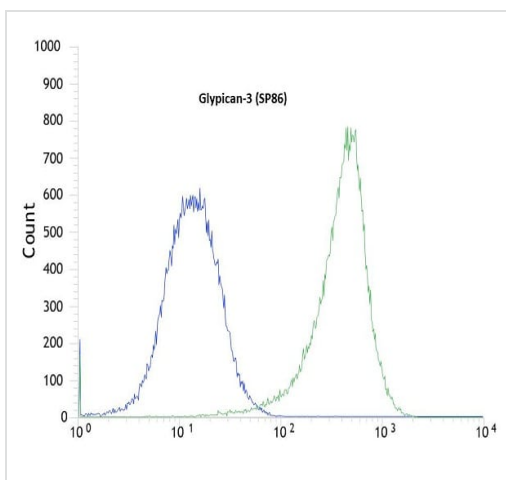
Flow Cytometry - Anti-Glypican 3 antibody [SP86]  
(ab95363)

Flow cytometry analysis of HepG2 (human hepatocellular carcinoma) labeling Glypican 3 with purified ab95363 at 1/80 dilution (5.825 µg/ml) (red). Goat anti rabbit IgG (Alexa Fluor® 488, **ab150077**) at 1/2000 dilution was used as a secondary antibody. Isotype control - Rabbit monoclonal IgG (**ab172730**) (Black). Unlabeled control -Unlabelled cells (blue).



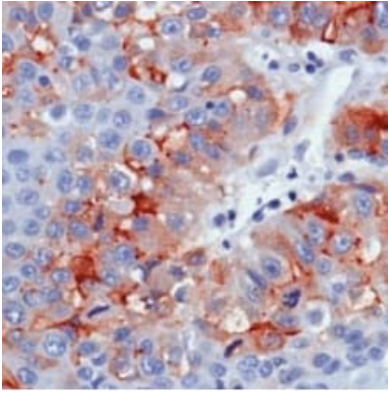
Immunohistochemistry (Formalin/PFA-fixed paraffin-embedded sections) - Anti-Glypican 3 antibody [SP86] (ab95363)

Immunohistochemical staining of human liver hepatocellular carcinoma with ab95363.



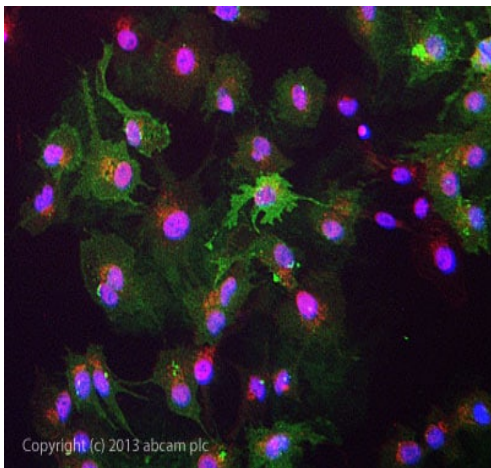
Flow Cytometry - Anti-Glypican 3 antibody [SP86]  
(ab95363)

Flow cytometric analysis of rabbit anti-Glypican 3 (SP86) antibody **ab98363** (1/100) in HEPG2 cells (green) compared to negative control of rabbit IgG (blue).



Immunohistochemistry (Formalin/PFA-fixed paraffin-embedded sections) - Anti-Glypican 3 antibody [SP86] (ab95363)

ab95363, at 1/100 dilution, staining Glypican 3 in formalin-fixed, paraffin-embedded Human liver cancer tissue by Immunohistochemistry.



Immunocytochemistry/ Immunofluorescence - Anti-Glypican 3 antibody [SP86] (ab95363)

ICC/IF image of ab95363 stained HepG2 cells. The cells were 4% formaldehyde fixed (10 min) and then incubated in 1%BSA / 10% normal goat serum / 0.3M glycine in 0.1% PBS-Tween for 1h to permeabilise the cells and block non-specific protein-protein interactions. The cells were then incubated with the antibody ab95363 at 5µg/ml overnight at +4°C. The secondary antibody (green) was DyLight® 488 goat anti- rabbit ([ab96899](#)) IgG (H+L) used at a 1/250 dilution for 1h. Alexa Fluor® 594 WGA was used to label plasma membranes (red) at a 1/200 dilution for 1h. DAPI was used to stain the cell nuclei (blue) at a concentration of 1.43µM.

### Why choose a recombinant antibody?



**Research with confidence**  
Consistent and reproducible results



**Long-term and scalable supply**  
Recombinant technology



**Success from the first experiment**  
Confirmed specificity



**Ethical standards compliant**  
Animal-free production

Anti-Glypican 3 antibody [SP86] (ab95363)

**Please note:** All products are "FOR RESEARCH USE ONLY. NOT FOR USE IN DIAGNOSTIC PROCEDURES"

### **Our Abpromise to you: Quality guaranteed and expert technical support**

---

- Replacement or refund for products not performing as stated on the datasheet
- Valid for 12 months from date of delivery
- Response to your inquiry within 24 hours
  
- We provide support in Chinese, English, French, German, Japanese and Spanish
- Extensive multi-media technical resources to help you
- We investigate all quality concerns to ensure our products perform to the highest standards

If the product does not perform as described on this datasheet, we will offer a refund or replacement. For full details of the Abpromise, please visit <https://www.abcam.co.jp/abpromise> or contact our technical team.

### **Terms and conditions**

---

- Guarantee only valid for products bought direct from Abcam or one of our authorized distributors