


Anti-Glypican 1/ GPC1 antibody ab106003

[1 Abreviews](#) [2 References](#) [画像数 1](#)

製品の概要

製品名	Anti-Glypican 1/ GPC1 antibody
製品の詳細	Rabbit polyclonal to Glypican 1/ GPC1
由来種	Rabbit
アプリケーション	適用あり: WB
種交差性	交差種: Human 交差が予測される動物種: Cow, Dog, Macaque monkey, Opossum 
免疫原	A synthetic peptide corresponding to an internal region of Human Glypican 1/ GPC1
特記事項	<p>The Life Science industry has been in the grips of a reproducibility crisis for a number of years. Abcam is leading the way in addressing this with our range of recombinant monoclonal antibodies and knockout edited cell lines for gold-standard validation. Please check that this product meets your needs before purchasing.</p> <p>If you have any questions, special requirements or concerns, please send us an inquiry and/or contact our Support team ahead of purchase. Recommended alternatives for this product can be found below, along with publications, customer reviews and Q&As</p>

製品の特性

製品の状態	Liquid
保存方法	Shipped at 4°C. Store at -20°C. Stable for 12 months at -20°C.
バッファー	Preservative: 0.01% Sodium azide Constituents: 0.42% Potassium phosphate, 0.88% Sodium chloride
精製度	Protein A purified
ポリ/モノ	ポリクローナル
アイソタイプ	IgG

アプリケーション

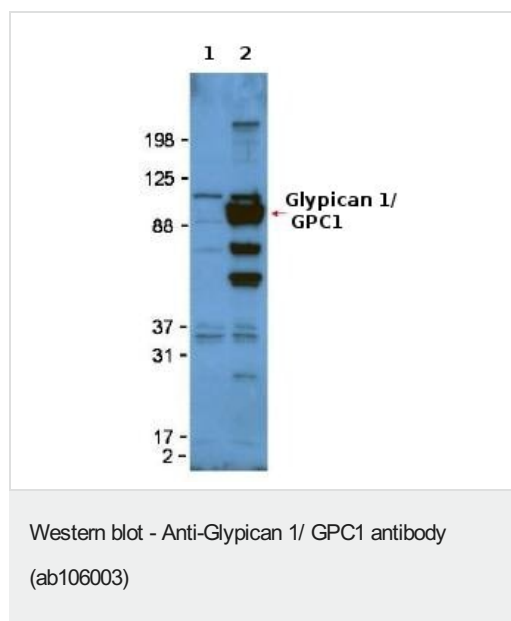
The Abpromise guarantee **Abpromise保証は、** 次のテスト済みアプリケーションにおけるab106003の使用に適用されます
 アプリケーションノートには、推奨の開始希釈率がありますが、適切な希釈率につきましてはご検討ください。

アプリケーション	Abreviews	特記事項
WB		1/500 - 1/2000. Predicted molecular weight: 62 kDa.

ターゲット情報

機能	Cell surface proteoglycan that bears heparan sulfate.
配列類似性	Belongs to the glypican family.
翻訳後修飾	This cell-associated glypican is further processed to give rise to a medium-released species.
細胞内局在	Cell membrane and Secreted > extracellular space.

画像



All lanes : Anti-Glypican 1/ GPC1 antibody (ab106003) at 1/1000 dilution

Lane 1 : Untransfected 293T whole cell lysate

Lane 2 : Glypican 1/ GPC1 transfected 293T whole cell lysate

Lysates/proteins at 50 µg per lane.

Secondary

All lanes : HRP Goat-anti-Rabbit IgG at 1/5000 dilution

Predicted band size: 62 kDa

The higher molecular weight (110kDa) of transfected Glypican 1/ GPC1 compared with the expected MW is likely due to the presence of an Fc-tag.

Please note: All products are "FOR RESEARCH USE ONLY. NOT FOR USE IN DIAGNOSTIC PROCEDURES"

Our Abpromise to you: Quality guaranteed and expert technical support

- Replacement or refund for products not performing as stated on the datasheet
- Valid for 12 months from date of delivery
- Response to your inquiry within 24 hours
- We provide support in Chinese, English, French, German, Japanese and Spanish
- Extensive multi-media technical resources to help you

- We investigate all quality concerns to ensure our products perform to the highest standards

If the product does not perform as described on this datasheet, we will offer a refund or replacement. For full details of the Abpromise, please visit <https://www.abcam.co.jp/abpromise> or contact our technical team.

Terms and conditions

- Guarantee only valid for products bought direct from Abcam or one of our authorized distributors