

Anti-Glycophorin C/GPC antibody [EPR4115] ab108619

リコンビナント **RabMAb**

3 References **画像数 2**

製品の概要

| | |
|--------------|--|
| 製品名 | Anti-Glycophorin C/GPC antibody [EPR4115] |
| 製品の詳細 | Rabbit monoclonal [EPR4115] to Glycophorin C/GPC |
| 由来種 | Rabbit |
| アプリケーション | 適用あり: WB 適用なし: IHC-P |
| 種交差性 | 交差種: Human |
| 免疫原 | Synthetic peptide. This information is proprietary to Abcam and/or its suppliers. |
| ポジティブ・コントロール | TF1 and K562 cell lysates. |
| 特記事項 | <p>This product is a recombinant monoclonal antibody, which offers several advantages including:</p> <ul style="list-style-type: none"> - High batch-to-batch consistency and reproducibility - Improved sensitivity and specificity - Long-term security of supply - Animal-free production <p>For more information see here.</p> <p>Our RabMAb[®] technology is a patented hybridoma-based technology for making rabbit monoclonal antibodies. For details on our patents, please refer to RabMAb[®] patents.</p> <p>Mouse, Rat: We have preliminary internal testing data to indicate this antibody may not react with these species. Please contact us for more information.</p> |

製品の特性

| | |
|-------|---|
| 製品の状態 | Liquid |
| 保存方法 | Shipped at 4°C. Store at -20°C. Stable for 12 months at -20°C. |
| バッファー | <p>pH: 7.20</p> <p>Preservative: 0.05% Sodium azide</p> <p>Constituents: 0.1% BSA, 40% Glycerol (glycerin, glycerine), 9.85% Tris glycine, 50% Tissue culture supernatant</p> |
| 精製度 | Tissue culture supernatant |
| ポリ/モノ | モノクローナル |

クローン名EPR4115
アイソタイプIgG

アプリケーション

The Abpromise guarantee Abpromise保証は、 次のテスト済みアプリケーションにおけるab108619の使用に適用されます
アプリケーションノートには、推奨の開始希釈率がありますが、適切な希釈率につきましてはご検討ください。

| アプリケーション | Abreviews | 特記事項 |
|----------|-----------|---|
| WB | | 1/1000 - 1/10000. Predicted molecular weight: 14 kDa. |

追加情報Is unsuitable for IHC-P.

ターゲット情報

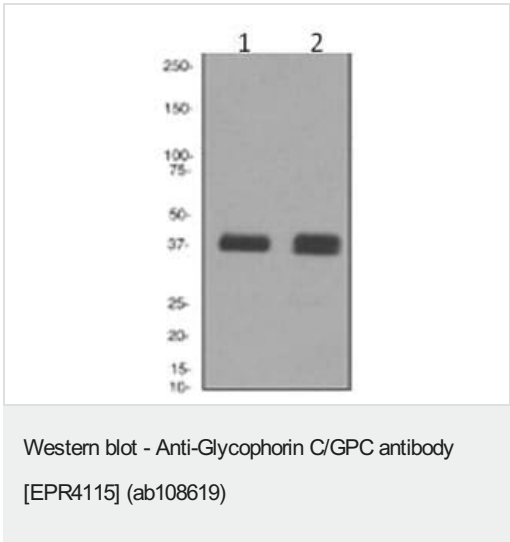
機能 This protein is a minor sialoglycoprotein in human erythrocyte membranes. The blood group Gerbich antigens and receptors for Plasmodium falciparum merozoites are most likely located within the extracellular domain. Glycophorin-C plays an important role in regulating the stability of red cells.

組織特異性 Glycophorin-C is expressed in erythrocytes. Glycophorin-D is ubiquitous.

配列類似性 Belongs to the glycophorin-C family.

細胞内局在 Cell membrane. Linked to the membrane via band 4.1.

画像



All lanes : Anti-Glycophorin C/GPC antibody [EPR4115]
(ab108619) at 1/1000 dilution

Lane 1 : TF1 cell lysates
Lane 2 : K562 cell lysates

Lysates/proteins at 10 µg per lane.

Predicted band size: 14 kDa

Why choose a recombinant antibody?



Research with confidence
Consistent and reproducible results



Long-term and scalable supply
Recombinant technology



Success from the first experiment
Confirmed specificity



Ethical standards compliant
Animal-free production

Anti-Glycophorin C/GPC antibody [EPR4115]
(ab108619)

Please note: All products are "FOR RESEARCH USE ONLY. NOT FOR USE IN DIAGNOSTIC PROCEDURES"

Our Abpromise to you: Quality guaranteed and expert technical support

- Replacement or refund for products not performing as stated on the datasheet
- Valid for 12 months from date of delivery
- Response to your inquiry within 24 hours
- We provide support in Chinese, English, French, German, Japanese and Spanish
- Extensive multi-media technical resources to help you
- We investigate all quality concerns to ensure our products perform to the highest standards

If the product does not perform as described on this datasheet, we will offer a refund or replacement. For full details of the Abpromise, please visit <https://www.abcam.co.jp/abpromise> or contact our technical team.

Terms and conditions

- Guarantee only valid for products bought direct from Abcam or one of our authorized distributors