

Anti-Glycogen synthase 1/GYS1 antibody [EP817Y] ab40810

KO 評価済 リコンビナント RabMAb

★★★★☆ 6 Abreviews 19 References 画像数 3

製品の概要

製品名	Anti-Glycogen synthase 1/GYS1 antibody [EP817Y]
製品の詳細	Rabbit monoclonal [EP817Y] to Glycogen synthase 1/GYS1
由来種	Rabbit
アプリケーション	適用あり: WB 適用なし: Flow Cyt (Intra) or ICC/IF
種交差性	交差種: Human 交差が予測される動物種: Mouse, Rat 
免疫原	Synthetic peptide within Human Glycogen synthase 1/GYS1 aa 700-800 (C terminal). The exact sequence is proprietary.
ポジティブ・コントロール	WB: HeLa whole cell lysate (ab150035), HEK293 cell lysate.
特記事項	This product is a recombinant monoclonal antibody, which offers several advantages including: <ul style="list-style-type: none"> - High batch-to-batch consistency and reproducibility - Improved sensitivity and specificity - Long-term security of supply - Animal-free production For more information see here . Our RabMAb [®] technology is a patented hybridoma-based technology for making rabbit monoclonal antibodies. For details on our patents, please refer to RabMAb[®] patents .

製品の特性

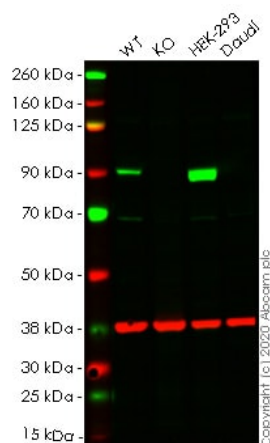
製品の状態	Liquid
保存方法	Shipped at 4°C. Store at +4°C short term (1-2 weeks). Upon delivery aliquot. Store at -20°C. Avoid freeze / thaw cycle.
バッファー	pH: 7.20 Preservative: 0.01% Sodium azide Constituents: 50% Glycerol (glycerin, glycerine), 0.05% BSA, 49% PBS
精製度	Protein A purified
ポリ/モノ	モノクローナル

アプリケーション

アプリケーション	Abreviews	特記事項
WB	★★★★★ (3)	1/10000 - 1/50000. Detects a band of approximately 85 kDa (predicted molecular weight: 81 kDa).

ターゲット情報

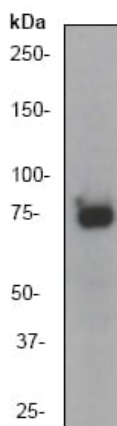
画像



Predicted band size: 81 kDa

Lanes 1-4: Merged signal (red and green). Green - ab40810 observed at 80 kDa. Red - loading control **ab8245** observed at 37 kDa.

ab40810 Recombinant Anti-Glycogen synthase 1/GYS1 antibody [EP817Y] was shown to specifically react with Glycogen synthase 1/GYS1 in wild-type HeLa cells. Loss of signal was observed when knockout cell line **ab265388** (knockout cell lysate **ab257462**) was used. Wild-type and Glycogen synthase 1/GYS1 knockout samples were subjected to SDS-PAGE. ab40810 and Anti-GAPDH antibody [6C5] - Loading Control (**ab8245**) were incubated overnight at 4°C at 1 in 10000 dilution and 1 in 20000 dilution respectively. Blots were developed with Goat anti-Rabbit IgG H&L (IRDye® 800CW) preadsorbed (**ab216773**) and Goat anti-Mouse IgG H&L (IRDye® 680RD) preadsorbed (**ab216776**) secondary antibodies at 1 in 20000 dilution for 1 hour at room temperature before imaging.



Western blot - Anti-Glycogen synthase 1/GYS1 antibody [EP817Y] (ab40810)

Anti-Glycogen synthase 1/GYS1 antibody [EP817Y] (ab40810) at 1/50000 dilution + HeLa cell lysate at 10 µg

Predicted band size: 81 kDa

Observed band size: 85 kDa

Why choose a recombinant antibody?



Research with confidence
Consistent and reproducible results



Long-term and scalable supply
Recombinant technology



Success from the first experiment
Confirmed specificity



Ethical standards compliant
Animal-free production

Anti-Glycogen synthase 1/GYS1 antibody [EP817Y]
(ab40810)

Please note: All products are "FOR RESEARCH USE ONLY. NOT FOR USE IN DIAGNOSTIC PROCEDURES"

Our Abpromise to you: Quality guaranteed and expert technical support

- Replacement or refund for products not performing as stated on the datasheet
- Valid for 12 months from date of delivery
- Response to your inquiry within 24 hours
- We provide support in Chinese, English, French, German, Japanese and Spanish
- Extensive multi-media technical resources to help you
- We investigate all quality concerns to ensure our products perform to the highest standards

If the product does not perform as described on this datasheet, we will offer a refund or replacement. For full details of the Abpromise, please visit <https://www.abcam.co.jp/abpromise> or contact our technical team.

Terms and conditions

- Guarantee only valid for products bought direct from Abcam or one of our authorized distributors