

Anti-Glutathione Synthetase antibody [EPR6562] ab124811

KO 評価済 リコンビナント RabMAb

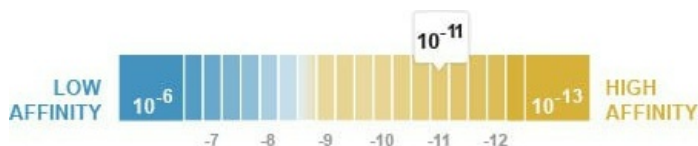
★★★★☆ 6 Abreviews 6 References 画像数 5

製品の概要

製品名	Anti-Glutathione Synthetase antibody [EPR6562]
製品の詳細	Rabbit monoclonal [EPR6562] to Glutathione Synthetase
由来種	Rabbit
アプリケーション	適用あり: WB, IHC-P
種交差性	交差種: Human
免疫原	Synthetic peptide within Human Glutathione Synthetase. The exact sequence is proprietary.
特記事項	<p>This product is a recombinant monoclonal antibody, which offers several advantages including:</p> <ul style="list-style-type: none"> - High batch-to-batch consistency and reproducibility - Improved sensitivity and specificity - Long-term security of supply - Animal-free production <p>For more information see here.</p> <p>Our RabMAb[®] technology is a patented hybridoma-based technology for making rabbit monoclonal antibodies. For details on our patents, please refer to RabMAb[®] patents.</p>

製品の特性

製品の状態	Liquid
保存方法	Shipped at 4°C. Store at -20°C. Stable for 12 months at -20°C.
解離定数 (K _D 値)	K _D = 5.70 x 10 ⁻¹¹ M



[Learn more about K_D](#)

バッファー	<p>pH: 7.20</p> <p>Preservative: 0.05% Sodium azide</p> <p>Constituents: 40% Glycerol (glycerin, glycerine), 9.85% Tris glycine, 50% Tissue culture supernatant</p>
精製度	Protein A purified

特記事項(精製)	ab124811 is not purified, it is provided in storage buffer.
ポリ/モノ	モノクローナル
クローン名	EPR6562
アイソタイプ	IgG

アプリケーション

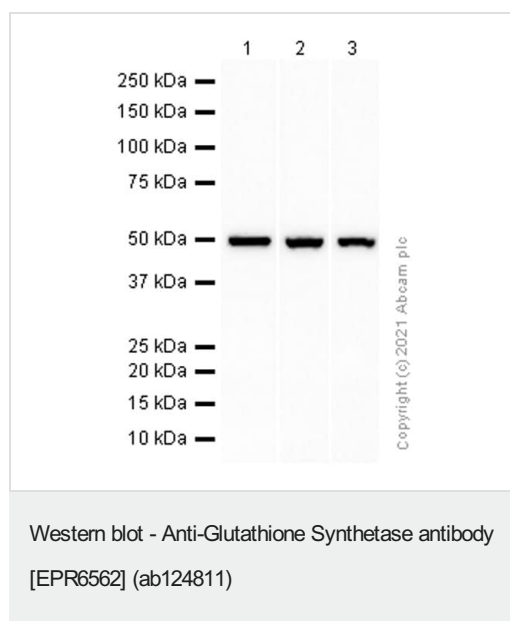
The Abpromise guarantee **Abpromise保証は、次のテスト済みアプリケーションにおけるab124811の使用に適用されます**
 アプリケーションノートには、推奨の開始希釈率がありますが、適切な希釈率につきましてはご検討ください。

アプリケーション	Abreviews	特記事項
WB	★★★★★ (3)	1/10000 - 1/50000. Detects a band of approximately 52 kDa (predicted molecular weight: 52 kDa).
IHC-P	★★★★★ (1)	1/8000. Perform heat mediated antigen retrieval before commencing with IHC staining protocol. (Heat to 98°C, allow to cool for 10-20 minutes) For unpurified use at dilution between 1/50 and 1/100

ターゲット情報

パスウェイ	Sulfur metabolism; glutathione biosynthesis; glutathione from L-cysteine and L-glutamate: step 2/2.
関連疾患	Defects in GSS are the cause of glutathione synthetase deficiency (GSS deficiency) [MIM:266130]; also known as 5-oxoprolinuria or pyroglutamic aciduria. It is a severe form characterized by an increased rate of hemolysis and defective function of the central nervous system. Defects in GSS are the cause of glutathione synthetase deficiency of erythrocytes (GLUSYNDE) [MIM:231900]. Glutathione synthetase deficiency of erythrocytes is a mild form causing hemolytic anemia.
配列類似性	Belongs to the eukaryotic GSH synthase family.

画像



All lanes : Anti-Glutathione Synthetase antibody [EPR6562] (ab124811) at 1/10000 dilution (Purified)

Lane 1 : HeLa (Human cervix adenocarcinoma epithelial cell) whole cell lysate

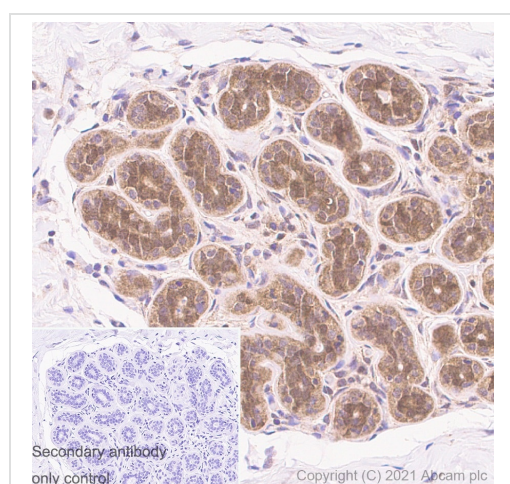
Lane 2 : 293T (Human embryonic kidney epithelial cell) whole cell lysate

Lane 3 : HT-1080 (Human fibrosarcoma epithelial cell) whole cell lysate

Secondary

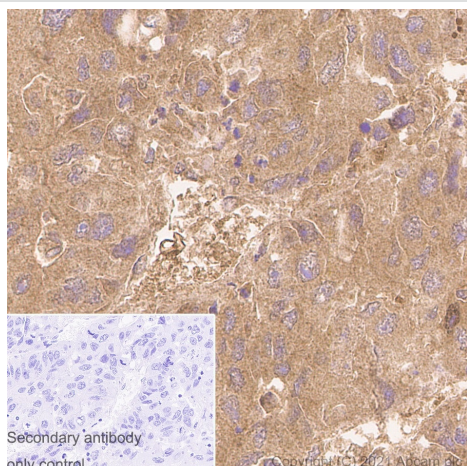
All lanes : Goat Anti-Rabbit IgG H&L (HRP) ([ab97051](#)) at 1/20000 dilution

Predicted band size: 52 kDa



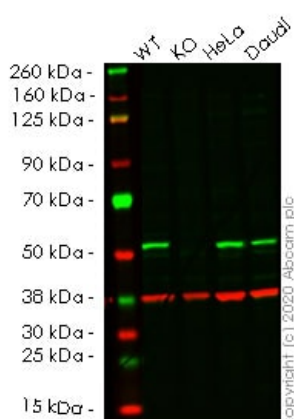
Immunohistochemistry (Formalin/PFA-fixed paraffin-embedded sections) analysis of human breast tissue sections labeling Glutathione Synthetase with Purified ab124811 at 1:8000 (0.11 µg/ml). Heat mediated antigen retrieval was performed using Heat mediated antigen retrieval using Bond™ Epitope Retrieval Solution 2 (pH 9.0) . Tissue was counterstained with Hematoxylin. Rabbit specific IHC polymer detection kit HRP/DAB ([ab209101](#)) secondary antibody was used at 1:0 dilution. PBS instead of the primary antibody was used as the negative control.

Immunohistochemistry (Formalin/PFA-fixed paraffin-embedded sections) - Anti-Glutathione Synthetase antibody [EPR6562] (ab124811)



Immunohistochemistry (Formalin/PFA-fixed paraffin-embedded sections) - Anti-Glutathione Synthetase antibody [EPR6562] (ab124811)

Immunohistochemistry (Formalin/PFA-fixed paraffin-embedded sections) analysis of human hepatocellular carcinoma tissue sections labeling Glutathione Synthetase with Purified ab124811 at 1:8000 (0.11 µg/ml). Heat mediated antigen retrieval was performed using Heat mediated antigen retrieval using Bond™ Epitope Retrieval Solution 2 (pH 9.0) . Tissue was counterstained with Hematoxylin. Rabbit specific IHC polymer detection kit HRP/DAB ([ab209101](#)) secondary antibody was used at 1:0 dilution. PBS instead of the primary antibody was used as the negative control.



Western blot - Anti-Glutathione Synthetase antibody [EPR6562] (ab124811)

All lanes : Anti-Glutathione Synthetase antibody [EPR6562] (ab124811) at 1/10000 dilution

Lane 1 : Wild-type HEK-293T cell lysate

Lane 2 : GSS knockout HEK-293T cell lysate

Lane 3 : HeLa cell lysate

Lane 4 : Daudi cell lysate

Lysates/proteins at 20 µg per lane.

Performed under reducing conditions.

Predicted band size: 52 kDa





Observed band size: 52 kDa

Lanes 1- 4: Merged signal (red and green). Green - ab124811 observed at 52 kDa. Red - Anti-GAPDH antibody [6C5] - Loading Control ([ab8245](#)) observed at 37 kDa.

ab124811 was shown to react with GSS in wild-type HEK-293T cells in western blot. Loss of signal was observed when knockout cell line [ab266342](#) (knockout cell lysate [ab257460](#)) was used. Wild-type HEK-293T and GSS knockout HEK-293T cell lysates were subjected to SDS-PAGE. Membrane was blocked for 1 hour at room temperature in 0.1% TBST with 3% non-fat dried milk.

ab124811 and Anti-GAPDH antibody [6C5] - Loading Control (**ab8245**) overnight at 4°C at a 1 in 10000 dilution and a 1 in 20000 dilution respectively. Blots were developed with Goat anti-Rabbit IgG H&L (IRDye®800CW) preadsorbed (**ab216773**) and Goat anti-Mouse IgG H&L (IRDye®680RD) preadsorbed (**ab216776**) secondary antibodies at 1 in 20000 dilution for 1 hour at room temperature before imaging.

Why choose a recombinant antibody?

 <p>Research with confidence Consistent and reproducible results</p>	 <p>Long-term and scalable supply Recombinant technology</p>
 <p>Success from the first experiment Confirmed specificity</p>	 <p>Ethical standards compliant Animal-free production</p>

Anti-Glutathione Synthetase antibody [EPR6562] (ab124811)

Please note: All products are "FOR RESEARCH USE ONLY. NOT FOR USE IN DIAGNOSTIC PROCEDURES"

Our Abpromise to you: Quality guaranteed and expert technical support

- Replacement or refund for products not performing as stated on the datasheet
- Valid for 12 months from date of delivery
- Response to your inquiry within 24 hours
- We provide support in Chinese, English, French, German, Japanese and Spanish
- Extensive multi-media technical resources to help you
- We investigate all quality concerns to ensure our products perform to the highest standards

If the product does not perform as described on this datasheet, we will offer a refund or replacement. For full details of the Abpromise, please visit <https://www.abcam.co.jp/abpromise> or contact our technical team.

Terms and conditions

- Guarantee only valid for products bought direct from Abcam or one of our authorized distributors