

Anti-Glutathione S Transferase mu antibody ab53942

★★★★★ [2 Abreviews](#) [10 References](#) [画像数 1](#)

製品の概要

製品名	Anti-Glutathione S Transferase mu antibody
製品の詳細	Goat polyclonal to Glutathione S Transferase mu
由来種	Goat
特異性	ab53942 is specific for Glutathione S Transferase (GST) mu. It reacts with subtype 3-3 (M1) and subtype 4-4 (M2).
アプリケーション	適用あり: ICC/IF, IP, WB
種交差性	交差種: Mouse, Rat, Rabbit, Hamster, Human
免疫原	Full length native protein (purified) Rat Glutathione S Transferase mu.
特記事項	<p>The Life Science industry has been in the grips of a reproducibility crisis for a number of years. Abcam is leading the way in addressing this with our range of recombinant monoclonal antibodies and knockout edited cell lines for gold-standard validation. Please check that this product meets your needs before purchasing.</p> <p>If you have any questions, special requirements or concerns, please send us an inquiry and/or contact our Support team ahead of purchase. Recommended alternatives for this product can be found below, along with publications, customer reviews and Q&As</p>

製品の特性

製品の状態	Liquid
保存方法	Shipped at 4°C. Upon delivery aliquot and store at -20°C. Avoid freeze / thaw cycles.
バッファー	Preservative: 0.05% Sodium azide Constituents: PBS, 0.7% BSA
精製度	IgG fraction
特記事項 (精製)	IgG fraction was prepared from the antisera using the caprylic acid precipitation method.
ポリモノ	ポリクローナル
アイソタイプ	IgG

アプリケーション

The Abpromise guarantee

Abpromise保証は、 次のテスト済みアプリケーションにおけるab53942の使用に適用されます

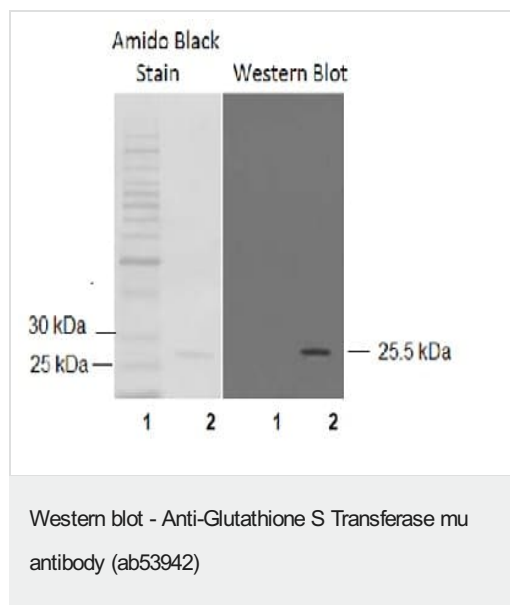
アプリケーションノートには、推奨の開始希釈率がありますが、適切な希釈率につきましてはご確認ください。

アプリケーション	Abreviews	特記事項
ICC/IF		Use at an assay dependent concentration.
IP		Use at an assay dependent concentration. PubMed: 23741294
WB	★★★★★ (2)	1/3000. Detects a band of approximately 33 kDa (predicted molecular weight: 26 kDa).

ターゲット情報

機能	Conjugation of reduced glutathione to a wide number of exogenous and endogenous hydrophobic electrophiles.
組織特異性	Liver (at protein level).
配列類似性	Belongs to the GST superfamily. Mu family. Contains 1 GST C-terminal domain. Contains 1 GST N-terminal domain.
細胞内局在	Cytoplasm.

画像



Lane 1. Molecular weight marker

Lane 2. GST μ standard

A 1:2000 dilution is recommended for ECL method with overnight incubation at room temperature.

Please note: All products are "FOR RESEARCH USE ONLY. NOT FOR USE IN DIAGNOSTIC PROCEDURES"

Our Abpromise to you: Quality guaranteed and expert technical support

- Replacement or refund for products not performing as stated on the datasheet
- Valid for 12 months from date of delivery

- Response to your inquiry within 24 hours
- We provide support in Chinese, English, French, German, Japanese and Spanish
- Extensive multi-media technical resources to help you
- We investigate all quality concerns to ensure our products perform to the highest standards

If the product does not perform as described on this datasheet, we will offer a refund or replacement. For full details of the Abpromise, please visit <https://www.abcam.co.jp/abpromise> or contact our technical team.

Terms and conditions

- Guarantee only valid for products bought direct from Abcam or one of our authorized distributors