

Anti-Glutamate Receptor 1 (AMPA subtype) (phospho S836) antibody ab119397

[1 References](#) [画像数 1](#)

製品の概要

製品名	Anti-Glutamate Receptor 1 (AMPA subtype) (phospho S836) antibody
製品の詳細	Rabbit polyclonal to Glutamate Receptor 1 (AMPA subtype) (phospho S836)
由来種	Rabbit
アプリケーション	適用あり: WB
種交差性	交差種: Mouse
免疫原	Synthetic peptide. This information is proprietary to Abcam and/or its suppliers.
ポジティブ・コントロール	Mouse Brain extracts
特記事項	<p>The Life Science industry has been in the grips of a reproducibility crisis for a number of years. Abcam is leading the way in addressing this with our range of recombinant monoclonal antibodies and knockout edited cell lines for gold-standard validation. Please check that this product meets your needs before purchasing.</p> <p>If you have any questions, special requirements or concerns, please send us an inquiry and/or contact our Support team ahead of purchase. Recommended alternatives for this product can be found below, along with publications, customer reviews and Q&As</p>

製品の特性

製品の状態	Liquid
保存方法	Shipped at 4°C. Store at -20°C. Stable for 12 months at -20°C.
バッファー	<p>pH: 7.40</p> <p>Preservative: 0.02% Sodium azide</p> <p>Constituents: 48% PBS, 50% Glycerol (glycerin, glycerine), 0.88% Sodium chloride</p> <p>(without Mg²⁺ and Ca²⁺)</p>
精製度	Immunogen affinity purified
特記事項 (精製)	ab119397 was affinity-purified by affinity-chromatography using epitope-specific phosphopeptide. The antibody against non-phosphopeptide was removed by chromatography using non-phosphopeptide corresponding to the phosphorylation site.
ポリ/モノ	ポリクローナル

アプリケーション

The Abpromise guarantee

Abpromise保証は、次のテスト済みアプリケーションにおけるab119397の使用に適用されます

アプリケーションノートには、推奨の開始希釈率がありますが、適切な希釈率につきましてはご検討ください。

アプリケーション	Abreviews	特記事項
WB		1/500 - 1/1000. Detects a band of approximately 106 kDa (predicted molecular weight: 102 kDa).

ターゲット情報

機能

Ionotropic glutamate receptor. L-glutamate acts as an excitatory neurotransmitter at many synapses in the central nervous system. Binding of the excitatory neurotransmitter L-glutamate induces a conformation change, leading to the opening of the cation channel, and thereby converts the chemical signal to an electrical impulse. The receptor then desensitizes rapidly and enters a transient inactive state, characterized by the presence of bound agonist.

組織特異性

Widely expressed in brain.

配列類似性

Belongs to the glutamate-gated ion channel (TC 1.A.10.1) family. GRIA1 subfamily.

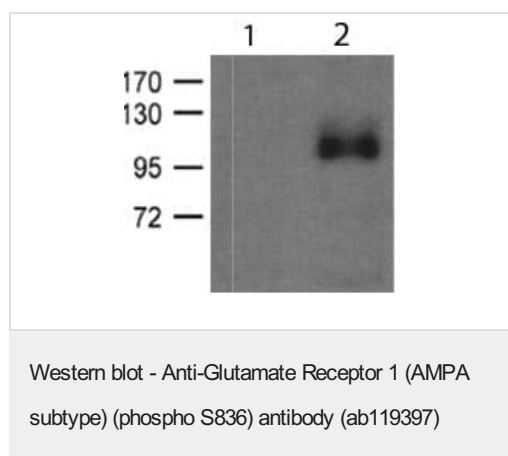
翻訳後修飾

Palmitoylated. Depalmitoylated upon glutamate stimulation. Cys-603 palmitoylation leads to Golgi retention and decreased cell surface expression. In contrast, Cys-829 palmitoylation does not affect cell surface expression but regulates stimulation-dependent endocytosis.

細胞内局在

Cell membrane. Endoplasmic reticulum membrane. Cell junction > synapse > postsynaptic cell membrane. Interaction with CACNG2 promotes cell surface expression.

画像



All lanes : Anti-Glutamate Receptor 1 (AMPA subtype) (phospho S836) antibody (ab119397) at 1/500 dilution

Lane 1 : Control

Lane 2 : Mouse Brain extract

Predicted band size: 102 kDa

Observed band size: 106 kDa

Please note: All products are "FOR RESEARCH USE ONLY. NOT FOR USE IN DIAGNOSTIC PROCEDURES"

Our Abpromise to you: Quality guaranteed and expert technical support

- Replacement or refund for products not performing as stated on the datasheet
- Valid for 12 months from date of delivery
- Response to your inquiry within 24 hours

- We provide support in Chinese, English, French, German, Japanese and Spanish
- Extensive multi-media technical resources to help you
- We investigate all quality concerns to ensure our products perform to the highest standards

If the product does not perform as described on this datasheet, we will offer a refund or replacement. For full details of the Abpromise, please visit <https://www.abcam.co.jp/abpromise> or contact our technical team.

Terms and conditions

- Guarantee only valid for products bought direct from Abcam or one of our authorized distributors