

Anti-GluK5 antibody ab67408

★★★★★ [1 Abreviews](#) [2 References](#) [画像数 3](#)

製品の概要

製品名	Anti-GluK5 antibody
製品の詳細	Rabbit polyclonal to GluK5
由来種	Rabbit
特異性	ab67408 does not cross-react with GRIK4.
アプリケーション	適用あり: ICC/IF, WB, IHC-P
種交差性	交差種: Human
免疫原	Synthetic peptide corresponding to Human GluK5 (C terminal).
ポジティブ・コントロール	Human brain tissue and brain tissue lysate.
特記事項	<p>The Life Science industry has been in the grips of a reproducibility crisis for a number of years. Abcam is leading the way in addressing this with our range of recombinant monoclonal antibodies and knockout edited cell lines for gold-standard validation. Please check that this product meets your needs before purchasing.</p> <p>If you have any questions, special requirements or concerns, please send us an inquiry and/or contact our Support team ahead of purchase. Recommended alternatives for this product can be found below, along with publications, customer reviews and Q&As</p>

製品の特性

製品の状態	Liquid
保存方法	Shipped at 4°C. Store at +4°C.
バッファー	pH: 7.2 Preservative: 0.02% Sodium azide Constituent: PBS
精製度	Immunogen affinity purified
ポリ/モノ	ポリクローナル
アイソタイプ	IgG

アプリケーション

The Abpromise guarantee

Abpromise保証は、 次のテスト済みアプリケーションにおけるab67408の使用に適用されます

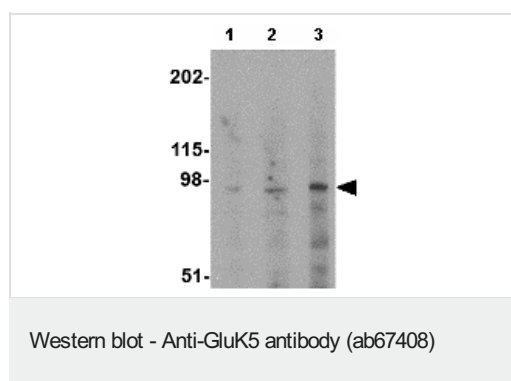
アプリケーションノートには、推奨の開始希釈率がありますが、適切な希釈率につきましてはご確認ください。

アプリケーション	Abreviews	特記事項
ICC/IF		Use a concentration of 20 µg/ml.
WB		Use a concentration of 1 - 2 µg/ml. Detects a band of approximately 95 kDa (predicted molecular weight: 109 kDa).
IHC-P		Use at an assay dependent concentration.

ターゲット情報

機能	Receptor for glutamate. L-glutamate acts as an excitatory neurotransmitter at many synapses in the central nervous system. The postsynaptic actions of Glu are mediated by a variety of receptors that are named according to their selective agonists. This receptor binds kainate > quisqualate > domoate > L-glutamate >> AMPA >> NMDA = 1S,3R-ACPD.
配列類似性	Belongs to the glutamate-gated ion channel (TC 1.A.10.1) family. GRIK5 subfamily.
細胞内局在	Cell membrane. Cell junction > synapse > postsynaptic cell membrane.

画像



Lane 1 : Anti-GluK5 antibody (ab67408) at 0.5 µg/ml

Lane 2 : Anti-GluK5 antibody (ab67408) at 1 µg/ml

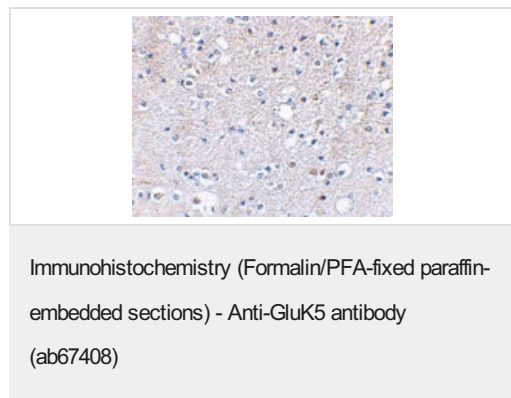
Lane 3 : Anti-GluK5 antibody (ab67408) at 2 µg/ml

All lanes : Human brain tissue lysate

Lysates/proteins at 15 µg per lane.

Predicted band size: 109 kDa

Observed band size: 95 kDa



ab67408 at 2.5µg/ml staining of GluK5 in human brain tissue by IHC-P.

Immunocytochemistry/ Immunofluorescence - Anti-GluK5 antibody (ab67408)

Immunofluorescence of GluK5 in Human Brain cells using ab67408 at 20 ug/ml.

Please note: All products are "FOR RESEARCH USE ONLY. NOT FOR USE IN DIAGNOSTIC PROCEDURES"

Our Abpromise to you: Quality guaranteed and expert technical support

- Replacement or refund for products not performing as stated on the datasheet
- Valid for 12 months from date of delivery
- Response to your inquiry within 24 hours
- We provide support in Chinese, English, French, German, Japanese and Spanish
- Extensive multi-media technical resources to help you
- We investigate all quality concerns to ensure our products perform to the highest standards

If the product does not perform as described on this datasheet, we will offer a refund or replacement. For full details of the Abpromise, please visit <https://www.abcam.co.jp/abpromise> or contact our technical team.

Terms and conditions

- Guarantee only valid for products bought direct from Abcam or one of our authorized distributors