


Anti-Glucose Transporter GLUT4 antibody [mAbcam48547] ab48547

★★★★★ [3 Abreviews](#) [7 References](#) [画像数 1](#)

製品の概要

製品名	Anti-Glucose Transporter GLUT4 antibody [mAbcam48547]
製品の詳細	Mouse monoclonal [mAbcam48547] to Glucose Transporter GLUT4
由来種	Mouse
アプリケーション	適用あり: WB 適用なし: Flow Cyt (Intra)
種交差性	交差種: Mouse, Recombinant fragment 交差が予測される動物種: Rat, Sheep, Rabbit, Goat, Horse, Cow 
免疫原	Synthetic peptide corresponding to Human Glucose Transporter GLUT4 aa 450 to the C-terminus (C terminal) conjugated to keyhole limpet haemocyanin. (Peptide available as ab34088 , ab34089)
ポジティブ・コントロール	WB: ab48547 gave a positive signal against the partial recombinant GLUT4 protein which has an expected molecular weight of 30 kDa.
特記事項	<p>This antibody clone is manufactured by Abcam. If you require a custom buffer formulation or conjugation for your experiments, please contact orders@abcam.com.</p> <p>The Life Science industry has been in the grips of a reproducibility crisis for a number of years. Abcam is leading the way in addressing this with our range of recombinant monoclonal antibodies and knockout edited cell lines for gold-standard validation. Please check that this product meets your needs before purchasing.</p> <p>If you have any questions, special requirements or concerns, please send us an inquiry and/or contact our Support team ahead of purchase. Recommended alternatives for this product can be found below, along with publications, customer reviews and Q&As</p>

製品の特性

製品の状態	Liquid
保存方法	Shipped at 4°C. Store at +4°C short term (1-2 weeks). Upon delivery aliquot. Store at -20°C or -80°C. Avoid freeze / thaw cycle.
バッファー	pH: 7.40 Preservative: 0.02% Sodium azide

精製度	Constituent: PBS
ポリ/モノ	Protein G purified
クローン名	モノクローナル
ミエローマ	mAbcam48547
アイソタイプ	Sp2/0
軽鎖の種類	IgG2b
	kappa

アプリケーション

The Abpromise guarantee Abpromise保証は、次のテスト済みアプリケーションにおけるab48547の使用に適用されます
アプリケーションノートには、推奨の開始希釈率がありますが、適切な希釈率につきましてはご検討ください。

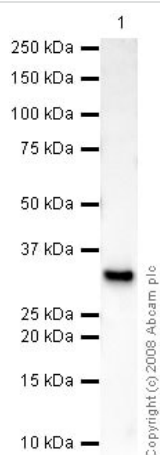
アプリケーション	Abreviews	特記事項
WB		Use a concentration of 1 - 5 µg/ml. Detects a band of approximately 30 kDa (predicted molecular weight: 54 kDa).

追加情報 Is unsuitable for Flow Cyt (Intra).

ターゲット情報

機能	Insulin-regulated facilitative glucose transporter.
組織特異性	Skeletal and cardiac muscles; brown and white fat.
関連疾患	Diabetes mellitus, non-insulin-dependent
配列類似性	Belongs to the major facilitator superfamily. Sugar transporter (TC 2.A.1.1) family. Glucose transporter subfamily.
翻訳後修飾	Sumoylated.
細胞内局在	Cell membrane. Endomembrane system. Cytoplasm, perinuclear region. Localizes primarily to the perinuclear region, undergoing continued recycling to the plasma membrane where it is rapidly reinternalized. The dileucine internalization motif is critical for intracellular sequestration.

画像



Western blot - Anti-Glucose Transporter GLUT4 antibody [mAbcam48547] (ab48547)

Anti-Glucose Transporter GLUT4 antibody [mAbcam48547] (ab48547) at 5 µg/ml + Partial tagged recombinant protein to GLUT4 at 0.1 µg

Secondary

Rabbit polyclonal to Mouse IgG - H&L (HRP) at 1/3000 dilution

Performed under reducing conditions.

Predicted band size: 54 kDa

Observed band size: 30 kDa

ab48547 gave a positive signal against the partial recombinant GLUT4 protein which has an expected molecular weight of 30 kDa.

Please note: All products are "FOR RESEARCH USE ONLY. NOT FOR USE IN DIAGNOSTIC PROCEDURES"

Our Abpromise to you: Quality guaranteed and expert technical support

- Replacement or refund for products not performing as stated on the datasheet
- Valid for 12 months from date of delivery
- Response to your inquiry within 24 hours
- We provide support in Chinese, English, French, German, Japanese and Spanish
- Extensive multi-media technical resources to help you
- We investigate all quality concerns to ensure our products perform to the highest standards

If the product does not perform as described on this datasheet, we will offer a refund or replacement. For full details of the Abpromise, please visit <https://www.abcam.co.jp/abpromise> or contact our technical team.

Terms and conditions

- Guarantee only valid for products bought direct from Abcam or one of our authorized distributors