

Anti-Glucose 6 Phosphate Dehydrogenase antibody ab993

★★★★★ **13 Abreviews** **50 References** 画像数 3

製品の概要

製品名	Anti-Glucose 6 Phosphate Dehydrogenase antibody
製品の詳細	Rabbit polyclonal to Glucose 6 Phosphate Dehydrogenase
由来種	Rabbit
アプリケーション	適用あり: IP, WB, ICC/IF
種交差性	交差種: Mouse, Human 交差が予測される動物種: Chimpanzee, Baboon, Cynomolgus monkey, Rhesus monkey, Gorilla

免疫原	Synthetic peptide within Human Glucose 6 Phosphate Dehydrogenase aa 50-100. The exact sequence is proprietary. Database link: P11413
-----	--

特記事項	<p>The Life Science industry has been in the grips of a reproducibility crisis for a number of years. Abcam is leading the way in addressing this with our range of recombinant monoclonal antibodies and knockout edited cell lines for gold-standard validation. Please check that this product meets your needs before purchasing.</p> <p>If you have any questions, special requirements or concerns, please send us an inquiry and/or contact our Support team ahead of purchase. Recommended alternatives for this product can be found below, along with publications, customer reviews and Q&As</p>
------	---

製品の特性

製品の状態	Liquid
保存方法	Shipped at 4°C. Upon delivery aliquot and store at -20°C. Avoid freeze / thaw cycles.
バッファー	pH: 7 Preservative: 0.1% Sodium azide Constituents: 0.021% PBS, 1.764% Sodium citrate, 1.815% Tris
精製度	Immunogen affinity purified
ポリ/モノ	ポリクローナル
アイソタイプ	IgG

アプリケーション

The Abpromise guarantee

Abpromise保証は、次のテスト済みアプリケーションにおけるab993の使用に適用されます

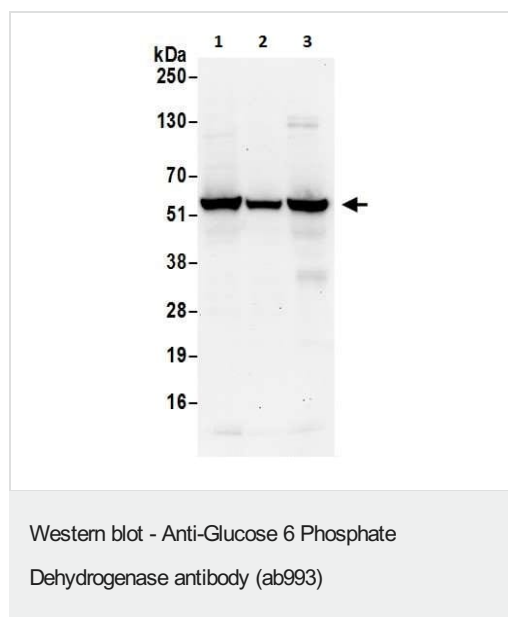
アプリケーションノートには、推奨の開始希釈率がありますが、適切な希釈率につきましてはご検討ください。

アプリケーション	Abreviews	特記事項
IP		Use at 2-10 µg/mg of lysate.
WB	★★★★★ (6)	1/1000 - 1/10000. Predicted molecular weight: 59 kDa.
ICC/IF	★★★★★ (4)	Use a concentration of 5 µg/ml.

ターゲット情報

機能	Catalyzes the rate-limiting step of the oxidative pentose-phosphate pathway, which represents a route for the dissimilation of carbohydrates besides glycolysis. The main function of this enzyme is to provide reducing power (NADPH) and pentose phosphates for fatty acid and nucleic acid synthesis.
組織特異性	Isoform Long is found in lymphoblasts, granulocytes and sperm.
パスウェイ	Carbohydrate degradation; pentose phosphate pathway; D-ribulose 5-phosphate from D-glucose 6-phosphate (oxidative stage): step 1/3.
関連疾患	Anemia, non-spherocytic hemolytic, due to G6PD deficiency
配列類似性	Belongs to the glucose-6-phosphate dehydrogenase family.
翻訳後修飾	Acetylated by ELP3 at Lys-403; acetylation inhibits its homodimerization and enzyme activity. Deacetylated by SIRT2 at Lys-403; deacetylation stimulates its enzyme activity.

画像



All lanes : Anti-Glucose 6 Phosphate Dehydrogenase antibody (ab993) at 1 µg/ml

Lane 1 : HeLa (human epithelial cell line from cervix adenocarcinoma) whole cell lysate

Lane 2 : HEK-293T (human epithelial cell line from embryonic kidney transformed with large T antigen) whole cell lysate

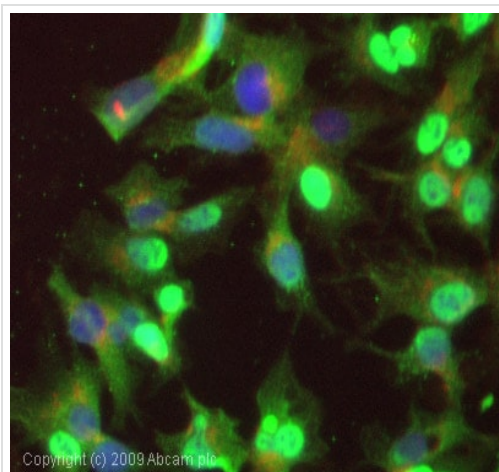
Lane 3 : NIH/3T3 (mouse embryo fibroblast cell line) whole cell lysate

Lysates/proteins at 50 µg per lane.

Developed using the ECL technique.

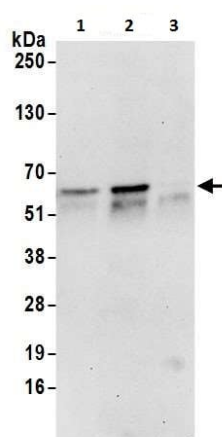
Predicted band size: 59 kDa

Exposure time: 30 seconds



Immunocytochemistry/ Immunofluorescence - Anti-Glucose 6 Phosphate Dehydrogenase antibody (ab993)

ICC/IF image of ab993 stained MCF7 cells. The cells were 100% methanol fixed (5 min) and then incubated in 1%BSA / 10% normal goat serum / 0.3M glycine in 0.1% PBS-Tween for 1h to permeabilise the cells and block non-specific protein-protein interactions. The cells were then incubated with the antibody (ab993 5µg/ml) overnight at +4°C. The secondary antibody (green) was Alexa Fluor® 488 goat anti-rabbit IgG (H+L) used at a 1/1000 dilution for 1h. Alexa Fluor® 594 WGA was used to label plasma membranes (red) at a 1/200 dilution for 1h. DAPI was used to stain the cell nuclei (blue) at a concentration of 1.43µM.



Immunoprecipitation - Anti-Glucose 6 Phosphate Dehydrogenase antibody (ab993)

Glucose 6 Phosphate Dehydrogenase was immunoprecipitated from NIH/3T3 (mouse embryo fibroblast cell line) whole cell lysate (1 mg for IP, 20% of IP loaded) with ab993 at 6 µg/mg lysate. Western blot was performed from the immunoprecipitate using ab993 at 1 µg/ml.

Lane 1: ab993 (batch 3) IP in NIH/3T3 whole cell lysate.

Lane 2: ab993 (batch 4) IP in NIH/3T3 whole cell lysate.

Lane 3: Control IgG IP in NIH/3T3 whole cell lysate.

Detection: Chemiluminescence with exposure time of 30 seconds.

Please note: All products are "FOR RESEARCH USE ONLY. NOT FOR USE IN DIAGNOSTIC PROCEDURES"

Our Abpromise to you: Quality guaranteed and expert technical support

- Replacement or refund for products not performing as stated on the datasheet
- Valid for 12 months from date of delivery
- Response to your inquiry within 24 hours
- We provide support in Chinese, English, French, German, Japanese and Spanish
- Extensive multi-media technical resources to help you
- We investigate all quality concerns to ensure our products perform to the highest standards

If the product does not perform as described on this datasheet, we will offer a refund or replacement. For full details of the Abpromise, please visit <https://www.abcam.co.jp/abpromise> or contact our technical team.

Terms and conditions

- Guarantee only valid for products bought direct from Abcam or one of our authorized distributors