


Anti-Glucose 6 Phosphate Dehydrogenase antibody ab76598

★★★★★ [8 Abreviews](#) [7 References](#) [画像数 3](#)

製品の概要

| | |
|--------------|---|
| 製品名 | Anti-Glucose 6 Phosphate Dehydrogenase antibody |
| 製品の詳細 | Rabbit polyclonal to Glucose 6 Phosphate Dehydrogenase |
| 由来種 | Rabbit |
| アプリケーション | 適用あり: ICC/IF, IHC-P, WB |
| 種交差性 | 交差種: Mouse, Human 交差が予測される動物種: Rat, Sheep, Cow, Chimpanzee, Baboon, Chinese hamster  |
| 免疫原 | Synthetic peptide corresponding to Human Glucose 6 Phosphate Dehydrogenase aa 50-150. (Peptide available as ab87367) |
| ポジティブ・コントロール | Recombinant human Glucose 6 Phosphate Dehydrogenase protein (ab126671) can be used as a positive control in WB. This antibody gave a positive signal in RAW 264.7 and Jurkat whole cell lysates, and in human placenta and lymph node tissue lysates. IHC-P: Hodgkin's lymphoma |
| 特記事項 | <p>The Life Science industry has been in the grips of a reproducibility crisis for a number of years. Abcam is leading the way in addressing this with our range of recombinant monoclonal antibodies and knockout edited cell lines for gold-standard validation. Please check that this product meets your needs before purchasing.</p> <p>If you have any questions, special requirements or concerns, please send us an inquiry and/or contact our Support team ahead of purchase. Recommended alternatives for this product can be found below, along with publications, customer reviews and Q&As</p> |

製品の特性

| | |
|-------|--|
| 製品の状態 | Liquid |
| 保存方法 | Shipped at 4°C. Store at +4°C short term (1-2 weeks). Upon delivery aliquot. Store at -20°C or -80°C. Avoid freeze / thaw cycle. |
| バッファー | pH: 7.40 Preservative: 0.02% Sodium azide Constituent: PBS |
| | Batches of this product that have a concentration < 1mg/ml may have BSA added as a stabilising agent. If you would like information about the formulation of a specific lot, please contact our scientific support team who will be happy to help. |

| | |
|--------|-----------------------------|
| 精製度 | Immunogen affinity purified |
| ポリ/モノ | ポリクローナル |
| アイソタイプ | IgG |

アプリケーション

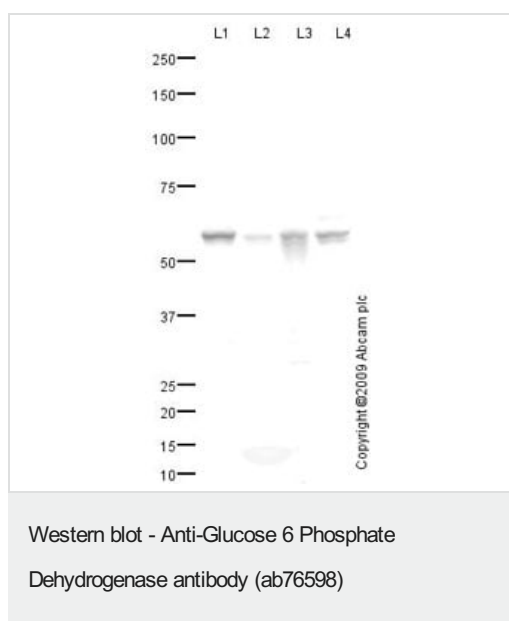
The Abpromise guarantee **Abpromise保証は、次のテスト済みアプリケーションにおけるab76598の使用に適用されます**
 アプリケーションノートには、推奨の開始希釈率がありますが、適切な希釈率につきましてはご検討ください。

| アプリケーション | Abreviews | 特記事項 |
|----------|-----------|---|
| ICC/IF | ★★★★★ (1) | Use a concentration of 1 µg/ml. |
| IHC-P | ★★★★★ (1) | Use a concentration of 0.2 µg/ml. Perform heat mediated antigen retrieval before commencing with IHC staining protocol. |
| WB | ★★★★★ (5) | Use a concentration of 1 µg/ml. Detects a band of approximately 59 kDa (predicted molecular weight: 59 kDa). |

ターゲット情報

| | |
|-------|--|
| 機能 | Catalyzes the rate-limiting step of the oxidative pentose-phosphate pathway, which represents a route for the dissimilation of carbohydrates besides glycolysis. The main function of this enzyme is to provide reducing power (NADPH) and pentose phosphates for fatty acid and nucleic acid synthesis. |
| 組織特異性 | Isoform Long is found in lymphoblasts, granulocytes and sperm. |
| パスウェイ | Carbohydrate degradation; pentose phosphate pathway; D-ribulose 5-phosphate from D-glucose 6-phosphate (oxidative stage): step 1/3. |
| 関連疾患 | Anemia, non-spherocytic hemolytic, due to G6PD deficiency |
| 配列類似性 | Belongs to the glucose-6-phosphate dehydrogenase family. |
| 翻訳後修飾 | Acetylated by ELP3 at Lys-403; acetylation inhibits its homodimerization and enzyme activity. Deacetylated by SIRT2 at Lys-403; deacetylation stimulates its enzyme activity. |

画像



All lanes : Anti-Glucose 6 Phosphate Dehydrogenase antibody (ab76598) at 1 µg/ml

Lane 1 : RAW 264.7 (Mouse leukaemic monocyte macrophage cell line) Whole Cell Lysate

Lane 2 : Human placenta tissue lysate - total protein ([ab29745](#))

Lane 3 : Human lymph node tissue lysate - total protein ([ab29871](#))

Lane 4 : Jurkat (Human T cell lymphoblast-like cell line) Whole Cell Lysate

Lysates/proteins at 10 µg per lane.

Secondary

All lanes : Goat polyclonal to Rabbit IgG - H&L - Pre-Adsorbed (HRP) at 1/3000 dilution

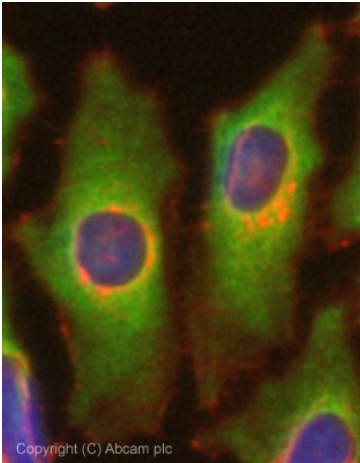
Developed using the ECL technique.

Performed under reducing conditions.

Predicted band size: 59 kDa

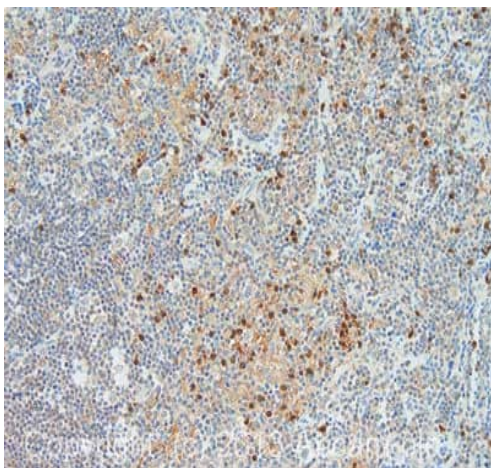
Observed band size: 59 kDa

Exposure time: 30 seconds



Immunocytochemistry/ Immunofluorescence - Anti-Glucose 6 Phosphate Dehydrogenase antibody (ab76598)

ICC/IF image of ab76598 stained HeLa cells. The cells were 100% methanol fixed (5 min) and then incubated in 1%BSA / 10% normal goat serum / 0.3M glycine in 0.1% PBS-Tween for 1h to permeabilise the cells and block non-specific protein-protein interactions. The cells were then incubated with the antibody (ab76598, 1µg/ml) overnight at +4°C. The secondary antibody (green) was Alexa Fluor® 488 goat anti-rabbit IgG (H+L) used at a 1/1000 dilution for 1h. Alexa Fluor® 594 WGA was used to label plasma membranes (red) at a 1/200 dilution for 1h. DAPI was used to stain the cell nuclei (blue) at a concentration of 1.43µM. This antibody also gave a positive result in 100% methanol fixed (5 min) Hek293, HepG2 and MCF7 cells at 1µg/ml.



Immunohistochemistry (Formalin/PFA-fixed paraffin-embedded sections) - Anti-Glucose 6 Phosphate Dehydrogenase antibody (ab76598)

IHC image of Glucose 6 Phosphate staining in human Hodgkin's Lymphoma formalin fixed paraffin embedded tissue section, performed on a Leica Bond™ system using the standard protocol F. The section was pre-treated using heat mediated antigen retrieval with sodium citrate buffer (pH6, epitope retrieval solution 1) for 20 mins. The section was then incubated with ab76598, 0.2µg/ml, for 15 mins at room temperature and detected using an HRP conjugated compact polymer system. DAB was used as the chromogen. The section was then counterstained with haematoxylin and mounted with DPX.

Please note: All products are "FOR RESEARCH USE ONLY. NOT FOR USE IN DIAGNOSTIC PROCEDURES"

Our Abpromise to you: Quality guaranteed and expert technical support

- Replacement or refund for products not performing as stated on the datasheet
- Valid for 12 months from date of delivery
- Response to your inquiry within 24 hours

- We provide support in Chinese, English, French, German, Japanese and Spanish
- Extensive multi-media technical resources to help you
- We investigate all quality concerns to ensure our products perform to the highest standards

If the product does not perform as described on this datasheet, we will offer a refund or replacement. For full details of the Abpromise, please visit <https://www.abcam.co.jp/abpromise> or contact our technical team.

Terms and conditions

- Guarantee only valid for products bought direct from Abcam or one of our authorized distributors