


# Anti-Glucokinase antibody ab88056

★★★★★ [1 Abreviews](#) [6 References](#) [画像数 3](#)

### 製品の概要

製品名	Anti-Glucokinase antibody
製品の詳細	Rabbit polyclonal to Glucokinase
由来種	Rabbit
特異性	Replenishment batches of our polyclonal antibody, ab88056 are tested in WB. Previous batches were additionally validated in ICC/IF. This application is still expected to work and is covered by our Abpromise guarantee. You may also be interested in our alternative recombinant antibody, <a href="#">ab155962</a> .
アプリケーション	<b>適用あり:</b> ICC/IF, WB
種交差性	<b>交差種:</b> Mouse, Human <b>交差が予測される動物種:</b> Rat, Rabbit, Horse, Chicken, Cow, Non human primates 
免疫原	Synthetic peptide corresponding to Human Glucokinase aa 1-100 conjugated to keyhole limpet haemocyanin. Database link: <a href="#">P35557</a> (Peptide available as <a href="#">ab101298</a> )
ポジティブ・コントロール	Recombinant Human Glucokinase protein ( <a href="#">ab73514</a> ) can be used as a positive control in WB. This antibody gave a positive signal in human and mouse liver tissue lysates. ICC/IF: MCF7 cells
特記事項	<p>The Life Science industry has been in the grips of a reproducibility crisis for a number of years. Abcam is leading the way in addressing this with our range of recombinant monoclonal antibodies and knockout edited cell lines for gold-standard validation. Please check that this product meets your needs before purchasing.</p> <p>If you have any questions, special requirements or concerns, please send us an inquiry and/or contact our Support team ahead of purchase. Recommended alternatives for this product can be found below, along with publications, customer reviews and Q&amp;As</p>

### 製品の特性

製品の状態	Liquid
保存方法	Shipped at 4°C. Store at +4°C short term (1-2 weeks). Upon delivery aliquot. Store at -20°C or -80°C. Avoid freeze / thaw cycle.
バッファー	pH: 7.40 Preservative: 0.02% Sodium azide

Constituent: PBS

Batches of this product that have a concentration < 1mg/ml may have BSA added as a stabilising agent. If you would like information about the formulation of a specific lot, please contact our scientific support team who will be happy to help.

**精製度** Immunogen affinity purified  
**ポリ/モノ** ポリクローナル  
**アイソタイプ** IgG

## アプリケーション

**The Abpromise guarantee** Abpromise保証は、次のテスト済みアプリケーションにおけるab88056の使用に適用されます  
アプリケーションノートには、推奨の開始希釈率がありますが、適切な希釈率につきましてはご検討ください。

アプリケーション	Abreviews	特記事項
ICC/IF		Use a concentration of 5 µg/ml.
WB	★★★★★ (1)	Use a concentration of 1 µg/ml. Detects a band of approximately 52 kDa (predicted molecular weight: 52 kDa).

## ターゲット情報

**機能** Catalyzes the initial step in utilization of glucose by the beta-cell and liver at physiological glucose concentration. Glucokinase has a high Km for glucose, and so it is effective only when glucose is abundant. The role of GCK is to provide G6P for the synthesis of glycogen. Pancreatic glucokinase plays an important role in modulating insulin secretion. Hepatic glucokinase helps to facilitate the uptake and conversion of glucose by acting as an insulin-sensitive determinant of hepatic glucose usage.

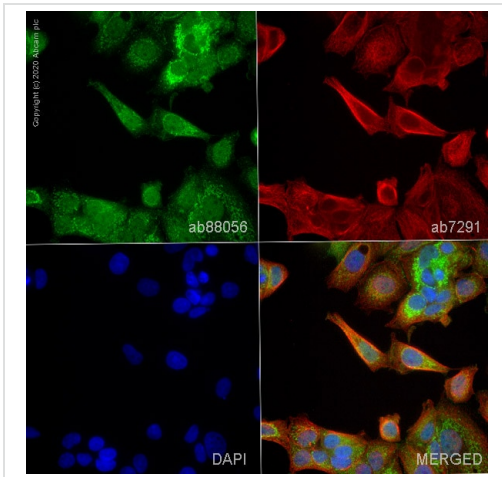
**組織特異性** Isoform 1 is expressed in pancreas. Isoform 2 and isoform 3 is expressed in liver.

**関連疾患** Defects in GCK are the cause of maturity-onset diabetes of the young type 2 (MODY2) [MIM:125851]; also shortened MODY-2. MODY is a form of diabetes that is characterized by an autosomal dominant mode of inheritance, onset in childhood or early adulthood (usually before 25 years of age), a primary defect in insulin secretion and frequent insulin-independence at the beginning of the disease.

Defects in GCK are the cause of familial hyperinsulinemic hypoglycemia type 3 (HHF3) [MIM:602485]; also known as persistent hyperinsulinemic hypoglycemia of infancy (PHHI) or congenital hyperinsulinism. HHF is the most common cause of persistent hypoglycemia in infancy. Unless early and aggressive intervention is undertaken, brain damage from recurrent episodes of hypoglycemia may occur.

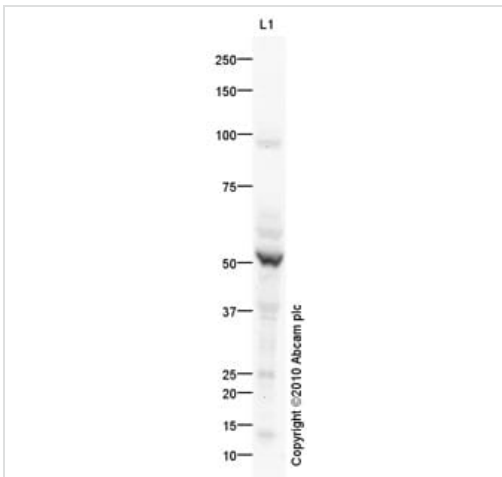
**配列類似性** Belongs to the hexokinase family.

## 画像



Immunocytochemistry/ Immunofluorescence - Anti-Glucokinase antibody (ab88056)

ab88056 staining Glucokinase in MCF7 cells. The cells were fixed with 4% paraformaldehyde (10 min), permeabilized with 0.1% PBS-Triton X-100 for 5 minutes and then blocked with 1% BSA/10% normal goat serum/0.3M glycine in 0.1%PBS-Tween for 1h. The cells were then incubated overnight at 4°C with ab88056 at 5µg/ml and **ab7291**, Mouse monoclonal [DM1A] to alpha Tubulin - Loading Control. Cells were then incubated with **ab150081**, Goat polyclonal Secondary Antibody to Rabbit IgG - H&L (Alexa Fluor® 488), pre-adsorbed at 1/1000 dilution (shown in green) and **ab150120**, Goat polyclonal Secondary Antibody to Mouse IgG - H&L (Alexa Fluor® 594), pre-adsorbed at 1/1000 dilution (shown in pseudocolour red). Nuclear DNA was labelled with DAPI (shown in blue).



Western blot - Anti-Glucokinase antibody (ab88056)

Anti-Glucokinase antibody (ab88056) at 1 µg/ml + Human liver tissue lysate - total protein (**ab29889**) at 10 µg/ml

### Secondary

Goat Anti-Rabbit IgG H&L (HRP) preadsorbed (**ab97080**) at 1/5000 dilution

Developed using the ECL technique.

Performed under reducing conditions.

**Predicted band size:** 52 kDa

**Observed band size:** 52 kDa

**Exposure time:** 2 minutes



Western blot - Anti-Glucokinase antibody (ab88056)

Anti-Glucokinase antibody (ab88056) at 1 µg/ml + Liver (Mouse)  
Tissue Lysate at 10 µg

**Secondary**

Goat Anti-Rabbit IgG H&L (HRP) preadsorbed (**ab97080**) at  
1/5000 dilution

Developed using the ECL technique.

Performed under reducing conditions.

**Predicted band size:** 52 kDa

**Observed band size:** 52 kDa

**Exposure time:** 8 minutes

**Please note:** All products are "FOR RESEARCH USE ONLY. NOT FOR USE IN DIAGNOSTIC PROCEDURES"

**Our Abpromise to you: Quality guaranteed and expert technical support**

---

- Replacement or refund for products not performing as stated on the datasheet
- Valid for 12 months from date of delivery
- Response to your inquiry within 24 hours
  
- We provide support in Chinese, English, French, German, Japanese and Spanish
- Extensive multi-media technical resources to help you
- We investigate all quality concerns to ensure our products perform to the highest standards

If the product does not perform as described on this datasheet, we will offer a refund or replacement. For full details of the Abpromise, please visit <https://www.abcam.co.jp/abpromise> or contact our technical team.

**Terms and conditions**

---

- Guarantee only valid for products bought direct from Abcam or one of our authorized distributors