

Anti-Glucagon antibody [EPR3070-45] ab108426

リコンビナント **RabMAb**

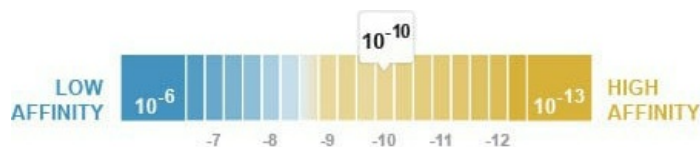
画像数 9

製品の概要

製品名	Anti-Glucagon antibody [EPR3070-45]
製品の詳細	Rabbit monoclonal [EPR3070-45] to Glucagon
由来種	Rabbit
アプリケーション	適用あり: WB, IHC-P 適用なし: Flow Cyt or ICC/IF
種交差性	交差種: Human
免疫原	Synthetic peptide. This information is proprietary to Abcam and/or its suppliers.
ポジティブ・コントロール	Glucagon recombinant protein; Human pancreas tissue.
特記事項	<p>This product is a recombinant monoclonal antibody, which offers several advantages including:</p> <ul style="list-style-type: none"> - High batch-to-batch consistency and reproducibility - Improved sensitivity and specificity - Long-term security of supply - Animal-free production <p>For more information see here.</p> <p>Our RabMAb[®] technology is a patented hybridoma-based technology for making rabbit monoclonal antibodies. For details on our patents, please refer to RabMAb[®] patents.</p> <p>Mouse, Rat: We have preliminary internal testing data to indicate this antibody may not react with these species. Please contact us for more information.</p>

製品の特性

製品の状態	Liquid
保存方法	Shipped at 4°C. Store at +4°C short term (1-2 weeks). Upon delivery aliquot. Store at -20°C. Stable for 12 months at -20°C.
解離定数 (K _D 値)	K _D = 3.31 x 10 ⁻¹⁰ M



[Learn more about K_D](#)

バッファー	pH: 7.20 Preservative: 0.01% Sodium azide Constituents: 40% Glycerol, 59% PBS, 0.05% BSA
精製度	Protein A purified
ポリ/モノ	モノクローナル
クローン名	EPR3070-45
アイソタイプ	IgG

アプリケーション

The Abpromise guarantee **Abpromise保証は、** 次のテスト済みアプリケーションにおけるab108426の使用に適用されます
アプリケーションノートには、推奨の開始希釈率がありますが、適切な希釈率につきましてはご検討ください。

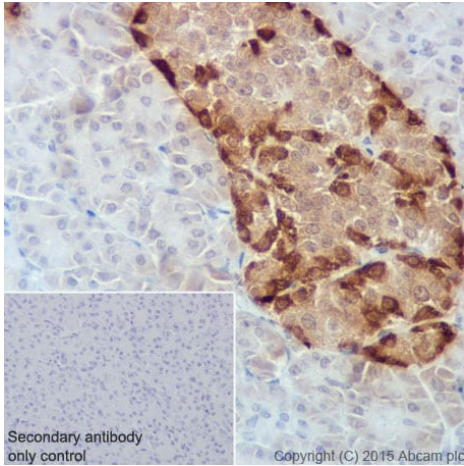
アプリケーション	Abreviews	特記事項
WB		1/5000. Predicted molecular weight: 21 kDa. For unpurified, use 1/2000.
IHC-P		1/100 - 1/250. Perform heat mediated antigen retrieval with Tris/EDTA buffer pH 9.0 before commencing with IHC staining protocol. Antigen retrieval is recommended.

追加情報 Is unsuitable for Flow Cyt or ICC/IF.

ターゲット情報

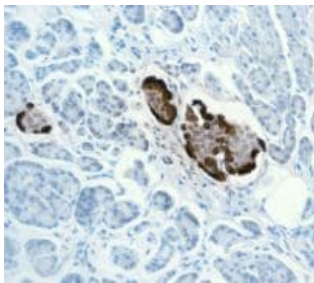
関連性	Glucagon is a hormone that is secreted by alpha cells in the pancreas. Glucagon antagonizes insulin by converting glycogen to glucose in the liver and increasing blood sugar levels. Glucagon-like peptide 1 (GLP1), Glucagon-like peptide 2 (GLP2), VIP (vasoactive intestinal peptide) and PACAP (pituitary adenylate cyclase activating polypeptide) are in the glucagons hormone family. GLP1 is a transmitter in the central nervous system that regulates feeding and drinking behavior. GLP2 stimulates intestinal epithelial growth.
細胞内局在	Secreted

画像



Immunohistochemistry (Formalin/PFA-fixed paraffin-embedded sections) - Anti-Glucagon antibody [EPR3070-45] (ab108426)

Immunohistochemical staining of paraffin embedded human pancreas with purified ab108426 at a working dilution of 1/250. The secondary antibody used is HRP goat anti-rabbit IgG H&L (**ab97051**) at 1/500. The sample is counter-stained with hematoxylin. Antigen retrieval was performed using Tris-EDTA buffer, pH 9.0. PBS was used instead of the primary antibody as the negative control, and is shown in the inset.



Immunohistochemistry (Formalin/PFA-fixed paraffin-embedded sections) - Anti-Glucagon antibody [EPR3070-45] (ab108426)

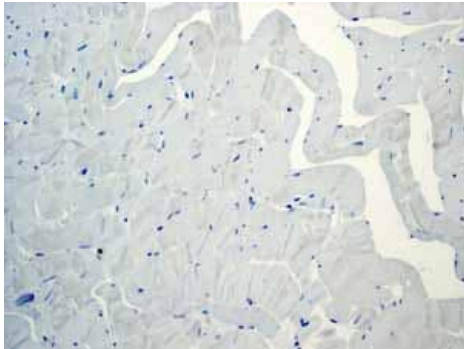
Unpurified ab108426, at 1/100 dilution, staining Glucagon in paraffin-embedded Human pancreas tissue by Immunohistochemistry.



Western blot - Anti-Glucagon antibody [EPR3070-45] (ab108426)

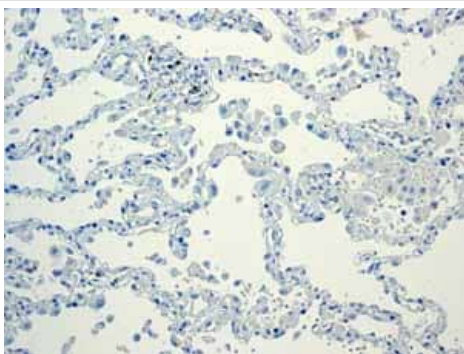
Anti-Glucagon antibody [EPR3070-45] (ab108426) at 1/2000 dilution (unpurified) + Glucagon recombinant protein at 10 μ g

Predicted band size: 21 kDa



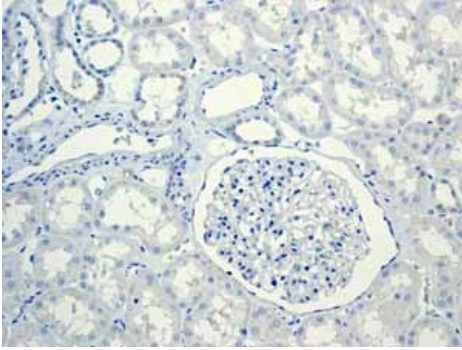
Immunohistochemistry (Formalin/PFA-fixed paraffin-embedded sections) - Anti-Glucagon antibody [EPR3070-45] (ab108426)

Unpurified ab108426 showing negative staining in Skeletal muscle tissue.



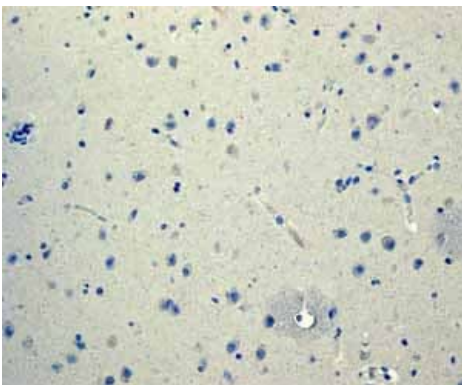
Immunohistochemistry (Formalin/PFA-fixed paraffin-embedded sections) - Anti-Glucagon antibody [EPR3070-45] (ab108426)

Unpurified ab108426 showing negative staining in Normal lung tissue.



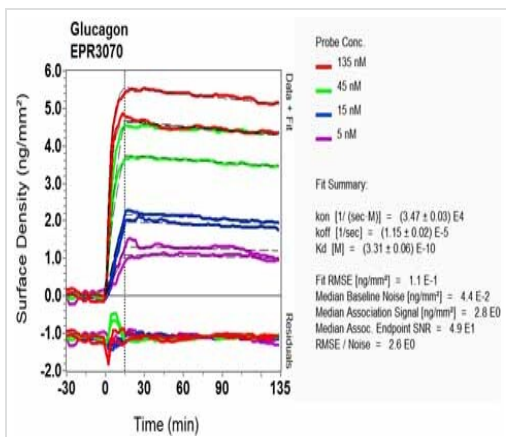
Unpurified ab108426 showing negative staining in Normal kidney tissue.

Immunohistochemistry (Formalin/PFA-fixed paraffin-embedded sections) - Anti-Glucagon antibody
[EPR3070-45] (ab108426)



Unpurified ab108426 showing negative staining in Normal brain tissue.

Immunohistochemistry (Formalin/PFA-fixed paraffin-embedded sections) - Anti-Glucagon antibody
[EPR3070-45] (ab108426)



OI-RD Scanning - Anti-Glucagon antibody
[EPR3070-45] (ab108426)

Equilibrium disassociation constant (K_D)

Learn more about K_D

[Click here to learn more about \$K_D\$](#)

Why choose a
recombinant antibody?



Research with confidence
Consistent and reproducible results



Long-term and scalable supply
Recombinant technology



Success from the first experiment
Confirmed specificity



Ethical standards compliant
Animal-free production

Anti-Glucagon antibody [EPR3070-45] (ab108426)

Please note: All products are "FOR RESEARCH USE ONLY. NOT FOR USE IN DIAGNOSTIC PROCEDURES"

Our Abpromise to you: Quality guaranteed and expert technical support

- Replacement or refund for products not performing as stated on the datasheet
- Valid for 12 months from date of delivery
- Response to your inquiry within 24 hours
- We provide support in Chinese, English, French, German, Japanese and Spanish
- Extensive multi-media technical resources to help you
- We investigate all quality concerns to ensure our products perform to the highest standards

If the product does not perform as described on this datasheet, we will offer a refund or replacement. For full details of the Abpromise, please visit <https://www.abcam.co.jp/abpromise> or contact our technical team.

Terms and conditions

- Guarantee only valid for products bought direct from Abcam or one of our authorized distributors