

Anti-Glucagon antibody [EP3070] ab92517

リコンビナント **RabMAb**

★★★★★ **8 Abreviews** **63 References** 画像数 10

製品の概要

製品名	Anti-Glucagon antibody [EP3070]
製品の詳細	Rabbit monoclonal [EP3070] to Glucagon
由来種	Rabbit
アプリケーション	適用あり: WB, IHC-P
種交差性	交差種: Mouse, Rat, Human
免疫原	Synthetic peptide within Human Glucagon aa 50-150 (N terminal). The exact sequence is proprietary.
ポジティブ・コントロール	IHC-P: Murine, human, and rat pancreatic tissue. WB: Capan-1 cell lysate, Mouse and rat pancreas tissue lysate
特記事項	<p>This product is a recombinant monoclonal antibody, which offers several advantages including:</p> <ul style="list-style-type: none"> - High batch-to-batch consistency and reproducibility - Improved sensitivity and specificity - Long-term security of supply - Animal-free production <p>For more information see here.</p> <p>Our RabMAb[®] technology is a patented hybridoma-based technology for making rabbit monoclonal antibodies. For details on our patents, please refer to RabMAb[®] patents.</p>

製品の特性

製品の状態	Liquid
保存方法	Shipped at 4°C. Store at +4°C short term (1-2 weeks). Upon delivery aliquot. Store at -20°C long term. Avoid freeze / thaw cycle.
バッファー	<p>pH: 7.20</p> <p>Preservative: 0.01% Sodium azide</p> <p>Constituents: 59% PBS, 40% Glycerol (glycerin, glycerine), 0.5% BSA</p>
精製度	Protein A purified
ポリ/モノ	モノクローナル
クローン名	EP3070

アプリケーション

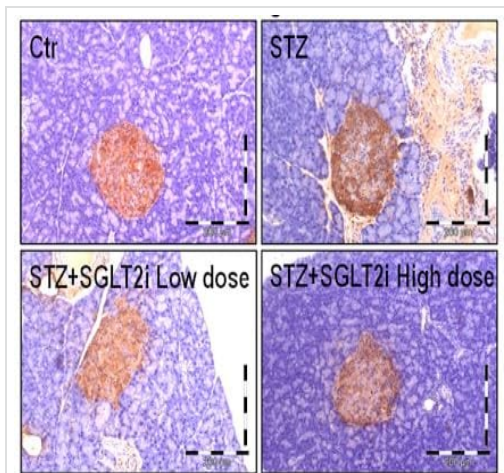
The Abpromise guarantee **Abpromise保証は、** 次のテスト済みアプリケーションにおけるab92517の使用に適用されます
アプリケーションノートには、推奨の開始希釈率がありますが、適切な希釈率につきましてはご確認ください。

アプリケーション	Abreviews	特記事項
WB	★★★★★ (1)	Use a concentration of 0.3 µg/ml. Predicted molecular weight: 21 kDa.
IHC-P	★★★★★ (4)	1/8000. Perform heat mediated antigen retrieval before commencing with IHC staining protocol. See <u>IHC antigen retrieval protocols</u> . For unpurified use at 1/1000 - 1/5000.

ターゲット情報

関連性	Glucagon is a hormone that is secreted by alpha cells in the pancreas. Glucagon antagonizes insulin by converting glycogen to glucose in the liver and increasing blood sugar levels. Glucagon-like peptide 1 (GLP1), Glucagon-like peptide 2 (GLP2), VIP (vasoactive intestinal peptide) and PACAP (pituitary adenylyl cyclase activating polypeptide) are in the glucagons hormone family. GLP1 is a transmitter in the central nervous system that regulates feeding and drinking behavior. GLP2 stimulates intestinal epithelial growth.
細胞内局在	Secreted

画像

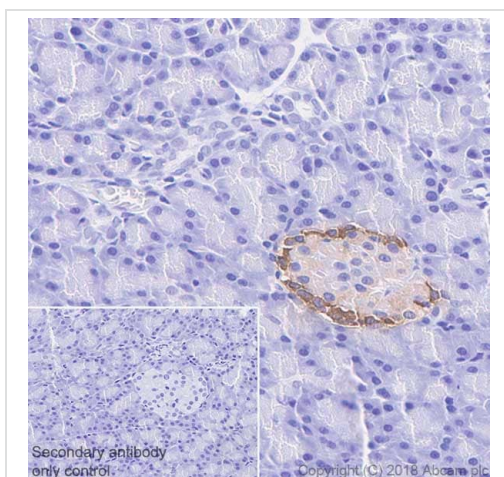


Immunohistochemistry (Formalin/PFA-fixed paraffin-embedded sections) - Anti-Glucagon antibody

[EP3070] (ab92517)

Image from Oelze Met al., PLoS One. 2014;9(11):e112394. Fig 1.; doi: 10.1371/journal.pone.0112394. Reproduced under the Creative Commons license <http://creativecommons.org/licenses/by/4.0/>

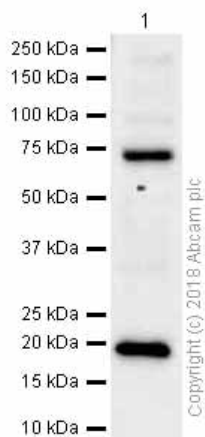
Glucagon measurements in controls and diabetic rats 8 weeks after STZ injection and 7 weeks of SGLT2i (low and high dose) treatment. Representative immunohistochemical stainings of pancreatic tissue.



Immunohistochemistry (Formalin/PFA-fixed paraffin-embedded sections) - Anti-Glucagon antibody

[EP3070] (ab92517)

Immunohistochemistry (Formalin/PFA-fixed paraffin-embedded sections) analysis of Rat pancreas tissue sections labeling Glucagon with Purified ab92517 at 1:8000 dilution (0.038 µg/ml). Heat mediated antigen retrieval was performed using using citrate (pH 6.0)Goat Anti-Rabbit IgG H&L (HRP) **ab97051**was used as the secondary antibody.Negative control:PBS instead of the primary antibody.Hematoxylinwas used as a counterstain



Western blot - Anti-Glucagon antibody [EP3070]
(ab92517)

Anti-Glucagon antibody [EP3070] (ab92517) at 0.3 µg/ml (purified)
+ Capan-1 (Human pancreas adenocarcinoma epithelial cell) whole
cell lysates at 15 µg

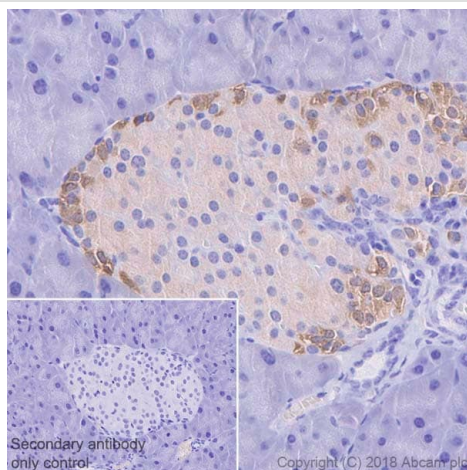
Secondary

Goat Anti-Rabbit IgG H&L (HRP) ([ab97051](#)) at 1/20000 dilution

Predicted band size: 21 kDa

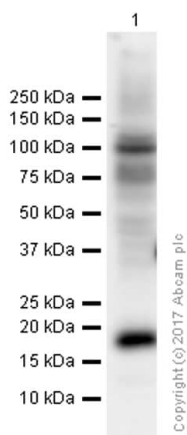
Blocking and diluting buffer: 5% NFDM/TBST.

The bands around 75 kDa are non-specific signals.



Immunohistochemistry (Formalin/PFA-fixed paraffin-
embedded sections) - Anti-Glucagon antibody
[EP3070] (ab92517)

Immunohistochemistry (Formalin/PFA-fixed paraffin-embedded
sections) analysis of Mouse pancreas tissue sections labeling
Glucagon with Purified ab92517 at 1:8000 dilution (0.038 µg/ml).
Heat mediated antigen retrieval was performed using using citrate
(pH 6.0) Goat Anti-Rabbit IgG H&L (HRP) [ab97051](#) was used as the
secondary antibody. Negative control: PBS instead of the primary
antibody. Hematoxylin was used as a counterstain



Western blot - Anti-Glucagon antibody [EP3070]
(ab92517)

Anti-Glucagon antibody [EP3070] (ab92517) at 0.3 µg/ml (purified)
+ Mouse pancreas lysates at 20 µg

Secondary

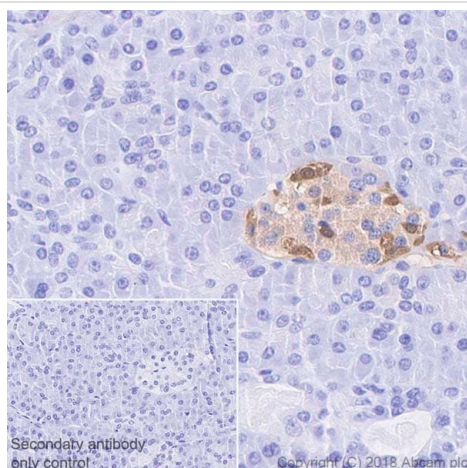
Goat Anti-Rabbit IgG (HRP) with minimal cross-reactivity with
human IgG at 1/2000 dilution

Predicted band size: 21 kDa

Observed band size: 21 kDa

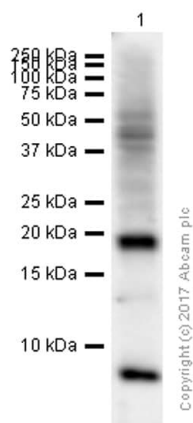
Blocking and diluting buffer: 5% NFDM/TBST.

The bands around 75 kDa are non-specific signals.



Immunohistochemistry (Formalin/PFA-fixed paraffin-
embedded sections) - Anti-Glucagon antibody
[EP3070] (ab92517)

Immunohistochemistry (Formalin/PFA-fixed paraffin-embedded
sections) analysis of Human pancreas tissue sections labeling
Glucagon with Purified ab92517 at 1:8000 dilution (0.038 µg/ml).
Heat mediated antigen retrieval was performed using using citrate
(pH 6.0)Goat Anti-Rabbit IgG H&L (HRP) **ab97051**was used as the
secondary antibody.Negative control:PBS instead of the primary
antibody.Hematoxylinwas used as a counterstain



Western blot - Anti-Glucagon antibody [EP3070]
(ab92517)

Anti-Glucagon antibody [EP3070] (ab92517) at 0.3 µg/ml (purified)
+ Rat pancreas lysates at 15 µg

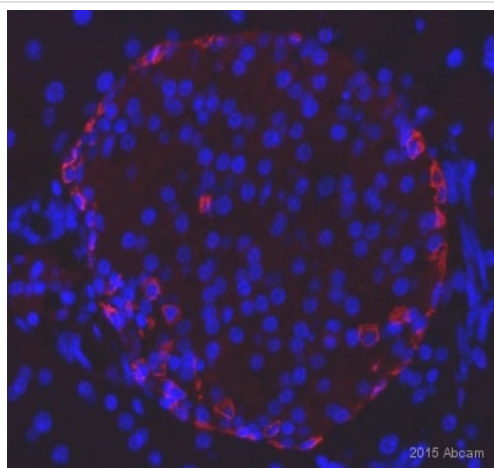
Secondary

Goat Anti-Rabbit IgG H&L (HRP) ([ab97051](#)) at 1/20000 dilution

Predicted band size: 21 kDa

Blocking and diluting buffer: 5% NFDM/TBST.

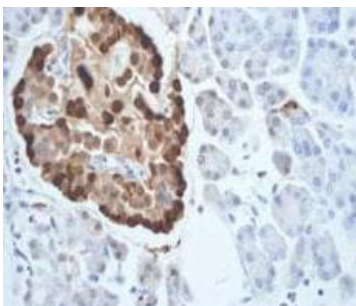
The bands around 75 kDa are non-specific signals.



Immunohistochemistry (Formalin/PFA-fixed paraffin-
embedded sections) - Anti-Glucagon antibody
[EP3070] (ab92517)

Image is courtesy of an anonymous AbReview.

Immunohistochemical analysis of PFA-fixed paraffin-embedded murine pancreatic tissue sections, labelling glucagon with unpurified ab92517 at a dilution of 1/2500 incubated for 18 hours at 4°C. Antigen retrieval was performed through heat-mediated 10mM sodium citrate pH 6.0 incubation. Blocking was done with 5% serum for 1 hour at 25°C. The secondary was a donkey anti-rabbit polyclonal Alexa Fluor® 488 conjugate at 1/400. Counterstaining is with DAPI (blue) against nuclear DNA.



Unpurified ab92517, at 1/1000 dilution, staining Glucagon in paraffin embedded Human pancreas tissue by Immunohistochemistry.

Perform heat mediated antigen retrieval before commencing with IHC staining protocol.

Immunohistochemistry (Formalin/PFA-fixed paraffin-embedded sections) - Anti-Glucagon antibody [EP3070] (ab92517)

Why choose a recombinant antibody?



Research with confidence
Consistent and reproducible results



Long-term and scalable supply
Recombinant technology



Success from the first experiment
Confirmed specificity



Ethical standards compliant
Animal-free production

Anti-Glucagon antibody [EP3070] (ab92517)

Please note: All products are "FOR RESEARCH USE ONLY. NOT FOR USE IN DIAGNOSTIC PROCEDURES"

Our Abpromise to you: Quality guaranteed and expert technical support

- Replacement or refund for products not performing as stated on the datasheet
- Valid for 12 months from date of delivery
- Response to your inquiry within 24 hours
- We provide support in Chinese, English, French, German, Japanese and Spanish
- Extensive multi-media technical resources to help you
- We investigate all quality concerns to ensure our products perform to the highest standards

If the product does not perform as described on this datasheet, we will offer a refund or replacement. For full details of the Abpromise, please visit <https://www.abcam.co.jp/abpromise> or contact our technical team.

Terms and conditions

- Guarantee only valid for products bought direct from Abcam or one of our authorized distributors