




Anti-GLP-1 antibody [8G9] ab26278

20 References **画像数 3**

製品の概要

製品名	Anti-GLP-1 antibody [8G9]
製品の詳細	Mouse monoclonal [8G9] to GLP-1
由来種	Mouse
アプリケーション	適用あり: IHC-P, Sandwich ELISA
種交差性	交差種: Mouse, Human 交差が予測される動物種: a wide range of other species 
免疫原	Synthetic peptide corresponding to Human GLP-1 aa 50-150. ab26278 reacts with the amidated C-Terminus of GLP-1(7-36) coupled to a carrier. Database link: <u>P01275</u> <div>  <u>Run BLAST with</u>  <u>Run BLAST with</u> </div>
エピトープ	C-terminal epitope of GLP-1(7-36)amide
ポジティブ・コントロール	IHC-P/IHC-Fr: rat colon, rat and mouse pancreas tissue.
特記事項	ab26278 should be used as capture with biotinylated version <u>ab121057</u> as detection. The Life Science industry has been in the grips of a reproducibility crisis for a number of years. Abcam is leading the way in addressing this with our range of recombinant monoclonal antibodies and knockout edited cell lines for gold-standard validation. Please check that this product meets your needs before purchasing. If you have any questions, special requirements or concerns, please send us an inquiry and/or contact our Support team ahead of purchase. Recommended alternatives for this product can be found below, along with publications, customer reviews and Q&As

製品の特性

製品の状態	Liquid
保存方法	Shipped at 4°C. Store at +4°C short term (1-2 weeks). Store at -20°C or -80°C. Avoid freeze / thaw cycle.
バッファー	pH: 7.40 Preservative: 0.097% Sodium azide Constituents: 0.0268% PBS, 2.9% Sodium chloride
精製度	Protein A purified

ポリ/モノ	モノクローナル
クローン名	8G9
ミエローマ	x63-Ag8.653
アイソタイプ	IgG1
軽鎖の種類	kappa

アプリケーション

The Abpromise guarantee **Abpromise保証は、次のテスト済みアプリケーションにおけるab26278の使用に適用されます**

アプリケーションノートには、推奨の開始希釈率がありますが、適切な希釈率につきましてはご検討ください。

アプリケーション	Abreviews	特記事項
IHC-P		1/2000. Fix in 4% paraformaldehyde in 0.1 phosphate buffer, pH 7.4 overnight at 4°C.
Sandwich ELISA		Use at an assay dependent concentration. Can be paired for Sandwich ELISA with <u>Mouse monoclonal [10] to GLP-1 (ab121057)</u> and <u>Mouse monoclonal [4F3] to GLP-1 (ab23472)</u> .

ターゲット情報

機能

Glucagon plays a key role in glucose metabolism and homeostasis. Regulates blood glucose by increasing gluconeogenesis and decreasing glycolysis. A counterregulatory hormone of insulin, raises plasma glucose levels in response to insulin-induced hypoglycemia. Plays an important role in initiating and maintaining hyperglycemic conditions in diabetes.

GLP-1 is a potent stimulator of glucose-dependent insulin release. Play important roles on gastric motility and the suppression of plasma glucagon levels. May be involved in the suppression of satiety and stimulation of glucose disposal in peripheral tissues, independent of the actions of insulin. Have growth-promoting activities on intestinal epithelium. May also regulate the hypothalamic pituitary axis (HPA) via effects on LH, TSH, CRH, oxytocin, and vasopressin secretion. Increases islet mass through stimulation of islet neogenesis and pancreatic beta cell proliferation. Inhibits beta cell apoptosis.

GLP-2 stimulates intestinal growth and up-regulates villus height in the small intestine, concomitant with increased crypt cell proliferation and decreased enterocyte apoptosis. The gastrointestinal tract, from the stomach to the colon is the principal target for GLP-2 action. Plays a key role in nutrient homeostasis, enhancing nutrient assimilation through enhanced gastrointestinal function, as well as increasing nutrient disposal. Stimulates intestinal glucose transport and decreases mucosal permeability.

Oxyntomodulin significantly reduces food intake. Inhibits gastric emptying in humans. Suppression of gastric emptying may lead to increased gastric distension, which may contribute to satiety by causing a sensation of fullness.

Glicentin may modulate gastric acid secretion and the gastro-pyloro-duodenal activity. May play an important role in intestinal mucosal growth in the early period of life.

組織特異性

Glucagon is secreted in the A cells of the islets of Langerhans. GLP-1, GLP-2, oxyntomodulin and glicentin are secreted from enteroendocrine cells throughout the gastrointestinal tract. GLP1 and

配列類似性

翻訳後修飾

細胞内局在

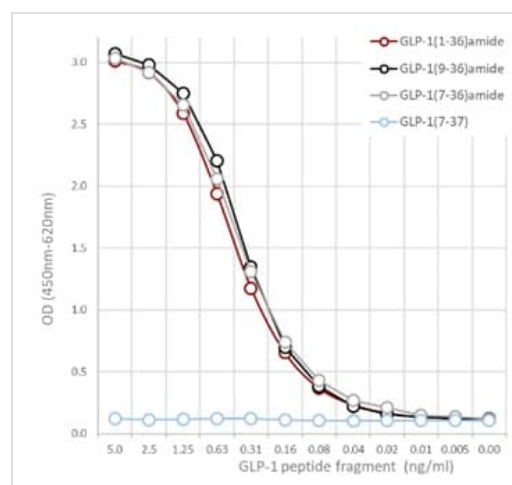
GLP2 are also secreted in selected neurons in the brain.

Belongs to the glucagon family.

Proglucagon is post-translationally processed in a tissue-specific manner in pancreatic A cells and intestinal L cells. In pancreatic A cells, the major bioactive hormone is glucagon cleaved by PCSK2/PC2. In the intestinal L cells PCSK1/PC1 liberates GLP-1, GLP-2, glicentin and oxyntomodulin. GLP-1 is further N-terminally truncated by post-translational processing in the intestinal L cells resulting in GLP-1(7-37) GLP-1-(7-36)amide. The C-terminal amidation is neither important for the metabolism of GLP-1 nor for its effects on the endocrine pancreas.

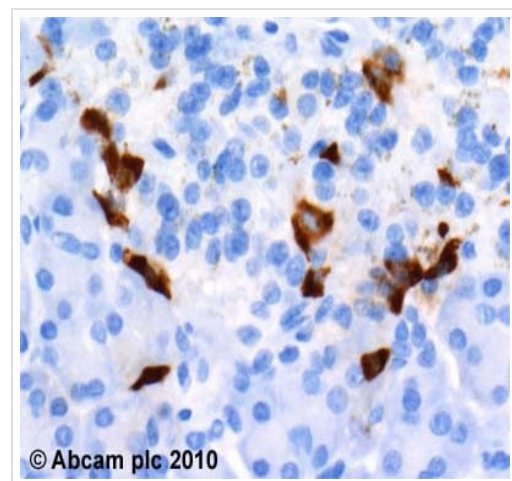
Secreted.

画像



Sandwich ELISA - Anti-GLP-1 antibody [8G9]
(ab26278)

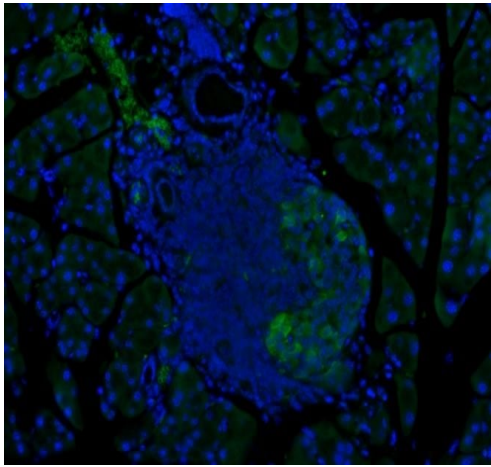
Sandwich ELISA graph showing GLP-1 (1-36)amide, GLP-1 (9-36)amide, and GLP-1 (7-36)amide detection using ab26278 as capture antibody and biotinylated [ab23468](#) detection antibody.



Immunohistochemistry (Formalin/PFA-fixed paraffin-embedded sections) - Anti-GLP-1 antibody [8G9]
(ab26278)

ab26278 (1µg/ml) staining GLP-1 in Human pancreas, using an automated system (DAKO Autostainer Plus). Using this protocol there is strong cytoplasmic staining.

Sections were rehydrated and antigen retrieved with the Dako 3 in 1 AR buffer citrate pH6.1 in a DAKO PT link. Slides were peroxidase blocked in 3% H₂O₂ in methanol for 10 mins. They were then blocked with Dako Protein block for 10 minutes (containing casein 0.25% in PBS) then incubated with primary antibody for 20 min and detected with Dako envision flex amplification kit for 30 minutes. Colorimetric detection was completed with Diaminobenzidine for 5 minutes. Slides were counterstained with Haematoxylin and coverslipped under DePeX. Please note that, for manual staining, optimization of primary antibody concentration and incubation time is recommended. Signal amplification may be required.



Immunofluorescence analysis of diabetic mice pancreas tissue stained for GLP-1 using ab26278 at 1/500 dilution.

Immunohistochemistry (Formalin/PFA-fixed paraffin-embedded sections) - Anti-GLP-1 antibody [8G9] (ab26278)

Please note: All products are "FOR RESEARCH USE ONLY. NOT FOR USE IN DIAGNOSTIC PROCEDURES"

Our Abpromise to you: Quality guaranteed and expert technical support

- Replacement or refund for products not performing as stated on the datasheet
- Valid for 12 months from date of delivery
- Response to your inquiry within 24 hours
- We provide support in Chinese, English, French, German, Japanese and Spanish
- Extensive multi-media technical resources to help you
- We investigate all quality concerns to ensure our products perform to the highest standards

If the product does not perform as described on this datasheet, we will offer a refund or replacement. For full details of the Abpromise, please visit <https://www.abcam.co.jp/abpromise> or contact our technical team.

Terms and conditions

- Guarantee only valid for products bought direct from Abcam or one of our authorized distributors