


Anti-GLO1 antibody ab96032

★★★★★ [3 Abreviews](#) [19 References](#) [画像数 3](#)

製品の概要

製品名	Anti-GLO1 antibody
製品の詳細	Rabbit polyclonal to GLO1
由来種	Rabbit
アプリケーション	適用あり: WB, IHC-P, ICC/IF
種交差性	交差種: Human 交差が予測される動物種: Mouse, Cow 
免疫原	Recombinant protein fragment corresponding to a region within amino acids 1 and 171 of GLO1 (NP_006699).
ポジティブ・コントロール	WB: 293T, A431, H1299, HeLaS3, HepG2, MOLT and Raji cell lysates IHC-P: ovarian carcinoma tissue ICC/IF: HeLa cells
特記事項	<p>The Life Science industry has been in the grips of a reproducibility crisis for a number of years. Abcam is leading the way in addressing this with our range of recombinant monoclonal antibodies and knockout edited cell lines for gold-standard validation. Please check that this product meets your needs before purchasing.</p> <p>If you have any questions, special requirements or concerns, please send us an inquiry and/or contact our Support team ahead of purchase. Recommended alternatives for this product can be found below, along with publications, customer reviews and Q&As</p>

製品の特性

製品の状態	Liquid
保存方法	Shipped at 4°C. Upon delivery aliquot and store at -20°C or -80°C. Avoid repeated freeze / thaw cycles.
バッファー	pH: 7.00 Preservative: 0.025% Proclin 300 Constituents: 79% PBS, 20% Glycerol (glycerin, glycerine)
精製度	Immunogen affinity purified
ポリ/モノ	ポリクローナル
アイソタイプ	IgG

アプリケーション

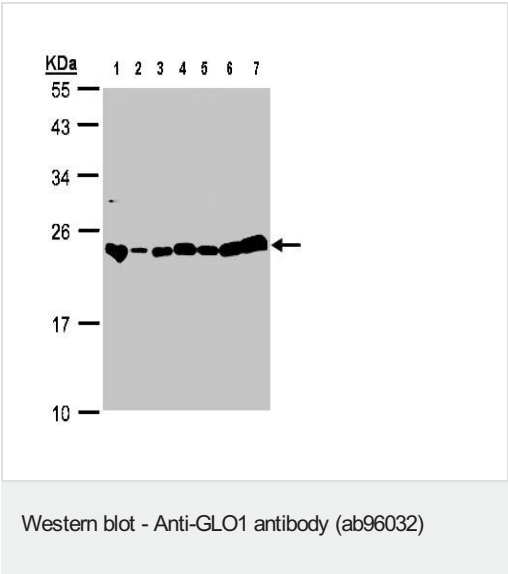
The Abpromise guarantee Abpromise保証は、 次のテスト済みアプリケーションにおけるab96032の使用に適用されます
アプリケーションノートには、推奨の開始希釈率がありますが、適切な希釈率につきましてはご確認ください。

アプリケーション	Abreviews	特記事項
WB		1/500 - 1/3000. Predicted molecular weight: 21 kDa.
IHC-P	★★★★★ (2)	1/100 - 1/250.
ICC/IF		1/100 - 1/200.

ターゲット情報

機能	Catalyzes the conversion of hemimercaptal, formed from methylglyoxal and glutathione, to S-lactoylglutathione.
パスウェイ	Secondary metabolite metabolism; methylglyoxal degradation; (R)-lactate from methylglyoxal: step 1/2.
配列類似性	Belongs to the glyoxalase I family.

画像



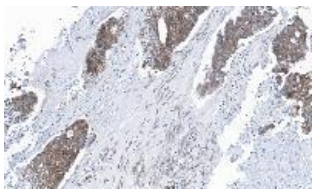
All lanes : Anti-GLO1 antibody (ab96032) at 1/1000 dilution

- Lane 1 : 293T whole cell lysate
- Lane 2 : A431 whole cell lysate
- Lane 3 : H1299 whole cell lysate
- Lane 4 : HeLa whole cell lysate
- Lane 5 : HepG2 whole cell lysate
- Lane 6 : MOLT4 whole cell lysate
- Lane 7 : Raji whole cell lysate

Lysates/proteins at 30 µg per lane.

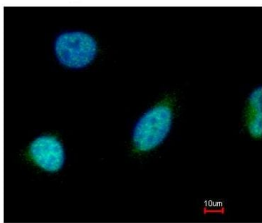
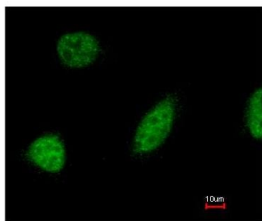
Predicted band size: 21 kDa

12% SDS PAGE



Immunohistochemistry (Formalin/PFA-fixed paraffin-embedded sections) - Anti-GLO1 antibody (ab96032)

Immunohistochemical analysis of GLO1 in paraffin embedded human ovarian carcinoma tissue, using ab96032 at a 1/100 dilution.



Immunocytochemistry/ Immunofluorescence - Anti-GLO1 antibody (ab96032)

Immunofluorescence analysis of GLO1 in paraformaldehyde fixed HeLa, using ab96032 at a 1/200 dilution. Lower image: merged with DNA probe.

Please note: All products are "FOR RESEARCH USE ONLY. NOT FOR USE IN DIAGNOSTIC PROCEDURES"

Our Abpromise to you: Quality guaranteed and expert technical support

- Replacement or refund for products not performing as stated on the datasheet
- Valid for 12 months from date of delivery
- Response to your inquiry within 24 hours
- We provide support in Chinese, English, French, German, Japanese and Spanish
- Extensive multi-media technical resources to help you
- We investigate all quality concerns to ensure our products perform to the highest standards

If the product does not perform as described on this datasheet, we will offer a refund or replacement. For full details of the Abpromise, please visit <https://www.abcam.co.jp/abpromise> or contact our technical team.

Terms and conditions

- Guarantee only valid for products bought direct from Abcam or one of our authorized distributors