

### Anti-GLO1 antibody [6F10] ab81461

KO 評価済

★★★★☆ [3 Abreviews](#) [11 References](#) [画像数 4](#)

#### 製品の概要

製品名	Anti-GLO1 antibody [6F10]
製品の詳細	Rat monoclonal [6F10] to GLO1
由来種	Rat
アプリケーション	<b>適用あり:</b> Flow Cyt (Intra), ICC/IF, WB
種交差性	<b>交差種:</b> Mouse, Human, African green monkey
免疫原	Recombinant full length protein. This information is proprietary to Abcam and/or its suppliers.
ポジティブ・コントロール	WB: COS-1, L929 and HeLa whole cell extracts. ICC/IF: Hela cells. HeLa cells : Flow Cyt (Intra).
特記事項	<p>ab81461 also reacts with Simian.</p> <p>The Life Science industry has been in the grips of a reproducibility crisis for a number of years. Abcam is leading the way in addressing this with our range of recombinant monoclonal antibodies and knockout edited cell lines for gold-standard validation. Please check that this product meets your needs before purchasing.</p> <p>If you have any questions, special requirements or concerns, please send us an inquiry and/or contact our Support team ahead of purchase. Recommended alternatives for this product can be found below, along with publications, customer reviews and Q&amp;As</p>

#### 製品の特性

製品の状態	Liquid
保存方法	Shipped at 4°C. Upon delivery aliquot and store at -20°C. Avoid repeated freeze / thaw cycles.
バッファー	pH: 6 Constituents: 50% Glycerol (glycerin, glycerine), PBS
特記事項 (精製)	The antibody was produced from the hybridoma cultured in serum free medium and purified under mild conditions by propriety chromatography processes. It is filter sterilized.
一次抗体 備考	ab81461 also reacts with Simian.
ポリ/モノ	モノクローナル
クローン名	6F10

アイソタイプ	IgG2b
軽鎖の種類	kappa

## アプリケーション

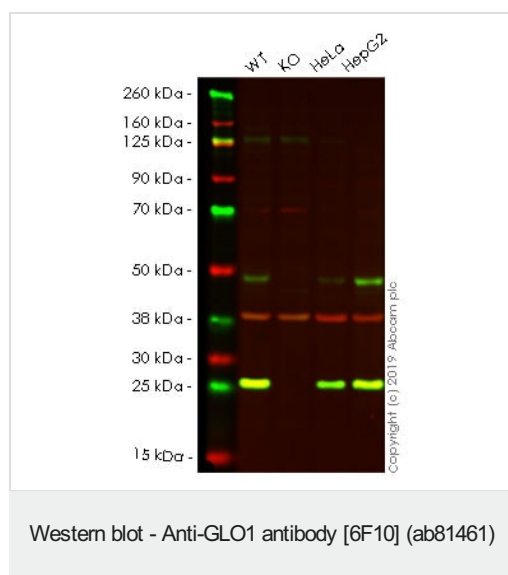
**The Abpromise guarantee** **Abpromise保証は、** 次のテスト済みアプリケーションにおけるab81461の使用に適用されます  
アプリケーションノートには、推奨の開始希釈率がありますが、適切な希釈率につきましてはご検討ください。

アプリケーション	Abreviews	特記事項
Flow Cyt (Intra)		Use 1µg for 10 <sup>6</sup> cells. <b>ab18536</b> - Rat monoclonal IgG2b, is suitable for use as an isotype control with this antibody.
ICC/IF		Use at an assay dependent concentration.
WB		1/1000. Predicted molecular weight: 21 kDa.

## ターゲット情報

機能	Catalyzes the conversion of hemimercaptal, formed from methylglyoxal and glutathione, to S-lactoylglutathione.
パスウェイ	Secondary metabolite metabolism; methylglyoxal degradation; (R)-lactate from methylglyoxal: step 1/2.
配列類似性	Belongs to the glyoxalase I family.

## 画像



**All lanes :** Anti-GLO1 antibody [6F10] (ab81461) at 1/1000 dilution

**Lane 1 :** Wild-type HAP1 whole cell lysate

**Lane 2 :** GLO1 knockout HAP1 whole cell lysate

**Lane 3 :** HeLa whole cell lysate

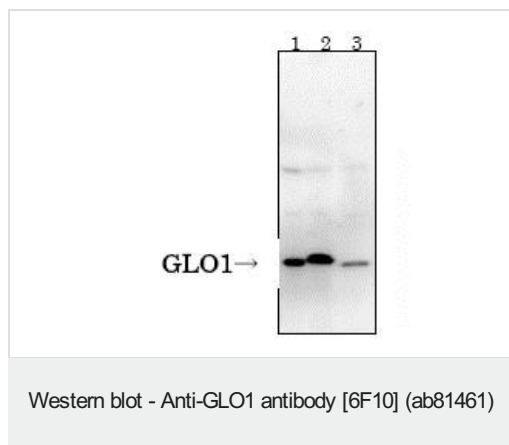
**Lane 4 :** HepG2 whole cell lysate

Lysates/proteins at 20 µg per lane.

**Predicted band size:** 21 kDa

**Lanes 1 - 4:** Merged signal (red and green). Green - ab81461 observed at 21 kDa. Red - loading control, **ab181602**, observed at 37 kDa.

ab81461 was shown to specifically react with in wild-type HAP1 cells as signal was lost in GLO1 knockout cells. Wild-type and GLO1 knockout samples were subjected to SDS-PAGE. The membrane was blocked with 3% Milk. Ab81461 and **ab181602** (Rabbit anti-GAPDH loading control) were incubated overnight at 4°C at 1/1000 dilution and 1/20000 dilution respectively. Blots were developed with Goat anti-Rat IgG H&L (IRDye® 800CW) preabsorbed and Goat anti-Rabbit IgG H&L (IRDye® 680RD) preabsorbed **ab216777** secondary antibodies at 1/20000 dilution for 1 hour at room temperature before imaging.



**All lanes :** Anti-GLO1 antibody [6F10] (ab81461)

**Lane 1 :** COS-1 (simian) whole cell extract

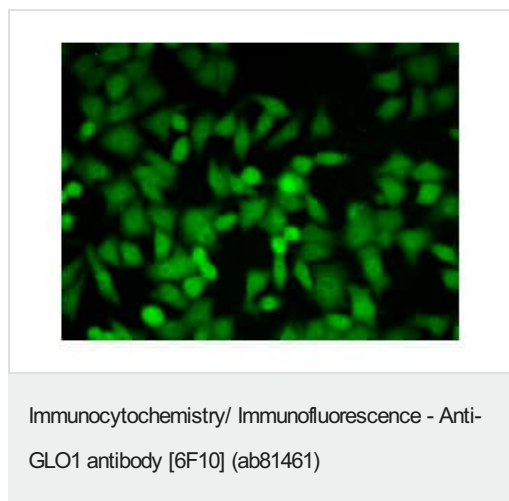
**Lane 2 :** L929 (mouse) whole cell extract

**Lane 3 :** HeLa (human) whole cell extract

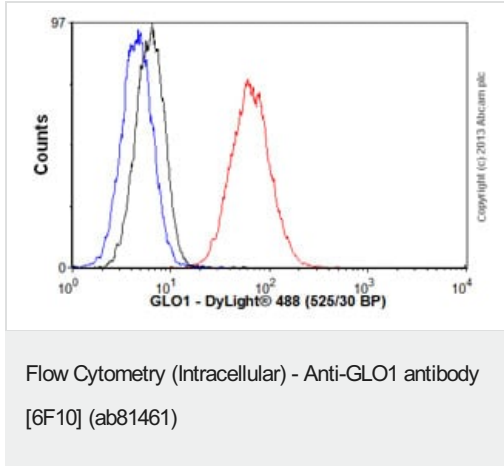
**Predicted band size:** 21 kDa

**Observed band size:** 27-29 kDa

Mouse GLO1 shows a single band of 27 kDa while human and simian ones show 29 kDa.



Immunofluorescent staining of HeLa cells with ab81461.



Overlay histogram showing HeLa cells stained with ab81461 (red line). The cells were fixed with 80% methanol (5 min) and then permeabilized with 0.1% PBS-Tween for 20 min. The cells were then incubated in 1x PBS / 10% normal goat serum / 0.3M glycine to block non-specific protein-protein interactions followed by the antibody (ab81461, 1µg/1x10<sup>6</sup> cells) for 30 min at 22°C. The secondary antibody used was DyLight® 488 goat anti-rat IgG (H+L) (**ab98386**) at 1/500 dilution for 30 min at 22°C. Isotype control antibody (black line) was rat IgG2b [RTK4530] (**ab18541**, 1µg/1x10<sup>6</sup> cells) used under the same conditions. Unlabelled sample (blue line). Acquisition of >5,000 events were collected using a 20mW Argon ion laser (488nm) and 525/30 bandpass filter.

**Please note:** All products are "FOR RESEARCH USE ONLY. NOT FOR USE IN DIAGNOSTIC PROCEDURES"

### Our Abpromise to you: Quality guaranteed and expert technical support

- Replacement or refund for products not performing as stated on the datasheet
- Valid for 12 months from date of delivery
- Response to your inquiry within 24 hours
- We provide support in Chinese, English, French, German, Japanese and Spanish
- Extensive multi-media technical resources to help you
- We investigate all quality concerns to ensure our products perform to the highest standards

If the product does not perform as described on this datasheet, we will offer a refund or replacement. For full details of the Abpromise, please visit <https://www.abcam.co.jp/abpromise> or contact our technical team.

### Terms and conditions

- Guarantee only valid for products bought direct from Abcam or one of our authorized distributors