

Anti-GFM1 antibody [EPR12263] ab171945

リコンビナント **RabMAb**

1 References [画像数 4](#)

製品の概要

製品名	Anti-GFM1 antibody [EPR12263]
製品の詳細	Rabbit monoclonal [EPR12263] to GFM1
由来種	Rabbit
アプリケーション	適用あり: WB, IHC-P 適用なし: Flow Cyt or IP
種交差性	交差種: Human 非交差種: Mouse, Rat
免疫原	Recombinant fragment within Human GFM1. The exact sequence is proprietary. Database link: Q96RP9
ポジティブ・コントロール	HeLa, NCIH460, U87 MG and 293T cell lysates; Human cervical carcinoma tissue and Human kidney tissue.
特記事項	This product is a recombinant monoclonal antibody, which offers several advantages including: <ul style="list-style-type: none"> - High batch-to-batch consistency and reproducibility - Improved sensitivity and specificity - Long-term security of supply - Animal-free production For more information see here . Our RabMAb [®] technology is a patented hybridoma-based technology for making rabbit monoclonal antibodies. For details on our patents, please refer to RabMAb[®] patents .

製品の特性

製品の状態	Liquid
保存方法	Shipped at 4°C. Store at +4°C short term (1-2 weeks). Upon delivery aliquot. Store at -20°C long term. Avoid freeze / thaw cycle.
バッファー	pH: 7.20 Preservative: 0.01% Sodium azide Constituents: 9% PBS, 40% Glycerol (glycerin, glycerine), 0.05% BSA, 50% Tissue culture supernatant
精製度	Tissue culture supernatant

ポリ/モノ	モノクローナル
クローン名	EPR12263
アイソタイプ	IgG

アプリケーション

The Abpromise guarantee **Abpromise保証は、**次のテスト済みアプリケーションにおけるab171945の使用に適用されます
アプリケーションノートには、推奨の開始希釈率がありますが、適切な希釈率につきましてはご検討ください。

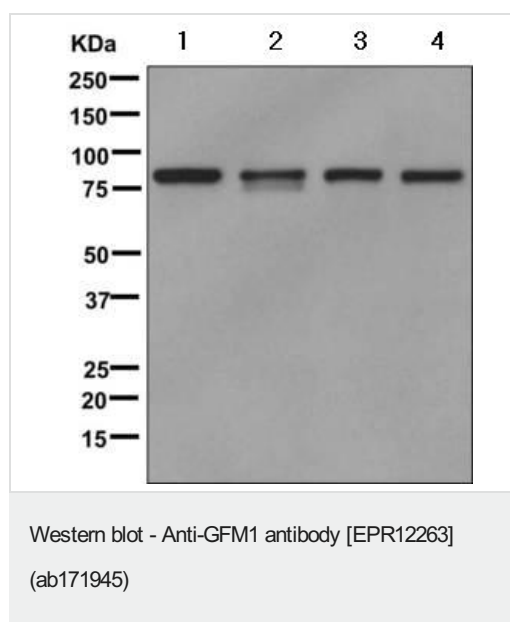
アプリケーション	Abreviews	特記事項
WB		1/10000 - 1/50000. Predicted molecular weight: 83 kDa.
IHC-P		1/50 - 1/100. Perform heat mediated antigen retrieval with citrate buffer pH 6 before commencing with IHC staining protocol.

追加情報 Is unsuitable for Flow Cyt or IP.

ターゲット情報

機能	Mitochondrial GTPase that catalyzes the GTP-dependent ribosomal translocation step during translation elongation. During this step, the ribosome changes from the pre-translocational (PRE) to the post-translocational (POST) state as the newly formed A-site-bound peptidyl-tRNA and P-site-bound deacylated tRNA move to the P and E sites, respectively. Catalyzes the coordinated movement of the two tRNA molecules, the mRNA and conformational changes in the ribosome. Does not mediate the disassembly of ribosomes from messenger RNA at the termination of mitochondrial protein biosynthesis.
パスウェイ	Protein biosynthesis; polypeptide chain elongation.
関連疾患	Defects in GFM1 are the cause of combined oxidative phosphorylation deficiency type 1 (COXPD1) [MIM:609060]. It leads to early fatal progressive hepatoencephalopathy.
配列類似性	Belongs to the GTP-binding elongation factor family. EF-G/EF-2 subfamily.
細胞内局在	Mitochondrion.

画像



All lanes : Anti-GFM1 antibody [EPR12263] (ab171945) at 1/10000 dilution

Lane 1 : HeLa cell lysate

Lane 2 : NCI 460 cell line lysate

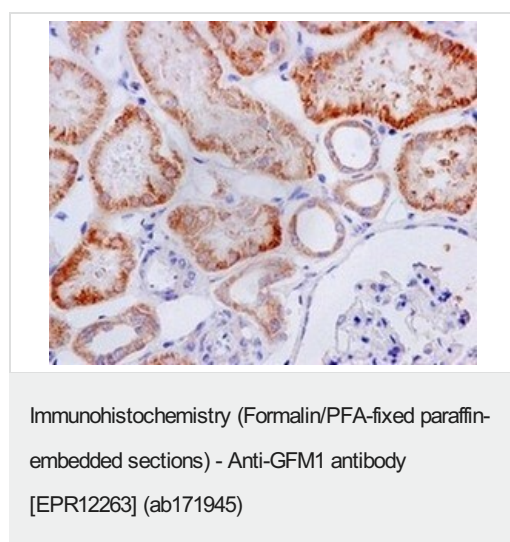
Lane 3 : U-87 MG (Human glioblastoma-astrocytoma epithelial cell line) cell lysate

Lane 4 : 293T (Human embryonic kidney epithelial cell) cell lysate

Lysates/proteins at 10 µg per lane.

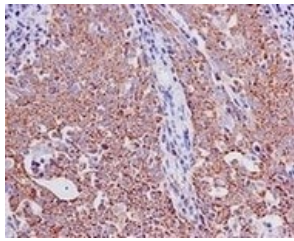
Developed using the ECL technique.

Predicted band size: 83 kDa



Immunohistochemical analysis of paraffin embedded Human kidney tissue labeling GFM1 with ab171945 at 1/50

Perform heat mediated antigen retrieval with citrate buffer pH 6 before commencing with IHC staining protocol.



Immunohistochemical analysis of paraffin embedded Human cervical carcinoma tissue labeling GFM1 with ab171945 at 1/50.

Perform heat mediated antigen retrieval with citrate buffer pH 6 before commencing with IHC staining protocol.

Immunohistochemistry (Formalin/PFA-fixed paraffin-embedded sections) - Anti-GFM1 antibody [EPR12263] (ab171945)

Why choose a recombinant antibody?



Research with confidence
Consistent and reproducible results



Long-term and scalable supply
Recombinant technology



Success from the first experiment
Confirmed specificity



Ethical standards compliant
Animal-free production

Anti-GFM1 antibody [EPR12263] (ab171945)

Please note: All products are "FOR RESEARCH USE ONLY. NOT FOR USE IN DIAGNOSTIC PROCEDURES"

Our Abpromise to you: Quality guaranteed and expert technical support

- Replacement or refund for products not performing as stated on the datasheet
- Valid for 12 months from date of delivery
- Response to your inquiry within 24 hours
- We provide support in Chinese, English, French, German, Japanese and Spanish
- Extensive multi-media technical resources to help you
- We investigate all quality concerns to ensure our products perform to the highest standards

If the product does not perform as described on this datasheet, we will offer a refund or replacement. For full details of the Abpromise, please visit <https://www.abcam.co.jp/abpromise> or contact our technical team.

Terms and conditions

- Guarantee only valid for products bought direct from Abcam or one of our authorized distributors