

Anti-Gemin 2 antibody [2E17] ab6084

★★★★★ [1 Abreviews](#) [10 References](#) [画像数 1](#)

製品の概要

製品名	Anti-Gemin 2 antibody [2E17]
製品の詳細	Mouse monoclonal [2E17] to Gemin 2
由来種	Mouse
アプリケーション	適用あり: Flow Cyt
種交差性	交差種: Human
免疫原	His-Gemin 2 fusion protein (amino acids 12 - 280, starting at 2nd methionine).
特記事項	<p>Involved in biogenesis of spliceosomal snRNPs, forms complex with Survival of Motor Neurons (SMN) protein, interacts tightly with spliceosomal proteins and spliceosomal snRNAs U1 and U5.</p> <p>The Life Science industry has been in the grips of a reproducibility crisis for a number of years. Abcam is leading the way in addressing this with our range of recombinant monoclonal antibodies and knockout edited cell lines for gold-standard validation. Please check that this product meets your needs before purchasing.</p> <p>If you have any questions, special requirements or concerns, please send us an inquiry and/or contact our Support team ahead of purchase. Recommended alternatives for this product can be found below, along with publications, customer reviews and Q&As</p>

製品の特性

製品の状態	Liquid
保存方法	Shipped at 4°C. Store at +4°C short term (1-2 weeks). Upon delivery aliquot. Store at -20°C or -80°C. Avoid freeze / thaw cycle.
バッファー	Preservative: 0.1% Sodium azide Constituent: PBS
精製度	Protein A purified
特記事項 (精製)	Purified from supernatant.
一次抗体 備考	Involved in biogenesis of spliceosomal snRNPs, forms complex with Survival of Motor Neurons (SMN) protein, interacts tightly with spliceosomal proteins and spliceosomal snRNAs U1 and U5.
ポリ/モノ	モノクローナル
クローン名	2E17

ミエローマ	Sp2/0
アイソタイプ	IgG1

アプリケーション

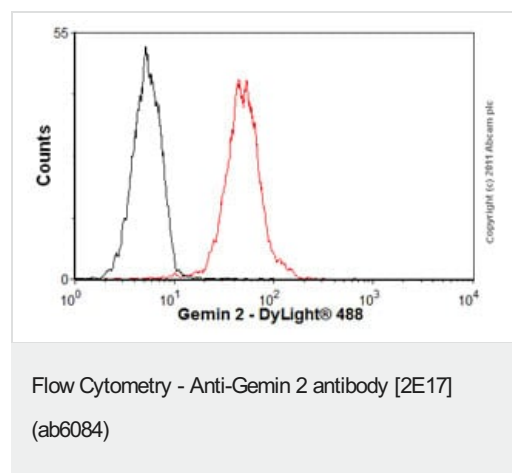
The Abpromise guarantee Abpromise保証は、次のテスト済みアプリケーションにおけるab6084の使用に適用されます
アプリケーションノートには、推奨の開始希釈率がありますが、適切な希釈率につきましてはご検討ください。

アプリケーション	Abreviews	特記事項
Flow Cyt		Use 1µg for 10 ⁶ cells. <u>ab170190</u> - Mouse monoclonal IgG1, is suitable for use as an isotype control with this antibody.

ターゲット情報

機能	The SMN complex plays an essential role in spliceosomal snRNP assembly in the cytoplasm and is required for pre-mRNA splicing in the nucleus.
配列類似性	Belongs to the gemin-2 family.
細胞内局在	Nucleus > gem. Cytoplasm. Localized in subnuclear structures next to coiled bodies, called gems, which are highly enriched in spliceosomal snRNPs. Also found in the cytoplasm.

画像



Overlay histogram showing HeLa cells stained with ab6084 (red line). The cells were fixed with 80% methanol (5 min) and then permeabilized with 0.1% PBS-Tween for 20 min. The cells were then incubated in 1x PBS / 10% normal goat serum / 0.3M glycine to block non-specific protein-protein interactions followed by the antibody (ab6084, 1µg/1x10⁶ cells) for 30 min at 22°C. The secondary antibody used was DyLight® 488 goat anti-mouse IgG (H+L) (**ab96879**) at 1/500 dilution for 30 min at 22°C. Isotype control antibody (black line) was mouse IgG1 [ICIGG1] (**ab91353**, 2µg/1x10⁶ cells) used under the same conditions. Acquisition of >5,000 events was performed.

Please note: All products are "FOR RESEARCH USE ONLY. NOT FOR USE IN DIAGNOSTIC PROCEDURES"

Our Abpromise to you: Quality guaranteed and expert technical support

- Replacement or refund for products not performing as stated on the datasheet
- Valid for 12 months from date of delivery

- Response to your inquiry within 24 hours
- We provide support in Chinese, English, French, German, Japanese and Spanish
- Extensive multi-media technical resources to help you
- We investigate all quality concerns to ensure our products perform to the highest standards

If the product does not perform as described on this datasheet, we will offer a refund or replacement. For full details of the Abpromise, please visit <https://www.abcam.co.jp/abpromise> or contact our technical team.

Terms and conditions

- Guarantee only valid for products bought direct from Abcam or one of our authorized distributors