

Anti-GEMC1 antibody ab112571

★★★★☆ **2 Abreviews** [画像数 1](#)

製品の概要

製品名	Anti-GEMC1 antibody
製品の詳細	Rabbit polyclonal to GEMC1
由来種	Rabbit
アプリケーション	適用あり: WB
種交差性	交差種: Mouse
免疫原	Synthetic peptide corresponding to Human GEMC1 (internal sequence). A 19 amino acid peptide corresponding to an internal sequence of Human GEMC1 (NP_001140158). Database link: A6NCL1
ポジティブ・コントロール	Mouse Heart tissue lysate.
特記事項	<p>The Life Science industry has been in the grips of a reproducibility crisis for a number of years. Abcam is leading the way in addressing this with our range of recombinant monoclonal antibodies and knockout edited cell lines for gold-standard validation. Please check that this product meets your needs before purchasing.</p> <p>If you have any questions, special requirements or concerns, please send us an inquiry and/or contact our Support team ahead of purchase. Recommended alternatives for this product can be found below, along with publications, customer reviews and Q&As</p>

製品の特性

製品の状態	Liquid
保存方法	Shipped at 4°C. Store at +4°C.
バッファー	pH: 7.2 Preservative: 0.02% Sodium azide Constituent: 99% PBS
精製度	Immunogen affinity purified
特記事項(精製)	ab112571 is purified by affinity chromatography purified via peptide column.
ポリ/モノ	ポリクローナル
アイソタイプ	IgG

アプリケーション

The Abpromise guarantee

Abpromise保証は、次のテスト済みアプリケーションにおけるab112571の使用に適用されます
アプリケーションノートには、推奨の開始希釈率がありますが、適切な希釈率につきましてはご確認ください。

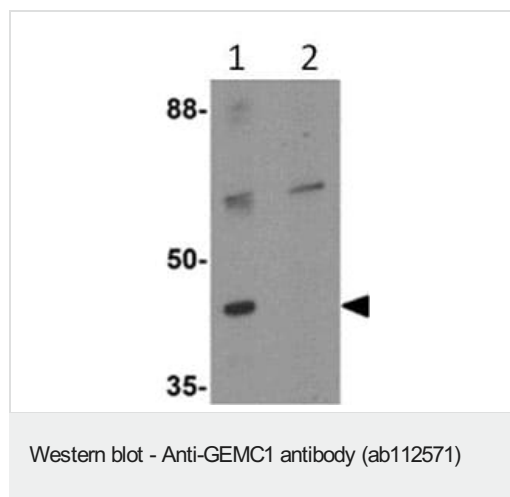
アプリケーション	Abreviews	特記事項
WB		Use a concentration of 1 - 2 µg/ml. Predicted molecular weight: 38 kDa.

ターゲット情報

関連性 Regulator of DNA replication. Promotes initiation of chromosomal DNA replication by mediating TOPBP1- and CDK2-dependent recruitment of CDC45L onto replication origins.

細胞内局在 Nuclear

画像



All lanes : Anti-GEMC1 antibody (ab112571) at 1 µg/ml

Lane 1 : Mouse heart tissue lysate

Lane 2 : Mouse heart tissue lysate with blocking peptide

Lysates/proteins at 15 µg per lane.

Predicted band size: 38 kDa

Please note: All products are "FOR RESEARCH USE ONLY. NOT FOR USE IN DIAGNOSTIC PROCEDURES"

Our Abpromise to you: Quality guaranteed and expert technical support

- Replacement or refund for products not performing as stated on the datasheet
- Valid for 12 months from date of delivery
- Response to your inquiry within 24 hours
- We provide support in Chinese, English, French, German, Japanese and Spanish
- Extensive multi-media technical resources to help you
- We investigate all quality concerns to ensure our products perform to the highest standards

If the product does not perform as described on this datasheet, we will offer a refund or replacement. For full details of the Abpromise, please visit <https://www.abcam.co.jp/abpromise> or contact our technical team.

Terms and conditions

- Guarantee only valid for products bought direct from Abcam or one of our authorized distributors