

Anti-Gelsolin plasma antibody [EPR1941Y] ab75832

リコンビナント RabMAb

7 References 画像数 5

製品の概要

製品名	Anti-Gelsolin plasma antibody [EPR1941Y]
製品の詳細	Rabbit monoclonal [EPR1941Y] to Gelsolin plasma
由来種	Rabbit
特異性	The antibody only detects the isoform 1 of the protein (86kDa).
アプリケーション	適用あり: WB, IP, IHC-P 適用なし: Flow Cyt or ICC/IF
種交差性	交差種: Mouse, Human
免疫原	Synthetic peptide. This information is proprietary to Abcam and/or its suppliers.
ポジティブ・コントロール	Human plasma
特記事項	<p>This product is a recombinant monoclonal antibody, which offers several advantages including:</p> <ul style="list-style-type: none">- High batch-to-batch consistency and reproducibility- Improved sensitivity and specificity- Long-term security of supply- Animal-free production <p>For more information see here.</p> <p>Our RabMAb[®] technology is a patented hybridoma-based technology for making rabbit monoclonal antibodies. For details on our patents, please refer to RabMAb[®] patents.</p> <p>Mouse, Rat: We have preliminary internal testing data to indicate this antibody may not react with these species. Please contact us for more information.</p>

製品の特性

製品の状態	Liquid
保存方法	Shipped at 4°C. Upon delivery aliquot and store at -20°C. Avoid freeze / thaw cycles.
バッファー	pH: 7.20 Preservative: 0.05% Sodium azide Constituents: 0.1% BSA, 40% Glycerol (glycerin, glycerine), 9.85% Tris glycine, 50% Tissue culture supernatant
精製度	Protein A purified

ポリ/モノ	モノクローナル
クローン名	EPR1941Y
アイソタイプ	IgG

アプリケーション

The Abpromise guarantee **Abpromise保証は、次のテスト済みアプリケーションにおけるab75832の使用に適用されます**
 アプリケーションノートには、推奨の開始希釈率がありますが、適切な希釈率につきましてはご検討ください。

アプリケーション	Abreviews	特記事項
WB		1/25000 - 1/50000. Detects a band of approximately 90 kDa (predicted molecular weight: 86 kDa).
IP		1/50.
IHC-P		1/100 - 1/250. Perform heat mediated antigen retrieval via the pressure cooker method before commencing with IHC staining protocol.

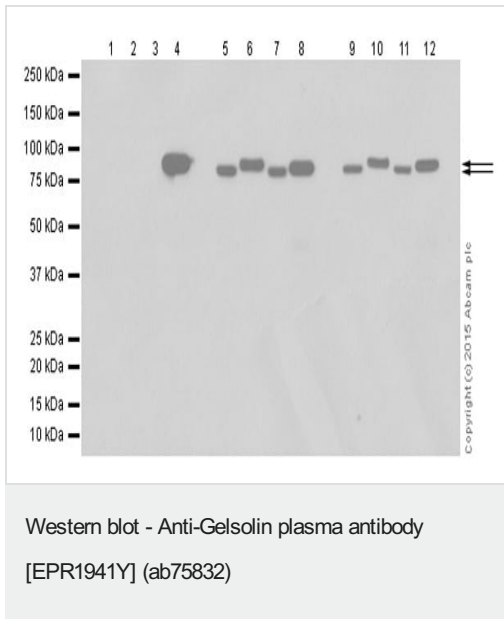
追加情報 Is unsuitable for Flow Cyt or ICC/IF.

ターゲット情報

関連性 Gelsolin is a calcium regulated, actin modulating protein that binds to the plus (or barbed) ends of actin monomers or filaments, preventing monomer exchange (end blocking or capping). It can promote the assembly of monomers into filaments (nucleation) as well as sever filaments already formed. It plays a role in phosphoinositide mediated disassembly of actin filaments in Sertoli cell adhesion complexes; it may regulate sperm release and turnover of the blood testis barrier [RGD], and severs actin filaments in the presence of submicromolar calcium, thereby solating cytoplasmic actin gels. A calcium independent mechanism reverses the process. Northern blot analysis suggested that a single gene encodes both cell and plasma gelsolins. This protein may be unique in that it is made for both secretion and intracytoplasmic location.

細胞内局在 Secreted

画像



Lanes 1-4 : Anti-Gelsolin plasma antibody [EPR1941Y] (ab75832) at 1/10000 dilution

Lanes 5-8 : Anti-Gelsolin antibody [EPR1942] ([ab109014](#)) at 1/20000 dilution

Lanes 9-12 : Anti-Gelsolin antibody [EP1940Y] ([ab134183](#)) at 1/10000 dilution

Lanes 1 & 5 & 9 : THP-1 (human acute monocytic leukemia) whole cell lysate

Lanes 2 & 6 & 10 : THP-1 cultured medium

Lanes 3 & 7 & 11 : MCF-7 (human breast adenocarcinoma) whole cell lysate

Lanes 4 & 8 & 12 : Human Plasma

Lysates/proteins at 10 µg per lane.

Secondary

All lanes : Goat Anti-Rabbit IgG H&L (HRP) ([ab97051](#)) at 1/20000 dilution

Predicted band size: 86 kDa

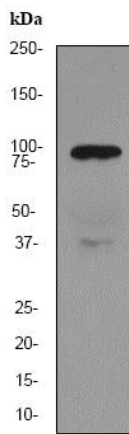
Observed band size: 81,86 kDa

Exposure time: 10 seconds

Blocking buffer 5% NFDM/TBST

Diluting buffer 5% NFDM/TBST

The secretory isoform of gelsolin is at 86kDa. The cytoplasmic isoforms of gelsolin are at 81kDa. Lane 5-8: [ab109014](#) detected both secretory and cytoplasmic isoforms. Lane 9-12: [ab134183](#) detected both secretory and cytoplasmic isoforms.



Western blot - Anti-Gelsolin plasma antibody [EPR1941Y] (ab75832)

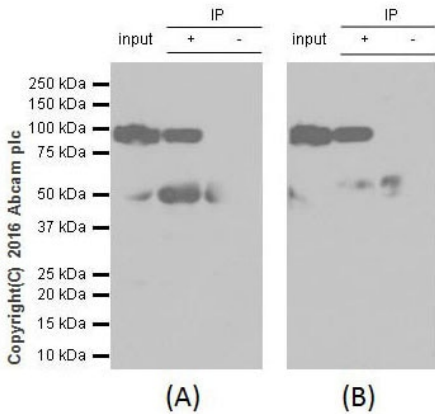
Anti-Gelsolin plasma antibody [EPR1941Y] (ab75832) at 1/50000 dilution + human plasma at 10 µg

Secondary

HRP labelled goat anti-rabbit at 1/2000 dilution

Predicted band size: 86 kDa

Observed band size: 90 kDa



Immunoprecipitation - Anti-Gelsolin plasma antibody [EPR1941Y] (ab75832)

ab75832 Immunoprecipitating Gelsolin plasma in mouse embryo whole cell lysate. 2µg of capture antibody (ab75832) per 0.35mg of lysate was used. 10µg of plasma was incubated with primary antibody (Panel A: ab75832, Panel B: **ab134183**) at a dilution of 1/1000 and VeriBlot for IP Detection Reagent (HRP) **ab131366** was used for detection at a dilution of 1/10000.

Lane 1: Human plasma

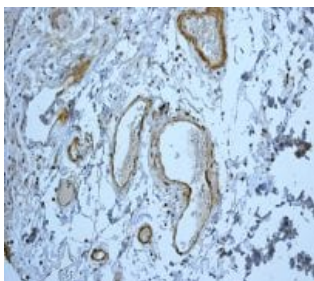
Lane 2: Human plasma

Lane 3: Rabbit monoclonal IgG (**ab172730**) instead of ab75832 in Human plasma.

Exposure time: Panel A - 8 seconds, Panel B - 3 minutes.

Blocking and dilution buffer and concentration: 5% NFDm/TBST.

The additional band at 50 kDa is a rabbit IgG heavy chain.



Immunohistochemistry (Formalin/PFA-fixed paraffin-embedded sections) - Anti-Gelsolin plasma antibody [EPR1941Y] (ab75832)

ab75832 at 1/100 dilution staining Gelsolin plasma in human colon tissue, using a HRP/AP polymerized secondary antibody.

Perform heat mediated antigen retrieval via the pressure cooker method before commencing with IHC staining protocol.

Why choose a recombinant antibody?



Research with confidence
Consistent and reproducible results



Long-term and scalable supply
Recombinant technology



Success from the first experiment
Confirmed specificity



Ethical standards compliant
Animal-free production

Anti-Gelsolin plasma antibody [EPR1941Y]
(ab75832)

Please note: All products are "FOR RESEARCH USE ONLY. NOT FOR USE IN DIAGNOSTIC PROCEDURES"

Our Abpromise to you: Quality guaranteed and expert technical support

- Replacement or refund for products not performing as stated on the datasheet
- Valid for 12 months from date of delivery
- Response to your inquiry within 24 hours
- We provide support in Chinese, English, French, German, Japanese and Spanish
- Extensive multi-media technical resources to help you
- We investigate all quality concerns to ensure our products perform to the highest standards

If the product does not perform as described on this datasheet, we will offer a refund or replacement. For full details of the Abpromise, please visit <https://www.abcam.co.jp/abpromise> or contact our technical team.

Terms and conditions

- Guarantee only valid for products bought direct from Abcam or one of our authorized distributors