

Anti-Gelsolin antibody ab74420

KO 評価済

★★★★☆ [3 Abreviews](#) [12 References](#) [画像数 2](#)

製品の概要

製品名	Anti-Gelsolin antibody
製品の詳細	Rabbit polyclonal to Gelsolin
由来種	Rabbit
アプリケーション	適用あり: WB 適用なし: ICC/IF
種交差性	交差種: Mouse, Rat, Human
免疫原	Synthetic peptide within Human Gelsolin aa 750 to the C-terminus (C terminal) conjugated to keyhole limpet haemocyanin. The exact sequence is proprietary. (Peptide available as ab74419)
ポジティブ・コントロール	Recombinant Human Gelsolin plasma protein (ab114279) can be used as a positive control in WB. This antibody gave a positive signal in the following tissue lysates: Rat Kidney, Mouse Spleen, Rat Thymus. HeLa cell lysate.
特記事項	<p>The Life Science industry has been in the grips of a reproducibility crisis for a number of years. Abcam is leading the way in addressing this with our range of recombinant monoclonal antibodies and knockout edited cell lines for gold-standard validation. Please check that this product meets your needs before purchasing.</p> <p>If you have any questions, special requirements or concerns, please send us an inquiry and/or contact our Support team ahead of purchase. Recommended alternatives for this product can be found below, along with publications, customer reviews and Q&As</p>

製品の特性

製品の状態	Liquid
保存方法	Shipped at 4°C. Store at +4°C short term (1-2 weeks). Upon delivery aliquot. Store at -20°C or -80°C. Avoid freeze / thaw cycle.
バッファー	pH: 7.40 Preservative: 0.02% Sodium azide Constituent: PBS

Batches of this product that have a concentration < 1mg/ml may have BSA added as a stabilising

agent. If you would like information about the formulation of a specific lot, please contact our scientific support team who will be happy to help.

精製度	Immunogen affinity purified
ポリ/モノ	ポリクローナル
アイソタイプ	IgG

アプリケーション

The Abpromise guarantee Abpromise保証は、次のテスト済みアプリケーションにおけるab74420の使用に適用されます
アプリケーションノートには、推奨の開始希釈率がありますが、適切な希釈率につきましてはご検討ください。

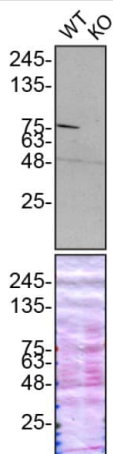
アプリケーション	Abreviews	特記事項
WB	★★★★★ (2)	Use a concentration of 1 µg/ml. Detects a band of approximately 86 kDa (predicted molecular weight: 86 kDa).

追加情報 Is unsuitable for ICC/IF.

ターゲット情報

機能	Calcium-regulated, actin-modulating protein that binds to the plus (or barbed) ends of actin monomers or filaments, preventing monomer exchange (end-blocking or capping). It can promote the assembly of monomers into filaments (nucleation) as well as sever filaments already formed. Plays a role in ciliogenesis.
組織特異性	Phagocytic cells, platelets, fibroblasts, nonmuscle cells, smooth and skeletal muscle cells.
関連疾患	Defects in GSN are the cause of amyloidosis type 5 (AMYL5) [MIM:105120]; also known as familial amyloidosis Finnish type. AMYL5 is a hereditary generalized amyloidosis due to gelsolin amyloid deposition. It is typically characterized by cranial neuropathy and lattice corneal dystrophy. Most patients have modest involvement of internal organs, but severe systemic disease can develop in some individuals causing peripheral polyneuropathy, amyloid cardiomyopathy, and nephrotic syndrome leading to renal failure.
配列類似性	Belongs to the villin/gelsolin family. Contains 6 gelsolin-like repeats.
翻訳後修飾	Phosphorylation on Tyr-86, Tyr-409, Tyr-465, Tyr-603 and Tyr-651 in vitro is induced in presence of phospholipids.
細胞内局在	Cytoplasm > cytoskeleton and Secreted.

画像



Western blot - Anti-Gelsolin antibody (ab74420)

All lanes : Anti-Gelsolin antibody (ab74420) at 1/20000 dilution

Lane 1 : Wild-type HeLa cell lysate

Lane 2 : GSN knockout HeLa cell lysate

Lysates/proteins at 20 µg per lane.

Performed under reducing conditions.

Predicted band size: 86 kDa

ab74420 was shown to react with GSN in wild-type HeLa cells in Western blot with loss of signal observed in GSN knockout cell line [ab265201](#) (GSN knockout cell lysate [ab257204](#)). Wild-type HeLa and GSN knockout cell lysates were subjected to SDS-PAGE. Membranes were blocked in 5% milk in TBST for 1 hr before incubation with ab74420 overnight at 4 °C at a 1/20000 dilution. Blots were incubated with goat anti-rabbit HRP secondary antibodies at 1/5000 before imaging. This data was kindly provided by the YCharOS Inc., an open science company with the mission of characterizing every commercially available antibody reagent. Abcam are working with YCharOS to support their mission of antibody characterisation using knockout cell lines.



Western blot - Anti-Gelsolin antibody (ab74420)

All lanes : Anti-Gelsolin antibody (ab74420) at 1 µg/ml

Lane 1 : Kidney (Rat) Tissue Lysate

Lane 2 : Spleen (Mouse) Tissue Lysate

Lane 3 : Thymus (Rat) Tissue Lysate

Lysates/proteins at 10 µg per lane.

Secondary

All lanes : Goat polyclonal to Rabbit IgG - H&L - Pre-Adsorbed (HRP) at 1/3000 dilution

Performed under reducing conditions.

Predicted band size: 86 kDa

Observed band size: 86 kDa

Additional bands at: 120 kDa, 140 kDa, 52 kDa. We are unsure as to the identity of these extra bands.

Exposure time: 3 minutes

Please note: All products are "FOR RESEARCH USE ONLY. NOT FOR USE IN DIAGNOSTIC PROCEDURES"

Our Abpromise to you: Quality guaranteed and expert technical support

- Replacement or refund for products not performing as stated on the datasheet
- Valid for 12 months from date of delivery
- Response to your inquiry within 24 hours
- We provide support in Chinese, English, French, German, Japanese and Spanish
- Extensive multi-media technical resources to help you
- We investigate all quality concerns to ensure our products perform to the highest standards

If the product does not perform as described on this datasheet, we will offer a refund or replacement. For full details of the Abpromise, please visit <https://www.abcam.co.jp/abpromise> or contact our technical team.

Terms and conditions

- Guarantee only valid for products bought direct from Abcam or one of our authorized distributors