

Anti-GDF6 antibody ab73288

★★★★★ [4 Abreviews](#) [2 References](#) [画像数 2](#)

製品の概要

製品名	Anti-GDF6 antibody
製品の詳細	Rabbit polyclonal to GDF6
由来種	Rabbit
アプリケーション	適用あり: WB
種交差性	交差種: Human
免疫原	A 17 amino acid peptide near the carboxy terminus of human GDF6.
ポジティブ・コントロール	SK-N-SH lysate.
特記事項	<p>The Life Science industry has been in the grips of a reproducibility crisis for a number of years. Abcam is leading the way in addressing this with our range of recombinant monoclonal antibodies and knockout edited cell lines for gold-standard validation. Please check that this product meets your needs before purchasing.</p> <p>If you have any questions, special requirements or concerns, please send us an inquiry and/or contact our Support team ahead of purchase. Recommended alternatives for this product can be found below, along with publications, customer reviews and Q&As</p>

製品の特性

製品の状態	Liquid
保存方法	Shipped at 4°C. Store at +4°C.
バッファー	pH: 7.2 Preservative: 0.02% Sodium azide Constituent: PBS
精製度	Immunogen affinity purified
ポリ/モノ	ポリクローナル
アイソタイプ	IgG

アプリケーション

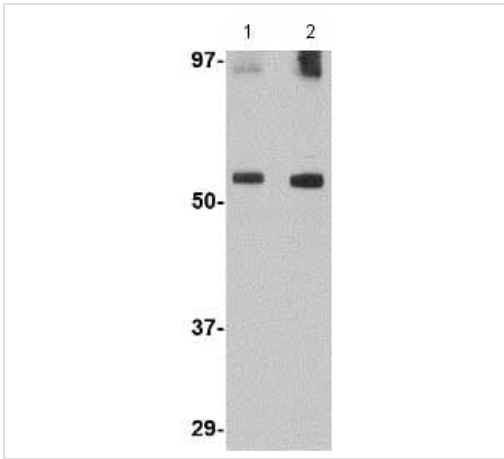
The Abpromise guarantee **Abpromise保証は、次のテスト済みアプリケーションにおけるab73288の使用に適用されます**
アプリケーションノートには、推奨の開始希釈率がありますが、適切な希釈率につきましてはご検討ください。

アプリケーション	Abreviews	特記事項
WB	★★★★★ (2)	Use a concentration of 0.5 - 1 µg/ml. Detects a band of approximately 55 kDa (predicted molecular weight: 51 kDa).

ターゲット情報

機能	Growth factor that controls proliferation and cellular differentiation in the retina and bone formation. Plays a key role in regulating apoptosis during retinal development. Establishes dorsal-ventral positional information in the retina and controls the formation of the retinotectal map (PubMed:23307924). Required for normal formation of bones and joints in the limbs, skull, digits and axial skeleton. Plays a key role in establishing boundaries between skeletal elements during development. Regulation of GDF6 expression seems to be a mechanism for evolving species-specific changes in skeletal structures. Seems to positively regulate differentiation of chondrogenic tissue through the growth factor receptors subunits BMPR1A, BMPR1B, BMPR2 and ACVR2A, leading to the activation of SMAD1-SMAD5-SMAD8 complex. The regulation of chondrogenic differentiation is inhibited by NOG (PubMed:26643732). Also involved in the induction of adipogenesis from mesenchymal stem cells. This mechanism acts through the growth factor receptors subunits BMPR1A, BMPR2 and ACVR2A and the activation of SMAD1-SMAD5-SMAD8 complex and MAPK14/p38.
関連疾患	Klippel-Feil syndrome 1, autosomal dominant A chromosomal aberration involving GDF6 has been found in a patient with Klippel-Feil syndrome (KFS). Paracentric inv(8)(q22;2q23.3). Microphthalmia, isolated, 4 Leber congenital amaurosis 17 Defects in POP1 may be the cause of multiple synostoses syndrome (SYNS). SYNS is a bone disease characterized by multiple progressive joint fusions that commonly involve proximal interphalangeal, tarsal-carpal joints. Additional features can include progressive conductive deafness.
配列類似性	Belongs to the TGF-beta family.
細胞内局在	Secreted.

画像



Western blot - Anti-GDF6 antibody (ab73288)

Lane 1 : Anti-GDF6 antibody (ab73288) at 0.5 µg/ml

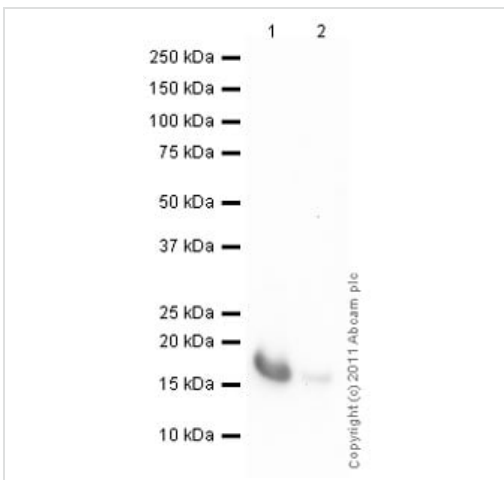
Lane 2 : Anti-GDF6 antibody (ab73288) at 1 µg/ml

All lanes : SK-N-SH lysate

Lysates/proteins at 15 µg per lane.

Predicted band size: 51 kDa

Observed band size: 55 kDa



Western blot - Anti-GDF6 antibody (ab73288)

All lanes : Anti-GDF6 antibody (ab73288) at 1 µg/ml

Lane 1 : Recombinant Human GDF6 protein ([ab50230](#)) at 0.1 µg

Lane 2 : Recombinant Human GDF6 protein ([ab50230](#)) at 0.01 µg

Secondary

All lanes : Goat Anti-Rabbit IgG H&L (HRP) preadsorbed

([ab97080](#)) at 1/5000 dilution

Developed using the ECL technique.

Performed under reducing conditions.

Predicted band size: 51 kDa

Exposure time: 30 seconds

[ab50230](#) is a homodimer consisting of two 120aa monomers. The homodimer format is expected to run at 27kDa, so the observed band is thought to be the monomer form.

Please note: All products are "FOR RESEARCH USE ONLY. NOT FOR USE IN DIAGNOSTIC PROCEDURES"

Our Abpromise to you: Quality guaranteed and expert technical support

- Replacement or refund for products not performing as stated on the datasheet
- Valid for 12 months from date of delivery
- Response to your inquiry within 24 hours

- We provide support in Chinese, English, French, German, Japanese and Spanish
- Extensive multi-media technical resources to help you
- We investigate all quality concerns to ensure our products perform to the highest standards

If the product does not perform as described on this datasheet, we will offer a refund or replacement. For full details of the Abpromise, please visit <https://www.abcam.co.jp/abpromise> or contact our technical team.

Terms and conditions

- Guarantee only valid for products bought direct from Abcam or one of our authorized distributors