


# Anti-GDF15 antibody ab105738

**2 References**   [画像数 1](#)

### 製品の概要

製品名	Anti-GDF15 antibody
製品の詳細	Rabbit polyclonal to GDF15
由来種	Rabbit
アプリケーション	<b>適用あり:</b> WB
種交差性	<b>交差種:</b> Mouse, Human <b>交差が予測される動物種:</b> Rat, Cow, Dog, Pig 
免疫原	Synthetic peptide corresponding to amino acids near the C-terminal of Mouse GDF15.
特記事項	<p>Expiration date is one (1) year from date of opening product.</p> <p>The Life Science industry has been in the grips of a reproducibility crisis for a number of years. Abcam is leading the way in addressing this with our range of recombinant monoclonal antibodies and knockout edited cell lines for gold-standard validation. Please check that this product meets your needs before purchasing.</p> <p>If you have any questions, special requirements or concerns, please send us an inquiry and/or contact our Support team ahead of purchase. Recommended alternatives for this product can be found below, along with publications, customer reviews and Q&amp;As</p>

### 製品の特性

製品の状態	Liquid
保存方法	Shipped at 4°C. Store at +4°C short term (1-2 weeks). Upon delivery aliquot. Store at -20°C or -80°C. Avoid freeze / thaw cycle.
バッファー	Preservative: 0.01% Sodium azide Constituents: 0.42% Potassium phosphate, 0.88% Sodium chloride
精製度	Protein A purified
特記事項(精製)	ab105738 is affinity purified from monospecific antiserum by immunoaffinity chromatography.
ポリ/モノ	ポリクローナル
アイソタイプ	IgG

### アプリケーション

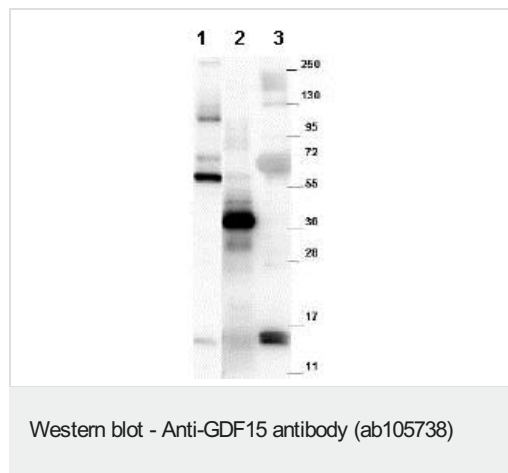
**The Abpromise guarantee**      Abpromise保証は、 次のテスト済みアプリケーションにおけるab105738の使用に適用されます  
アプリケーションノートには、推奨の開始希釈率がありますが、適切な希釈率につきましてはご検討ください。

アプリケーション	Abreviews	特記事項
WB		1/3000 - 1/7000. Predicted molecular weight: 33 kDa.

## ターゲット情報

組織特異性	Highly expressed in placenta, with lower levels in prostate and colon and some expression in kidney.
配列類似性	Belongs to the TGF-beta family.
細胞内局在	Secreted.

## 画像



**All lanes :** Anti-GDF15 antibody (ab105738) at 1/1000 dilution

**Lane 1 :** Recombinant MBP-GDF15 fusion protein purified from E.coli

**Lane 2 :** Yeast cell lysate expressing SUMO-Mouse GDF15

**Lane 3 :** Human GDF15 monomer purified from CHO-K1 cells

### Secondary

**All lanes :** Goat-anti-Rabbit HRP at 1/40000 dilution

Performed under reducing conditions.

**Predicted band size:** 33 kDa

Expect bands in Western blots of approximately 14 and 28 kDa in size corresponding to GDF15 monomer and dimer, respectively.

**Please note:** All products are "FOR RESEARCH USE ONLY. NOT FOR USE IN DIAGNOSTIC PROCEDURES"

## Our Abpromise to you: Quality guaranteed and expert technical support

- Replacement or refund for products not performing as stated on the datasheet
- Valid for 12 months from date of delivery
- Response to your inquiry within 24 hours

- We provide support in Chinese, English, French, German, Japanese and Spanish
- Extensive multi-media technical resources to help you
- We investigate all quality concerns to ensure our products perform to the highest standards

If the product does not perform as described on this datasheet, we will offer a refund or replacement. For full details of the Abpromise, please visit <https://www.abcam.co.jp/abpromise> or contact our technical team.

#### **Terms and conditions**

---

- Guarantee only valid for products bought direct from Abcam or one of our authorized distributors