

### Anti-GCN2 (phospho T667) antibody [EPR2319Y] ab68427

リコンビナント RabMAb

#### 1 References [画像数 3](#)

#### 製品の概要

製品名	Anti-GCN2 (phospho T667) antibody [EPR2319Y]
製品の詳細	Rabbit monoclonal [EPR2319Y] to GCN2 (phospho T667)
由来種	Rabbit
アプリケーション	<b>適用あり:</b> WB, IP <b>適用なし:</b> Flow Cyt, ICC/IF or IHC-P
種交差性	<b>交差種:</b> Human
免疫原	Synthetic peptide. This information is proprietary to Abcam and/or its suppliers.
ポジティブ・コントロール	WB: HeLa cells IP: HeLa cell lysate.
特記事項	<p>This product is a recombinant monoclonal antibody, which offers several advantages including:</p> <ul style="list-style-type: none"><li>- High batch-to-batch consistency and reproducibility</li><li>- Improved sensitivity and specificity</li><li>- Long-term security of supply</li><li>- Animal-free production</li></ul> <p>For more information <a href="#">see here</a>.</p> <p>Our RabMAb<sup>®</sup> technology is a patented hybridoma-based technology for making rabbit monoclonal antibodies. For details on our patents, please refer to <a href="#">RabMAb<sup>®</sup> patents</a>.</p> <p>Mouse, Rat: We have preliminary internal testing data to indicate this antibody may not react with these species. Please contact us for more information.</p>

#### 製品の特性

製品の状態	Liquid
保存方法	Shipped at 4°C. Store at -20°C. Stable for 12 months at -20°C.
バッファー	pH: 7.20 Preservative: 0.05% Sodium azide Constituents: 40% Glycerol (glycerin, glycerine), 9.85% Tris glycine, 50% Tissue culture supernatant
精製度	Protein A purified
ポリ/モノ	モノクローナル

クローン名 EPR2319Y  
アイソタイプ IgG

#### アプリケーション

**The Abpromise guarantee** **Abpromise保証は、次のテスト済みアプリケーションにおけるab68427の使用に適用されず**  
アプリケーションノートには、推奨の開始希釈率がありますが、適切な希釈率につきましてはご検討ください。

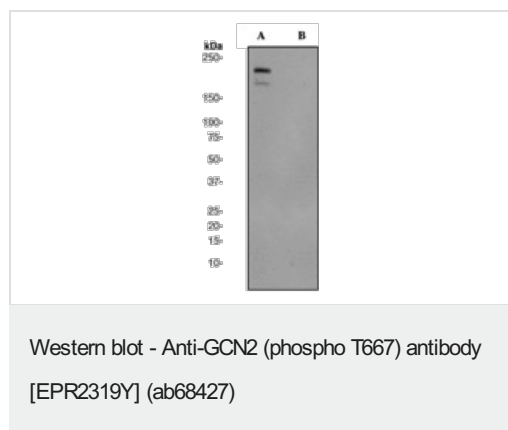
アプリケーション	Abreviews	特記事項
WB		1/1000 - 1/2000. Detects a band of approximately 220 kDa (predicted molecular weight: 220 kDa).
IP		1/30.

**追加情報** Is unsuitable for Flow Cyt, ICC/IF or IHC-P.

#### ターゲット情報

**機能** Can phosphorylate the alpha subunit of EIF2 and may mediate translational control.  
**組織特異性** Widely expressed.  
**配列類似性** Belongs to the protein kinase superfamily. Ser/Thr protein kinase family. GCN2 subfamily. Contains 2 protein kinase domains. Contains 1 RWD domain.  
**ドメイン** Kinase domain 1 is a degenerate kinase domain. RWD domain is reported to interact with GCN1L1.  
**翻訳後修飾** Autophosphorylated on threonine residues.

#### 画像



**All lanes** : Anti-GCN2 (phospho T667) antibody [EPR2319Y] (ab68427) at 1/2000 dilution

**Lane 1** : HeLa cell lysate - untreated

**Lane 2** : HeLa cell lysate - treated with LP

Lysates/proteins at 10 µg per lane.

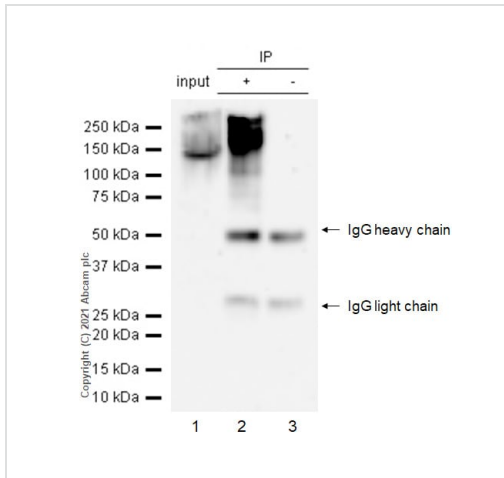
#### Secondary

**All lanes** : HRP labelled Goat anti-Rabbit antibody at 1/2000 dilution

**Predicted band size:** 220 kDa

**Observed band size:** 220 kDa

**Additional bands at:** 180 kDa. We are unsure as to the identity of these extra bands.



Immunoprecipitation - Anti-GCN2 (phospho T667)  
antibody [EPR2319Y] (ab68427)

GCN2 was immunoprecipitated from 0.35 mg HeLa (Human cervix adenocarcinoma epithelial cell) whole cell lysate 10 µg with ab68427 at 1/50 dilution (2µg). VeriBlot for IP Detection Reagent (HRP)([ab131366](#)) was used at 1/5000 dilution.





**Lane 1:** HeLa (Human cervix adenocarcinoma epithelial cell) whole cell lysate 10 µg

**Lane 2:** ab68427 IP in HeLa whole cell lysate

**Lane 3:** Rabbit monoclonal IgG ([ab172730](#)) instead of ab68427 in HeLa whole cell lysate

Blocking and dilution buffer and concentration: 5% NFDN/TBST.

Why choose a recombinant antibody?

- **Research with confidence**  
Consistent and reproducible results
- **Long-term and scalable supply**  
Recombinant technology
- **Success from the first experiment**  
Confirmed specificity
- **Ethical standards compliant**  
Animal-free production

Anti-GCN2 (phospho T667) antibody [EPR2319Y] (ab68427)

**Please note:** All products are "FOR RESEARCH USE ONLY. NOT FOR USE IN DIAGNOSTIC PROCEDURES"

### Our Promise to you: Quality guaranteed and expert technical support

- Replacement or refund for products not performing as stated on the datasheet
- Valid for 12 months from date of delivery
- Response to your inquiry within 24 hours
- We provide support in Chinese, English, French, German, Japanese and Spanish
- Extensive multi-media technical resources to help you
- We investigate all quality concerns to ensure our products perform to the highest standards

If the product does not perform as described on this datasheet, we will offer a refund or replacement. For full details of the Abpromise, please visit <https://www.abcam.co.jp/abpromise> or contact our technical team.

### **Terms and conditions**

---

- Guarantee only valid for products bought direct from Abcam or one of our authorized distributors