

Anti-GC1q R antibody ab101267

1 References [画像数 3](#)

製品の概要

製品名	Anti-GC1q R antibody
製品の詳細	Rabbit polyclonal to GC1q R
由来種	Rabbit
アプリケーション	適用あり: WB, IP, IHC-P
種交差性	交差種: Mouse, Human 交差が予測される動物種: Horse, Chimpanzee, Gorilla, Orangutan, Bat 
免疫原	Immunogen corresponds to a region within amino acids 150-200 of Human GC1q R (NP_001203.1)
特記事項	<p>The Life Science industry has been in the grips of a reproducibility crisis for a number of years. Abcam is leading the way in addressing this with our range of recombinant monoclonal antibodies and knockout edited cell lines for gold-standard validation. Please check that this product meets your needs before purchasing.</p> <p>If you have any questions, special requirements or concerns, please send us an inquiry and/or contact our Support team ahead of purchase. Recommended alternatives for this product can be found below, along with publications, customer reviews and Q&As</p>

製品の特性

製品の状態	Liquid
保存方法	Shipped at 4°C. Upon delivery aliquot and store at -20°C. Avoid freeze / thaw cycles.
バッファー	pH: 7 Preservative: 0.09% Sodium azide Constituent: Tris citrate/phosphate
精製度	Immunogen affinity purified
ポリ/モノ	ポリクローナル
アイソタイプ	IgG

アプリケーション

The Abpromise guarantee

Abpromise保証は、次のテスト済みアプリケーションにおけるab101267の使用に適用されます

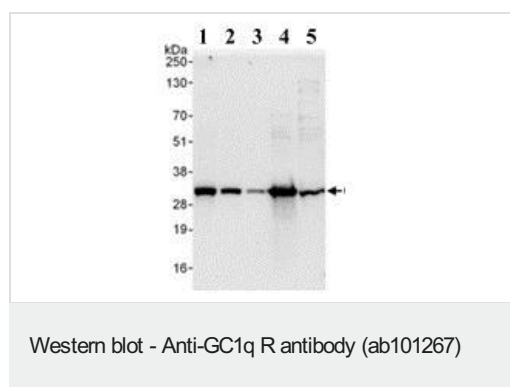
アプリケーションノートには、推奨の開始希釈率がありますが、適切な希釈率につきましてはご確認ください。

アプリケーション	Abreviews	特記事項
WB		1/2000 - 1/10000. Predicted molecular weight: 31 kDa.
IP		Use at 2-5 µg/mg of lysate.
IHC-P		1/500 - 1/2000. Perform heat mediated antigen retrieval with citrate buffer pH 6 before commencing with IHC staining protocol.

ターゲット情報

機能	Binds to the globular "heads" of C1q thus inhibiting C1 activation.
配列類似性	Belongs to the MAM33 family.
細胞内局在	Mitochondrion matrix. Nucleus. Might also be nuclear in some cell types.

画像



All lanes : Anti-GC1q R antibody (ab101267) at 0.1 µg/ml

Lane 1 : HeLa whole cell lysate at 50 µg/ml

Lane 2 : HeLa whole cell lysate at 15 µg/ml

Lane 3 : HeLa whole cell lysate at 5 µg/ml

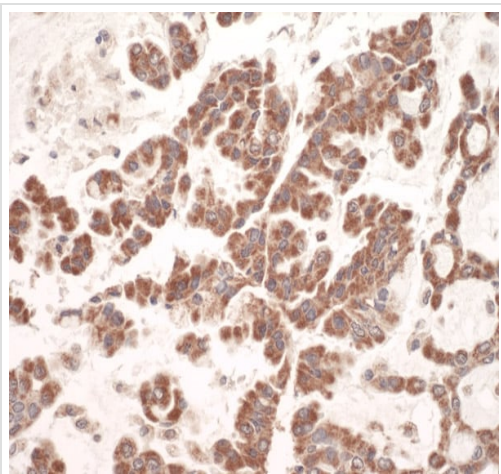
Lane 4 : 293T whole cell lysate at 50 µg/ml

Lane 5 : NIH3T3 whole cell lysate at 50 µg/ml

Developed using the ECL technique.

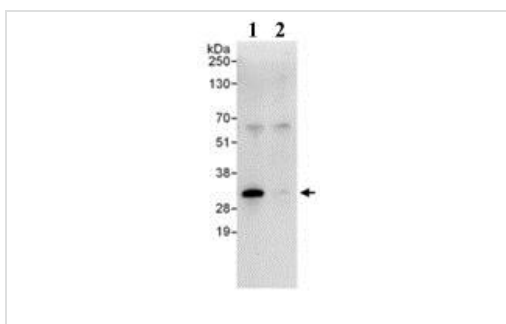
Predicted band size: 31 kDa

Exposure time: 30 seconds



Immunohistochemistry (Formalin/PFA-fixed paraffin-embedded sections) - Anti-GC1q R antibody (ab101267)

Immunohistochemistry (Formalin/PFA-fixed paraffin-embedded sections) analysis of human lung carcinoma tissue labelling GC1q R with ab101267 at 1/1000 (1µg/ml).



Immunoprecipitation - Anti-GC1q R antibody (ab101267)

Detection of Human GC1q R in 1mg HeLa whole cell lysate (20% of IP loaded) using ab101267 at 3µg/mg of lysate. Further Western Blot detection was performed using ab101267 at 0.4µg/ml.
Lane 1: ab101267 IP.
Lane 2: control IgG IP.

Please note: All products are "FOR RESEARCH USE ONLY. NOT FOR USE IN DIAGNOSTIC PROCEDURES"

Our Abpromise to you: Quality guaranteed and expert technical support

- Replacement or refund for products not performing as stated on the datasheet
- Valid for 12 months from date of delivery

- Response to your inquiry within 24 hours
- We provide support in Chinese, English, French, German, Japanese and Spanish
- Extensive multi-media technical resources to help you
- We investigate all quality concerns to ensure our products perform to the highest standards

If the product does not perform as described on this datasheet, we will offer a refund or replacement. For full details of the Abpromise, please visit <https://www.abcam.co.jp/abpromise> or contact our technical team.

Terms and conditions

- Guarantee only valid for products bought direct from Abcam or one of our authorized distributors