




Anti-Gbx2 antibody ab109726

★☆☆☆☆ [1 Abreviews](#) [1 References](#) [画像数 3](#)

製品の概要

製品名	Anti-Gbx2 antibody
製品の詳細	Goat polyclonal to Gbx2
由来種	Goat
アプリケーション	適用あり: ELISA, WB, IHC-P
種交差性	交差種: Human 交差が予測される動物種: Mouse, Cow, Dog, Pig 
免疫原	Synthetic peptide: C-QGKDESKVEDDPK , corresponding to internal sequence amino acids 181-193 of Human Gbx2. <div>  Run BLAST with  Run BLAST with </div>
ポジティブ・コントロール	Jurkat cell lysate, Human brain (cortex) and Human placenta tissues
特記事項	<p>The Life Science industry has been in the grips of a reproducibility crisis for a number of years. Abcam is leading the way in addressing this with our range of recombinant monoclonal antibodies and knockout edited cell lines for gold-standard validation. Please check that this product meets your needs before purchasing.</p> <p>If you have any questions, special requirements or concerns, please send us an inquiry and/or contact our Support team ahead of purchase. Recommended alternatives for this product can be found below, along with publications, customer reviews and Q&As</p>

製品の特性

製品の状態	Liquid
保存方法	Shipped at 4°C. Upon delivery aliquot and store at -20°C. Avoid freeze / thaw cycles.
バッファー	pH: 7.30 Preservative: 0.02% Sodium azide Constituents: Tris buffered saline, 0.5% BSA
精製度	Immunogen affinity purified
ポリ/モノ	ポリクローナル
アイソタイプ	IgG

アプリケーション

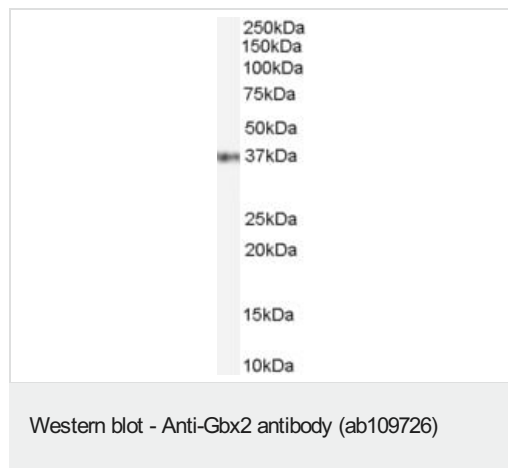
The Abpromise guarantee **Abpromise保証は、** 次のテスト済みアプリケーションにおけるab109726の使用に適用されます
アプリケーションノートには、推奨の開始希釈率がありますが、適切な希釈率につきましてはご検討ください。

アプリケーション	Abreviews	特記事項
ELISA		Use at an assay dependent concentration.
WB		Use a concentration of 0.1 - 0.3 µg/ml. Predicted molecular weight: 37 kDa.
IHC-P		Use a concentration of 3.75 µg/ml.

ターゲット情報

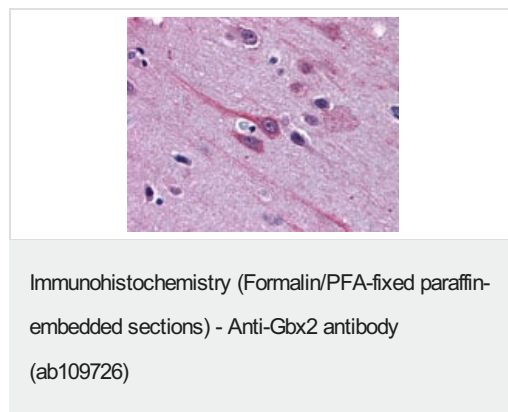
機能	May act as a transcription factor for cell pluripotency and differentiation in the embryo.
配列類似性	Contains 1 homeobox DNA-binding domain.
細胞内局在	Nucleus.

画像

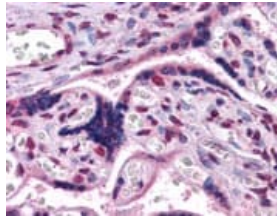


Anti-Gbx2 antibody (ab109726) at 0.1 µg/ml + Jurkat cell lysate (in RIPA buffer) at 35 µg

Predicted band size: 37 kDa



Human Brain, cortex: Formalin-Fixed, Paraffin-Embedded (FFPE) using ab109726 at a concentration of 3.75 µg/ml.



Human Placenta: Formalin-Fixed, Paraffin-Embedded (FFPE)
using ab109726 at a concentration of 3.75 µg/ml.

Immunohistochemistry (Formalin/PFA-fixed paraffin-
embedded sections) - Anti-Gbx2 antibody
(ab109726)

Please note: All products are "FOR RESEARCH USE ONLY. NOT FOR USE IN DIAGNOSTIC PROCEDURES"

Our Abpromise to you: Quality guaranteed and expert technical support

- Replacement or refund for products not performing as stated on the datasheet
- Valid for 12 months from date of delivery
- Response to your inquiry within 24 hours
- We provide support in Chinese, English, French, German, Japanese and Spanish
- Extensive multi-media technical resources to help you
- We investigate all quality concerns to ensure our products perform to the highest standards

If the product does not perform as described on this datasheet, we will offer a refund or replacement. For full details of the Abpromise, please visit <https://www.abcam.co.jp/abpromise> or contact our technical team.

Terms and conditions

- Guarantee only valid for products bought direct from Abcam or one of our authorized distributors