


Anti-GATAD2B antibody ab76924

[2 References](#) [画像数 3](#)

製品の概要

製品名	Anti-GATAD2B antibody
製品の詳細	Rabbit polyclonal to GATAD2B
由来種	Rabbit
アプリケーション	適用あり: WB, IP
種交差性	交差種: Mouse, Human 交差が予測される動物種: Rat, Rabbit, Horse, Guinea pig, Cow, Dog, Pig, Chimpanzee, Rhesus monkey, Gorilla, Chinese hamster, Elephant 
免疫原	Synthetic peptide corresponding to Human GATAD2B aa 1-50 (N terminal). Database link: NP_065750.1
ポジティブ・コントロール	WB: HeLa, 293T and CT26-WT whole cell lysates. IP: HeLa whole cell lysate.
特記事項	<p>The Life Science industry has been in the grips of a reproducibility crisis for a number of years. Abcam is leading the way in addressing this with our range of recombinant monoclonal antibodies and knockout edited cell lines for gold-standard validation. Please check that this product meets your needs before purchasing.</p> <p>If you have any questions, special requirements or concerns, please send us an inquiry and/or contact our Support team ahead of purchase. Recommended alternatives for this product can be found below, along with publications, customer reviews and Q&As</p>

製品の特性

製品の状態	Liquid
保存方法	Shipped at 4°C. Upon delivery aliquot and store at -20°C. Avoid freeze / thaw cycles.
バッファー	pH: 6.8 Preservative: 0.09% Sodium azide Constituents: 0.1% BSA, Tris buffered saline
精製度	Immunogen affinity purified
ポリ/モノ	ポリクローナル
アイソタイプ	IgG

アプリケーション

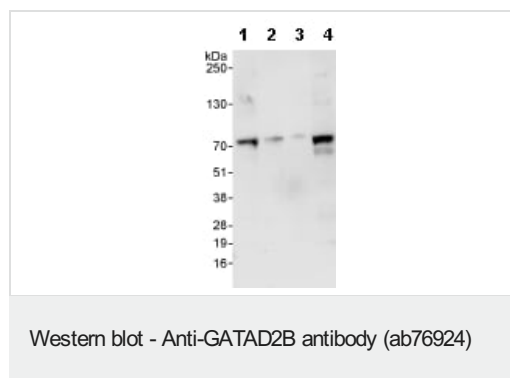
The Abpromise guarantee **Abpromise保証は、次のテスト済みアプリケーションにおけるab76924の使用に適用されず**
アプリケーションノートには、推奨の開始希釈率がありますが、適切な希釈率につきましてはご検討ください。

アプリケーション	Abreviews	特記事項
WB		1/2000 - 1/10000. Predicted molecular weight: 66 kDa.
IP		Use at 2-5 µg/mg of lysate.

ターゲット情報

機能	Has transcriptional repressor activity. Targets MBD3 to discrete loci in the nucleus.
組織特異性	Ubiquitous.
配列類似性	Contains 1 GATA-type zinc finger.
ドメイン	CR1 is required for interaction with MBD3 and transcription repression. CR2 is required for localization to discrete loci in the nucleus.
細胞内局在	Nucleus. Nuclear, in discrete foci.

画像



All lanes : Anti-GATAD2B antibody (ab76924) at 0.04 µg/ml

Lane 1 : HeLa whole cell lysate at 50 µg

Lane 2 : HeLa whole cell lysate at 15 µg

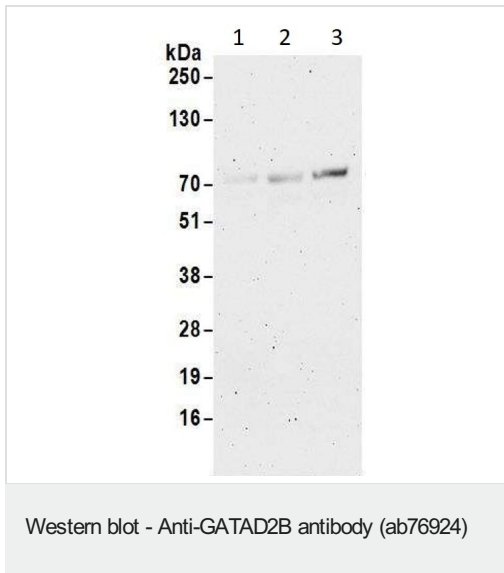
Lane 3 : HeLa whole cell lysate at 5 µg

Lane 4 : 293T whole cell lysate at 50 µg

Predicted band size: 66 kDa

Observed band size: 71 kDa

Exposure time: 30 seconds



All lanes : Anti-GATAD2B antibody (ab76924) at 1/2000 dilution

Lane 1 : NIH 3T3 (Mouse embryonic fibroblasts) whole cell lysate

Lane 2 : TCMK-1 (Transformed C3H Mouse Kidney-1) whole cell lysate

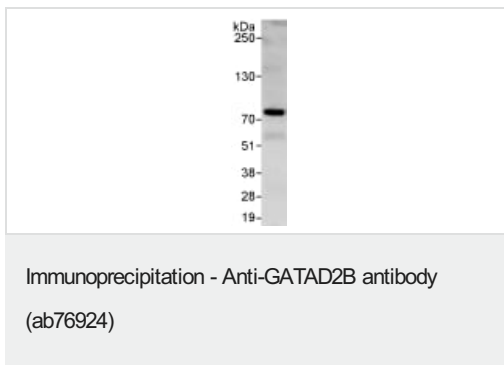
Lane 3 : CT26-WT (Mouse colon carcinoma cell - Wild Type) whole cell lysate

Lysates/proteins at 50 µg per lane.

Predicted band size: 66 kDa

Observed band size: 72 kDa

Exposure time: 3 minutes



Detection of GATAD2B by Western Blot of Immunoprecipitate.

ab76924 at 1µg/ml staining GATAD2B in HeLa whole cell lysate immunoprecipitated using ab76924 at 3µg/mg lysate (1 mg/IP; 20% of IP loaded/lane).

Detection: Chemiluminescence with exposure time of 30 seconds.

Please note: All products are "FOR RESEARCH USE ONLY. NOT FOR USE IN DIAGNOSTIC PROCEDURES"

Our Abpromise to you: Quality guaranteed and expert technical support

- Replacement or refund for products not performing as stated on the datasheet
- Valid for 12 months from date of delivery
- Response to your inquiry within 24 hours
- We provide support in Chinese, English, French, German, Japanese and Spanish

- Extensive multi-media technical resources to help you
- We investigate all quality concerns to ensure our products perform to the highest standards

If the product does not perform as described on this datasheet, we will offer a refund or replacement. For full details of the Abpromise, please visit <https://www.abcam.co.jp/abpromise> or contact our technical team.

Terms and conditions

- Guarantee only valid for products bought direct from Abcam or one of our authorized distributors